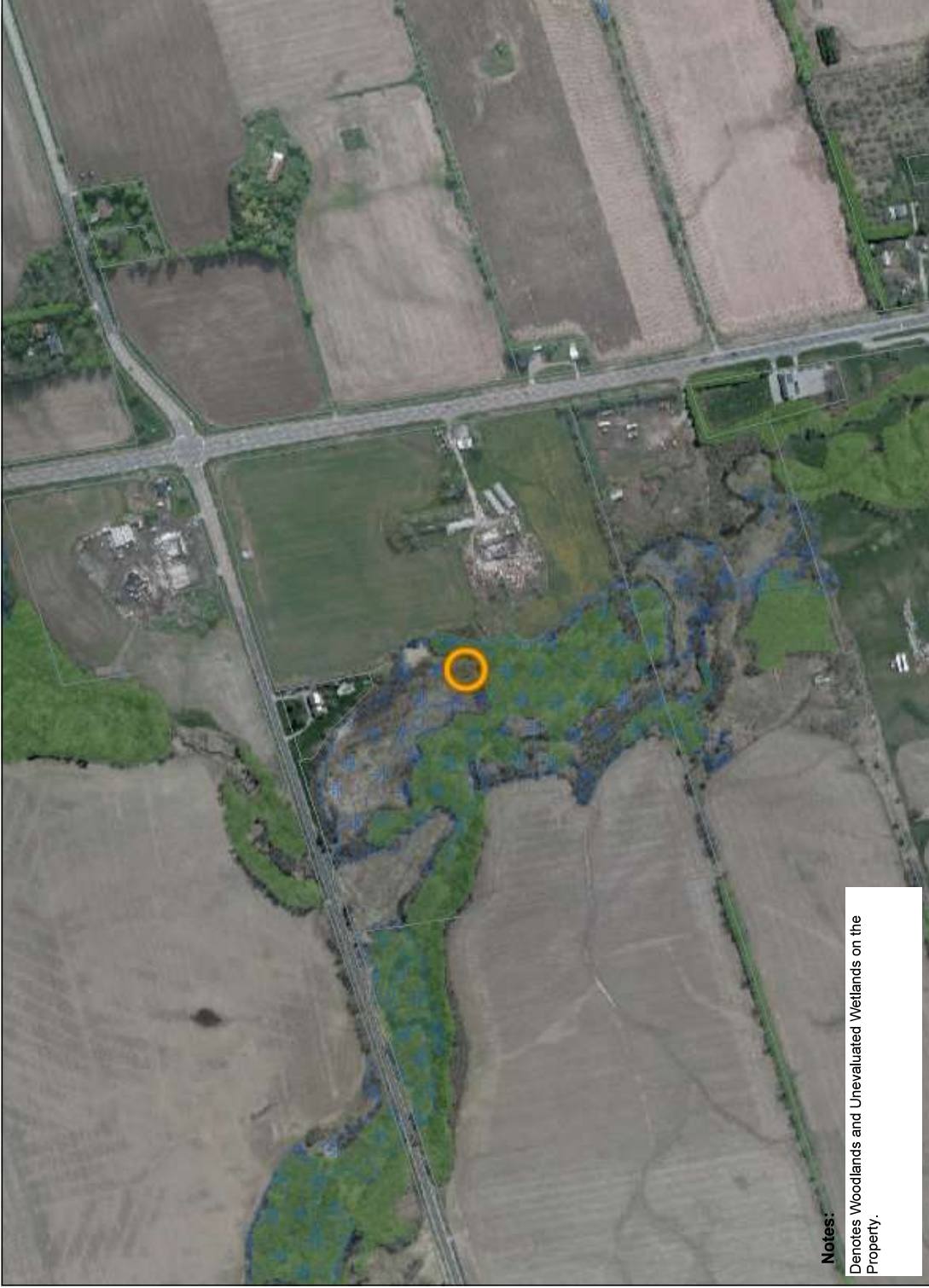


**MNRF Mapping**

Map created: 12/2/2022



**Notes:**  
Denotes Wetlands and Unevaluated Wetlands on the Property.

**Legend**

- Assessment Parcel
- Evaluated Wetland
- Provincially Significant/considérée d'importance provinciale
- Non-Provincially Significant/ntion considérée d'importance provinciale
- Unevaluated Wetland
- Woodland



0.3 Kilometres 0 0.17 0.3  
Absence of a feature in the map does not mean they do not exist in this area.



This map should not be relied on as a precise indicator of routes or locations, nor as a guide to navigation. The Ontario Ministry of Natural Resources and Forestry (OMNRF) shall not be liable in any way for the use of, or reliance upon, this map or any information on this map.  
© Copyright for Ontario Parcel data is held by King's Printer for Ontario and its licensors and may not be reproduced without permission. THIS IS NOT A PLAN OF SURVEY.  
Imagery Copyright Notices: DRAPE © Aéro-Photo (1961) Inc., 2008 - 2009  
GTA 2005 / SWOOP 2006 / Simcoe-Muskoka-Dufferin © FirstBase Solutions, 2005 / 2006 / 2008  
© King's Printer for Ontario, 2022