

MAPPING ERROR

Greenbelt Plan, Oak Ridges Moraine Conservation Plan




Maps are for Consultation Purposes Only

Proposed Modifications Map 10

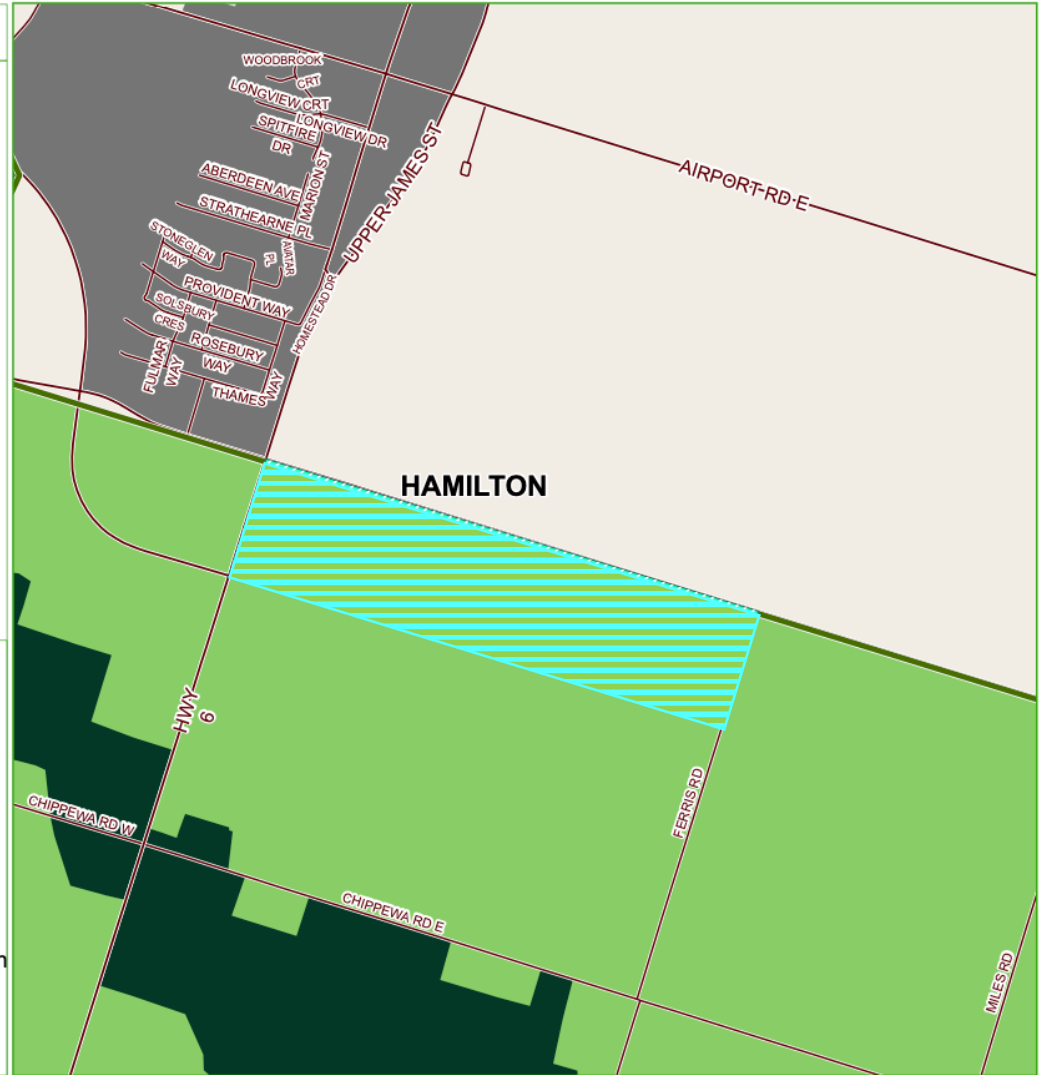
LEGEND

Ontario 

-  Greenbelt Area*
-  Protected Countryside
-  Natural Heritage System
-  Towns/Villages
-  Urban River Valleys
-  Settlement Areas Outside the Greenbelt
-  Municipal Boundary
-  Road or Highway

- Proposed Modifications
-  Greenbelt Redesignation
 -  Greenbelt Removal
 -  ORM Redesignation

0 0.13 0.25 0.5 Km
1 cm equals 178 m



Note: While every effort has been made to accurately depict the information, this map should not be relied on as being a precise indicator of locations of features or roads. For precise boundaries and locations of Settlement Areas, including Towns/Villages and Hamlets, the appropriate municipalities should be consulted.

Produced by and using data sources from the: Ministry of Municipal Affairs and Housing; Ministry of Northern Development, Mines, Natural Resources and Forestry; Ministry of the Environment, Conservation and Parks; and, the Ministry of Agriculture, Food and Rural Affairs.

<https://www.ontario.ca/page/accessible-customer-service-policy>
We are committed to providing accessible customer service. On request, we can arrange for accessible formats and communications supports. Please contact MMAH by email (mininfo@ontario.ca) for regulation details.

*Ontario Regulation 59/05, as amended. © 2022, King's Printer for Ontario

CORRECT MAPPING PER DESCRIPTION OF REGULATIONS

Greenbelt Plan, Oak Ridges Moraine Conservation Plan




Maps are for Consultation Purposes Only

Proposed Modifications Map 10

LEGEND

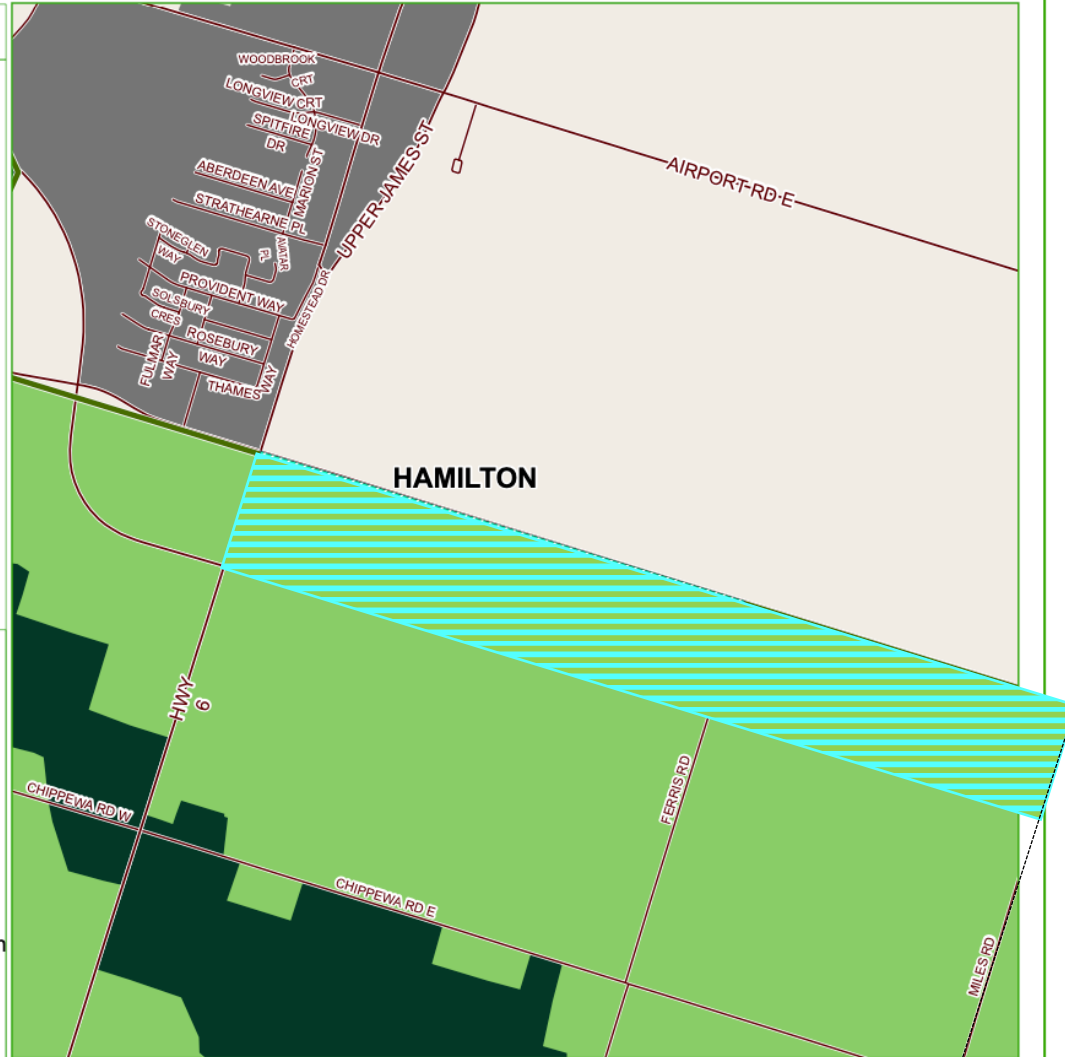
Ontario 

-  Greenbelt Area*
-  Protected Countryside
-  Natural Heritage System
-  Towns/Villages
-  Urban River Valleys
-  Settlement Areas Outside the Greenbelt
-  Municipal Boundary
-  Road or Highway

- Proposed Modifications
-  Greenbelt Redesignation
 -  Greenbelt Removal
 -  ORM Redesignation

0 0.13 0.25 0.5 Km
1 cm equals 178 m

 Map North: 0°



Note: While every effort has been made to accurately depict the information, this map should not be relied on as being a precise indicator of locations of features or roads. For precise boundaries and locations of Settlement Areas, including Towns/Villages and Hamlets, the appropriate municipalities should be consulted.

Produced by and using data sources from the: Ministry of Municipal Affairs and Housing; Ministry of Northern Development, Mines, Natural Resources and Forestry; Ministry of the Environment, Conservation and Parks; and, the Ministry of Agriculture, Food and Rural Affairs.

<https://www.ontario.ca/page/accessible-customer-service-policy>
We are committed to providing accessible customer service. On request, we can arrange for accessible formats and communications supports. Please contact MMAH by email (mininfo@ontario.ca) for regulation details.

*Ontario Regulation 59/05, as amended. © 2022, King's Printer for Ontario