

Forestry Day Tour

October 17, 2019

In Support of the
City of Temiskaming Shores
Community Economic
Development Strategic Plan



Discover a whole new Ontario • Découvrez un tout nouvel Ontario

Forestry Day Tour Advocates



Prepared by:



Forestry Day Tour Itinerary
October 17, 2019

TOUR DAY SUMMARY

- 7:45 am** - Participants meet in parking lot of *Temiskaming Shores* City Hall
- 8:00 am** - Departure from *Temiskaming Shores* City Hall. Travel to *EACOM Timber Corporation* harvest operations in Lundy Township
- 9:00 am** - **Stop 1:** Discussion and tour of *Resource Tech Management Inc.* (RTMI) harvest operations in Lundy Township
- 10:30 am** - **Stop 2:** Depart Lundy and travel to Gro-Bark facilities (Kenabeek)
- 11:15 am** - **Stop 3:** Depart Gro-Bark facilities and travel to Cane Township
- 11:45 am** - Depart Cane Township and travel to EACOM Sawmill facility in Elk Lake. *Lunch in transit*
- 12:15 pm** - **Stop 4:** EACOM Sawmill orientation and safety briefing followed by tour of sawmill facilities
- 2:15 pm** - Depart Elk Lake and travel to GP North Woods LP oriented strand board facilities in Englehart
- 2:45 pm** - **Stop 5:** GP North Woods LP Mill orientation and safety briefing followed by tour of OSB facilities
- 4:00 pm** - Depart Englehart and travel to Temiskaming Shores
- 4:45 pm** - Arrival at City Hall Temiskaming Shores

FORESTRY DAY TOUR OVERVIEW MAP



TOUR SITES

October 17, 2019

Introduction:

In early 2019, *Temiskaming Shores* began efforts to identify opportunities for municipal support of the forestry sector. Following discussions with representatives of this sector, the group extended an invitation to *Forest Ontario* to provide a presentation to municipal council to outline the importance of forestry in the province.

On May 7, 2019, Rob Keen of Forest Ontario made a presentation to Council about the impact of the forest industry on Ontario and this region. He advised that several hundred people work in the forest industry both in and around Temiskaming Shores and that the industry provides significant economic impact to the City.

As part of the recent City of Temiskaming Shores administrative report, the forest sector committee invited the city to work with and promote the local forest industry in order to demonstrate the benefits the industry brings to the Temiskaming area. It was proposed that elected officials participate in a Forestry Day Tour in order to better understand the economic impact of the forest industry in our region. It is expected that this will assist Council so that they can help provide a higher level of advocacy on forest industries behalf when dealing with Ministry representatives from other levels of government.

The itinerary has been prepared to encourage open discussions between all participants as the various aspects of the forest management process are demonstrated.

The group is encouraged to ask questions and learn why forestry has been acknowledged as a priority sector for our community. Enjoy your day!



Directions: Depart from Temiskaming Shores City Hall. Proceed on *Lakeshore Road* and *Hwy 65* west to *Henwood Twp. Road 3* for 43 km. Proceed on *Henwood Twp. Road 3* and *Lundy Road* for 9 km to harvest block *Lundy 122*. (Approximate travel time - **56 min**)

Stop 1: Lundy Township Field Visit

As part of our forestry tour, the group will visit two local forests that have a direct link to local resources within the organized municipalities of Temiskaming Shores (New Liskeard, Haileybury and Dymond), Cobalt, Temagami, Latchford, Harris, Hudson, James and Coleman.

The Temagami Management Unit (TMU) is within the North Bay administrative district of the Ontario Ministry of Natural Resources and Forestry (MNR). The Temagami Management Unit is situated north of North Bay and south of Elk Lake. It is bounded by Lake Timiskaming to the east, the Sudbury Forest to the west, the Timiskaming Forest to the north, and the Nipissing Forest to the south. The Temagami Crown MU remains as the only Crown Management Unit in the province that has never been converted to a Sustainable Forest License (SFL). However, 2016-17 represents the first year in which most forest management functions will be carried out by a third party under contract with the MNR. Currently, there are discussions underway with the intention of establishing a second A Local Forest Management Corporation (LFMC) in the Temagami area. An LFMC is a financially self-sustaining Crown agency that will hold a sustainable forest license and manage forests sustainably.



Source: <https://www.temagamiforest.com/> and <http://www.foresttenuremodernization.ripplegroup.ca/cms/modernization-plan-implementation.asp>

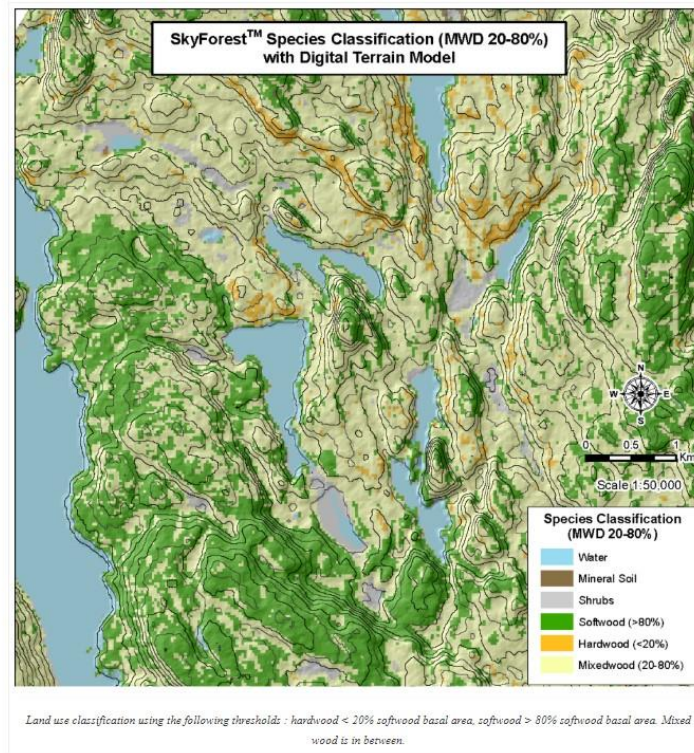
About First Resource Management Group Inc.

First Resource Management Group Inc. is a contract resource management company that provides forest management services on behalf of forest tenure holders for sustainable benefits and use. Currently they manage forests in Ontario, Canada. FRMG launched the company with a view to establishing a new model for providing professional forestry services. They are a growth-oriented company that serve tenure holders across Canada, on both private and public land. The company employs more than 30 staff working from offices located in New Liskeard, Kirkland Lake, Port Credit, North Bay and Hornepayne.



They are experts at monitoring and assessing forest management outcomes. Traditional forest-industry tenure holders have benefited from their planning expertise through improved harvest opportunities and reduced delivered wood costs. Currently they have contracts to provide sustainable forest management services on 9 million hectares of crown woodlands in Northeastern Ontario on behalf of forest industry Sustainable Forest Licence Holders (SFL). Responsibilities on behalf of their SFL clients include forest management planning, geographic information system services, silvicultural and monitoring services. FRMG has developed SkyForest™ which is a patented new remote sensing technology developed jointly by First Resource Management Group Inc. and Professor Benoît St-Onge, Ph.D. of the Université du Québec à Montréal.

FRMG is also a partner in Forest Carbon Alliance Inc., a company that develops and sells carbon credits from afforestation of inactive farmland.



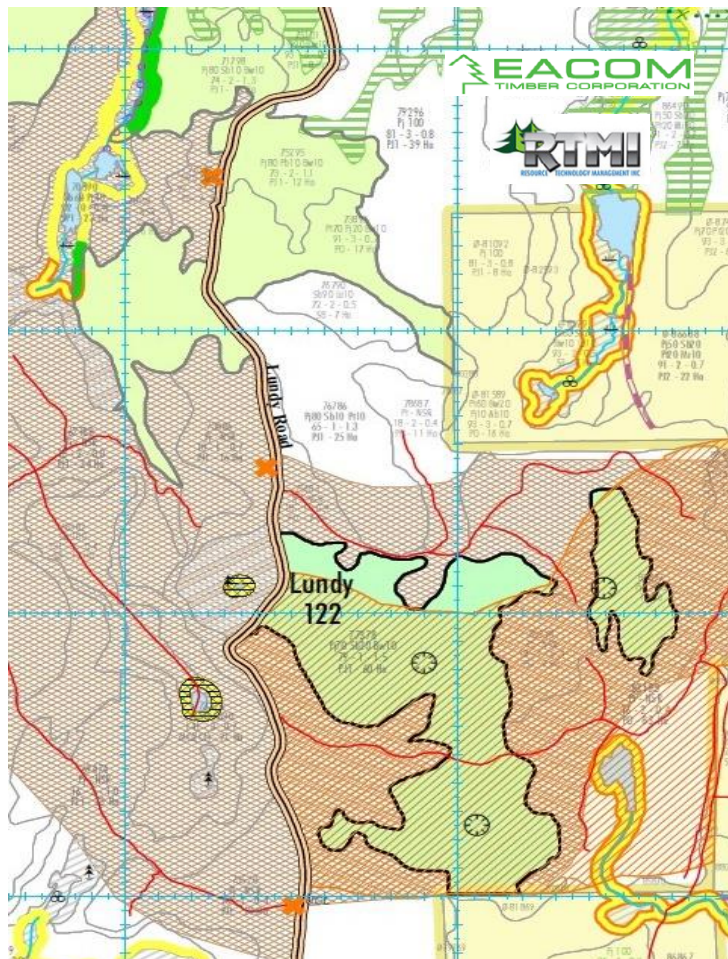
Source: <https://frmginc.com/>

About EACOM Timber Corporation

EACOM is a responsible forest manager adhering to the best sustainable forest management practices, respecting federal and provincial laws, and ensuring third-party certification of the forests it manages. EACOM holds several certifications that confirm responsible forest management through international certification and labelling systems, specifically the Forest Stewardship Council® (FSC®) and the Sustainable Forestry Initiative® (SFI®).

EACOM's customer base is in Eastern Canada and the North Eastern United States, and they strive to deliver excellent products from certified sustainable resources to them. A team of foresters and certification professionals ensure that the forest resource is responsibly managed and that forest practices maintain a balance of forest values, including water and soil quality, fish and wildlife habitat, and biodiversity, as well as community and recreational opportunities.

The harvest block we are visiting is currently under a Forest Resource Licence held by EACOM Timber Corporation on the Temagami Management Unit during the 2019-20 operating season. They have contracted Resource Tech Management Inc. (RTMI) to conduct harvest operations on their licence area.



About Resource Tech Management Inc. (RTMI)

Resource Tech Management Inc. (RTMI) is a privately-owned business based in Temiskaming Shores, Ontario. Owner, Allan Legros has worked in the forest industry for nearly 20 years, in progressively responsible roles with several major forestry companies. RTMI is a strong supporter of local initiatives, activities and economic development. Over the past two years, the company has donated both financially and in-kind to local charitable programs and organizations. The company is also a proud sponsor of local youth recreational teams and community events.



Over the past 5 years, RTMI has been one of the major timber harvesting contractors on the Timiskaming Forest. As a “stump-to-dump” operation, RTMI has the equipment and resources available to complete all aspects of this contract from the timber harvesting (i.e. “the stump”) to the hauling and delivery of logs to local mills (i.e. “the dump”). RTMI is a major supplier of Crown timber to EACOM Timber Corporation, harvesting over 25% the requirements for the Elk Lake mill on an annual basis and contributing to the needs of EACOM’s sawmills in Timmins, Ostrum and Nairn. During this period, the company has repeatedly displayed a high level of professionalism and has met or exceeded the required standards for health and safety and environmental work practices.

To this end, RTMI’s harvesting operations have been included in a number of environmental audits (i.e. including the Ontario Independent Forest Audit, Forest Stewardship Council, and Sustainable Forest Initiative). Most recently, the work practices of RTMI evaluated on the Timiskaming Forest as part of the 2017 certification system audits have contributed to the auditors’ conclusions that “RTMI has outstanding control over their operations”. Their understanding and implementation of existing legislation, regulations and guidelines has also been positively recognized by regulatory agencies when conducting these operations.

The company employs an average of 30 full time and contract employees and operators, many of whom reside in the Timiskaming Region. The company owns and operator its own harvesting equipment (timber processors, forwarders, log loaders, haul trucks and road construction equipment) rather than relying on subcontractors for its harvesting operations. In addition, RTMI periodically engages other local companies as the need and opportunity arises.

RTMI utilizes a “Cut-to-Length” (CTL) harvesting system, meaning that the equipment engaged harvests and processes the tree at the stump and does not create unsightly piles of slash (tops, branches) at the roadside. This system also minimizes environmental impact as the slash creates a layer of protection ground and therefore reduces soil compaction and minimizes the risk of erosion. Furthermore, by leaving the branches on site, cones are left in place and contribute to natural regeneration of conifer species.

Source: Material provided by Resource Tech Management Inc.



Directions: Depart from *Lundy 122*. Return to *Hwy 65* and proceed 300 m west to Gro-Bark. (Approximate travel time - **25 min**)

Stop 2: GRO-BARK (Walker Environmental, a division of Walker Industries)

Gro-Bark was started in 1980 by Jim McKague, when soilless mixes developed for the greenhouse industry, began to use bark as an ingredient to supplement peat moss use. For the next fifteen years, Jim's son Bill McKague refined bark product for use in potting mixes and commercial nurseries in Ontario. Simultaneously, a pine bark product for use as a landscape mulch was developed. By the mid-1990s, Gro-Bark was the leading producer of horticultural bark with its CPM® composted pine bark and SPM® shredded pine bark products. On December 7, 2017 Gro-Bark® became part of Walker Environmental, a division of Walker Industries. The addition of Gro-Bark® now makes Walker the largest fully integrated organics recovery company in Canada.

About Gro-Bark

Gro-Bark expanded into soil production in a bigger way in the mid 1990s when it began large scale composting of leaf/yard waste and built a custom soil blending plant at Milton. Commercial growers then had the opportunity to purchase custom blended soil recipes based on bark, peat, compost and other micro-ingredients such as perlite and fertilizer.



Gro-Bark's mulch business continued to grow through these years and production sites went from seasonally leased facilities to company owned properties around the province – strategically located to remove, store and process bark products from the by-products of the forestry industry.

In 2015, Gro-Bark built a world class custom soil blending facility at its flagship Caledon site. Supporting this facility are four additional composting sites, five additional mulch production sites and several aged bark reclamation sites. A large truck fleet links these sites together and to the most important addresses, which are their customers.

Gro-Bark® produces mulch and soil products almost entirely from feedstocks that would otherwise be considered waste. Bark mulch, aged bark and composted bark are produced using by-products from sawmills and forestry operations. Compost is produced from municipal collections of leaf and yard waste. Gro-Bark® soils, bark mulches and soil amendments range from high to very high on a scale of sustainability. The "Reduce, Reuse, Recycle" mantra is itself a range in sustainability with recycling being the most energy intensive of the three practices.

Gro-Bark® warrants that none of its woody substrates are harvested for mulch product - all materials are by-products. Several of our mulches are available with assurances that they come from sawmill wood that carries the world's leading Forest Stewardship Council "FSC®" accreditation. The scale of sustainability for our product list is largely based on the amount of fuel used to produce and then truck the materials to landscape sites.

Source: <https://www.gro-bark.com/post/this-is-gro-bark>



Aerial View – Gro-Bark (Kenabeek)



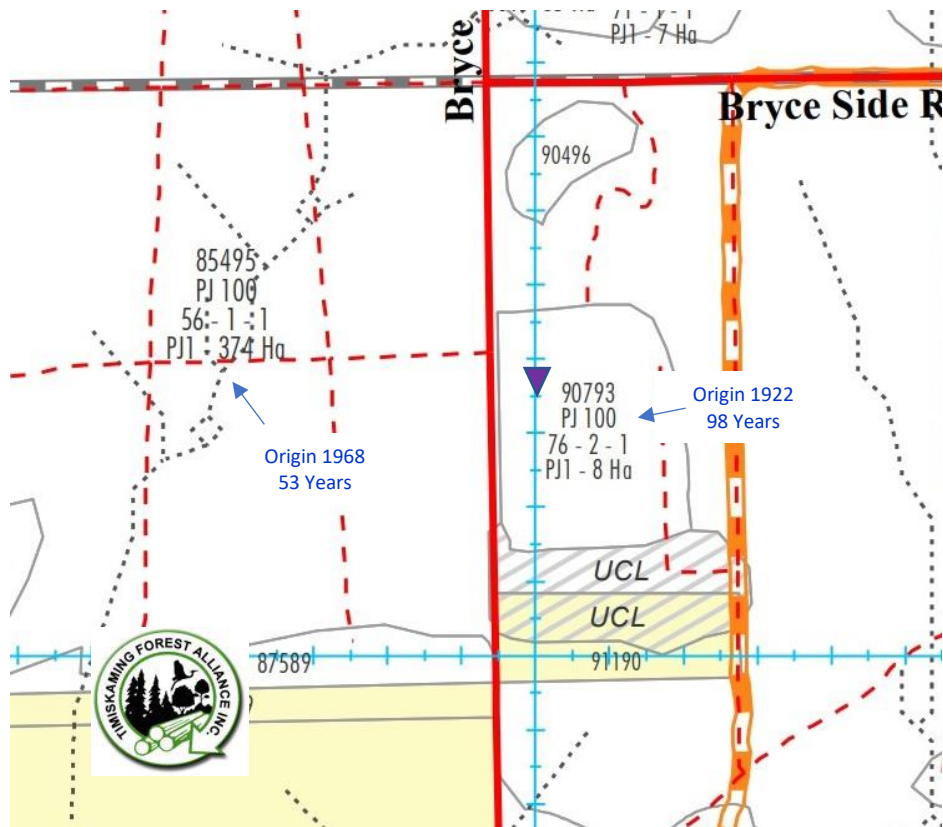
Directions: Depart from Gro-Bark (Kenabeek). Return to *Hwy 65* and proceed west for 7.6 km to *Cane Twp. Road 4*. Proceed north on *Cane Twp. Road 4* for 2.8 km (Approximate travel time - **10 min**)

Stop 3: Cane Township

About Timiskaming Forest Alliance Inc.

Cane township is located on the Timiskaming Forest. The Timiskaming Forest is an approximately 10,000 square kilometer forest land base that extends westward from the Ontario/Quebec border for 166 kilometers, and northward from Lake Timiskaming to Lake Abitibi. The Sustainable Forest Licence is held by a consortium of forest-based industry partners, ranging from small independent logging operators to large forest-products producers and managed by FRMG. On behalf of these partners, TFAI is responsible for the sustainable forest management of the Timiskaming Forest. Together they have assumed all forest management planning and operational responsibilities, including forest renewal and maintenance, on Crown land for the Timiskaming Forest. In support of the forest management efforts, TFAI plants between 5 to 6 million trees annually.

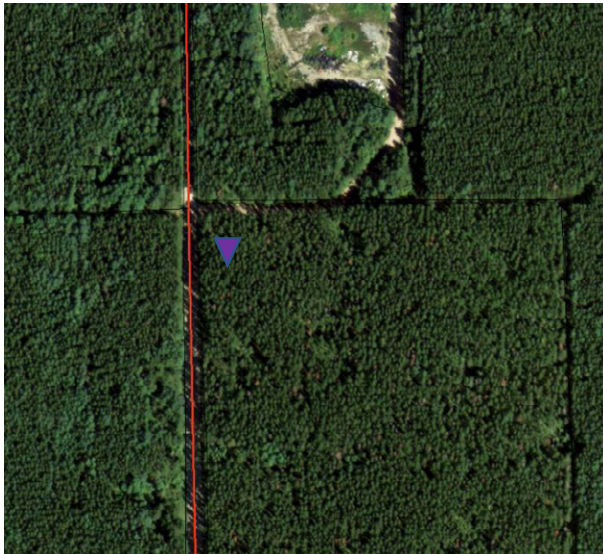
2007 Forest Resource Inventory



Historical Perspective

The Crown Forest Sustainability Act (CFSA), and one of its Regulations (160/04), directs the Minister of Natural Resources to conduct a review of each of the province's managed forests every five years to ensure that the licensee has complied with the terms and conditions of its licence, its forest management plan and other regulatory requirements. A detailed description of the scope and process of an IFA is set out in the Independent Forest Audit Process and Protocol (IFAPP), which contains approximately 150 individual audit procedures. The regulation stipulates that the audit is to assess the compliance of forest planning and operations with the CFSA, the Forest Management Planning Manual (FMPM), and applicable guides and regulations, and the compliance of the licensee with the Sustainable Forest Licence (SFL). An important note about context of the IFA's is that they review the performance of both the Licence holder and the MNRF related to forest management responsibilities covered by the audit. Evidence of sustainability by this audit includes site harvest, access renewal and maintenance activities carried out by forest managers

Aerial View – Cane Township



Stand #90793

**Jack Pine plantation
established in 1922**

Current age 98 years

The effectiveness of operations in meeting plan objectives, improvements made as a result of prior IFA results, are also assessed. The IFAPP also requires the audit team to provide a determination regarding the sustainability of forest management and whether the term of the SFL should be extended (the Regulation also includes the latter requirement). These audits have found that, overall, the quality of management of the Timiskaming Forest is very high.



Source: <https://www.timfor.com/> and <https://files.ontario.ca/environment-and-energy/forestry/audits/audits/Timiskaming%20Forest%202009%20IFA%20Final%20Report.pdf>

Directions: Depart from Cane Twp. Return to *Hwy 65* and proceed west for 24 km to *EACOM Sawmill Elk Lake via Pine Street* (Approximate travel time - **28 min**)

Stop 4: EACOM Timber Corporation

About EACOM

EACOM Timber Corporation is a major Eastern Canadian wood products company. Its operations include the manufacturing, marketing and distribution of lumber and wood-based value-added products, and the management of forest resources.

EACOM currently owns seven sawmills (5 in Ontario, 2 in Quebec), a remanufacturing facility (Quebec) and an engineered I-joists plant (Ontario) for a total of 1 100 employees. Many of these mills have a long, rich history having been part of their communities for over 100 years.

EACOM has a production capacity of approximately 900 million board feet of lumber and holds Crown logging rights of approximately 3.5 million cubic meters annually.

The Company is committed to investing in strong assets, including healthy forests, advanced technology and talented people.



EACOM produces wood studs primarily used in framing applications such as wall construction, including bearing wall applications. The lumber is available in a variety of grades from “appearance” (or “premium”) to economy, as well as machine stress rated (MSR) to ensure a minimum strength performance in engineered applications.

EACOM sawmills are managed according to rigorous standards ensuring the safety of their employees and the quality of products. Sawmills are primarily supplied by forests directly or indirectly managed by EACOM. All these forests are managed according to environmental standards and a large majority of these forests are third-party certified. Shipping is direct from sawmills or via reloads, by both truck and rail to ensure maximum efficiency.

Elk Lake Sawmill Visit

The Elk Lake site began operations in 1965 as a co-operative facility to dress lumber for Grant Lumber Co. Ltd. and Liskeard Lumber. At that time the facility was called Elk Lake Planing Mill Ltd and only the planer existed. The sawmill began operating in 1968. In 1995, E.B. Eddy Forest Products bought the Grant Lumber portion. E.B. Eddy was then purchased by Domtar Inc in 1998. EACOM Timber Corporation purchased Domtar portion in July 2010 and then purchased Liskeard Lumber’s portion in July 2011, making EACOM Timber Corporation the sole owner. Since 2012, EACOM has invested more than \$13 million at Elk Lake.

To reduce waste and maximize the amount of wood used from every tree harvested, EACOM has developed markets for its wood residues:

- Bark - All logs processed at EACOM's mills must first be "debarked" to ensure that the lumber and resulting chips produced are of the clean and of the highest quality. EACOM sells its bark so that it may be used in the mulch market for landscaping (Gro-Bark - Kenabeek) and in the production of green co-generation energy.
- Chips - By-products from the sawmilling process, including off-cuts, are chipped and sold as a resource to pulp and paper companies for the manufacture of products such as fine paper, tissue, and cardboard and paperboard. EACOM separates its species so they can provide Spruce, Pine, Balsam and mixed chips. Co-products include processing of trim-ends for finger-joint lumber products and biomass (KLFP-Kenogami and GP North Woods LP - Englehart), planer chips for biomass (RayonierAM - Témiscaming) and wood chips for groundwood mills (Domtar - Espanola and RayonierAM -Témiscaming).
- Shavings - EACOM sells the shavings produced as part of the planing process is sold to horse bedding market as well as for use in the production of panels (Leis Wood Products-Cobalt and G. McFeeter's - Burlington).
- Sawdust - The sawdust resulting from EACOM's sawmilling and planing processes is sold to a number of engineered wood products companies (Unibord- Val D'or and Panolam - Huntsville) for use in products such as particle board and medium density fibreboard (MDF).



In 2017, Elk Lake celebrated 50 years of operations. EACOM is one of the largest producers of softwood lumber in Canada and is one of the largest employers in the Temiskaming District with its sawmill in Elk Lake and operations on the Timiskaming and Temagami Forest. The mill employs approximately 150 full time individuals and contributes to the sustainability of several other local companies.

Group will meet at the mill office for company orientation and tour.

Source: <http://www.eacom.ca/>



Aerial View – EACOM Sawmill (Elk Lake)



Directions: Depart from *EACOM Sawmill Elk Lake*. Proceed east on Hwy 560 for 41 km to *GP North Woods LP OSB Mill Englehart* (Approximate travel time - **37 min**)

Stop 5: GP North Woods LP – OSB Mill Englehart

Headquartered at Atlanta, Georgia-Pacific is one of the world's leading manufacturers and marketers of building products, tissue, packaging, paper, cellulose and related chemicals. The company employs more than 40,000 people at more than 300 locations in North America, South America and Europe. Georgia-Pacific creates long-term value by using resources efficiently to provide innovative products and solutions that meet the needs of customers and society, while operating in a manner that is environmentally and socially responsible and economically sound.

About GP North Woods LP



The company has long been among the nation's leading manufacturers and suppliers of building products to lumber and building materials dealers and large do-it-yourself warehouse retailers, with brands such as Plytanium® plywood, DryPly® water repellent plywood, Ply-Bead® panels and Wood I Beam™ and XJ 85™ joists offered by Georgia-Pacific Wood Products LLC. DensArmor Plus® interior panels, DensGlass® Sheathing and ToughRock® drywall are offered by Georgia-Pacific Gypsum LLC. The familiar consumer tissue brands of Georgia-Pacific Consumer Products LP include Quilted Northern®, Angel Soft®, Brawny®, Sparkle®, Soft 'n Gentle®, Mardi Gras®, So-Dri® and Vanity Fair®. Dixie Consumer Products LLC, a Georgia-Pacific company, manufactures the Dixie® brand of tabletop products.

Englehart OSB Mill Visit

On May 26, 2010, Georgia-Pacific announced that it had completed the purchase of Grant Forest Products' oriented strand board (OSB) facility at Englehart, Ontario, as well as the associated facility at Earlton, Ontario.

Georgia-Pacific operates the OSB manufacturing facilities that employs more than 200 people in Ontario. Georgia-Pacific has made capital investments to improve facilities and deliver enhanced reliability and efficiencies.

Group will meet at the mill scale house for company orientation and tour.

Source: <https://www.gp.com/>



Aerial View – GP North Woods LP OSB Mill (Englehart)



Wrap up

Questions?

Comments?

Thank you for taking time out of your busy schedule.
We appreciate the time spent today and hope you have gained valuable insights into the forest industry!

Directions: Depart from GP North Woods LP OSB Mill Englehart. Proceed south on Hwy 11 and Lakeshore Road for 56 km to Temiskaming Shores City Hall.
(Approximate travel time - **47 min**)

Aerial View – Temiskaming Shore City Hall (Haileybury)

