

I GEOREFERENCED THIS CORNER BY COMING SOUTH PER P-3506-1 FROM THE 17-535 MCKEE SURVEY

P-3506-14 Shows these bars

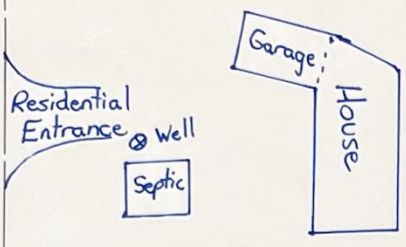
CONCESSION

*Retained

NO 01'15" W (P)

LOT 7

LOT 6



PART 3, PLAN 23R-2645 TRANSFER OF RIGHT-OF-WAY No. 100948

TRANSFER OF RIGHT-OF-WAY No. 57172

LOT 6 *Retained

CONCESSION 2

PARCEL 13733 D.K.F.

*Proposed Severance (4.55 Ha)

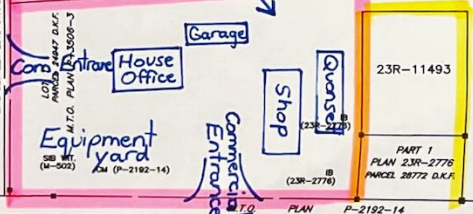
CONCESSION 2

PLAN 23R-2629 PART 3
 M.T.O. PLAN P-3506-5 PART 1
 M.T.O. PLAN P-3506-5 PART 2
 M.T.O. PLAN P-3506-5 PART 3
 M.T.O. PLAN P-3506-5 PART 4
 M.T.O. PLAN P-3506-5 PART 5
 M.T.O. PLAN P-3506-5 PART 6
 M.T.O. PLAN P-3506-5 PART 7
 M.T.O. PLAN P-3506-5 PART 8
 M.T.O. PLAN P-3506-5 PART 9
 M.T.O. PLAN P-3506-5 PART 10
 M.T.O. PLAN P-3506-5 PART 11
 M.T.O. PLAN P-3506-5 PART 12
 M.T.O. PLAN P-3506-5 PART 13
 M.T.O. PLAN P-3506-5 PART 14
 M.T.O. PLAN P-3506-5 PART 15
 M.T.O. PLAN P-3506-5 PART 16
 M.T.O. PLAN P-3506-5 PART 17
 M.T.O. PLAN P-3506-5 PART 18
 M.T.O. PLAN P-3506-5 PART 19
 M.T.O. PLAN P-3506-5 PART 20

PART 3, PLAN 23R-2629

LOT 7

PART 4, PLAN 23R-2629



*Retained

HIGHWAY No. 17

L.R.O. No. 47951

M.T.O. PLAN P-2192-3, L.R.O. No. 31256

M.T.O. PLAN P-2192-14

L.R.O. No. 47951

SOUTHWEST CORNER OF LOT 6, CONCESSION 2

SOUTHEAST CORNER OF LOT 6, CONCESSION 2

NO 16' W H

LINE BETWEEN LOTS 5 AND 6

P/L/ 231

PART 1, PLAN 23R-7045 TRANSFER OF EASEMENT No. 19208

SIB (23R-7045)

CM (P-2192-14)

SIB (23R-7045)

SIB (23R-7045)

SIB (23R-7045)