

**ST. MICHAEL'S HOSPITAL HELIPORT  
PRELIMINARY REFERENCE POINT INFORMATION**

POINT	NORTHING	EASTING
W1	4834749.595	630737.897
W2	4834714.322	630755.896
W3	4834429.801	630357.968
W4	4834386.058	630221.735
W5	4834549.025	630138.576
W6	4834404.615	629707.065
W7	4834082.079	629871.648
W8	4834332.481	630054.878
W9	4834346.739	630241.798
E1	4834766.190	630770.642
E2	4834748.503	630779.544
E3	4834714.849	630781.434
E4	4834722.122	630783.132
E5	4834711.552	630951.162
E6	4834756.161	630947.313
E7	4834823.358	630928.268
E8	4834863.353	630908.139
E9	4834909.162	630972.964
E10	4834879.15	630988.070
E11	4834858.650	630998.388
E12	4834762.908	631025.523
E13	4834706.568	631030.384
E14	4834700.219	631131.303
E15	4834711.504	631125.153
E16	4834903.607	631087.712
E17	4834926.170	631076.356
E18	4835057.826	631323.557
E19	4835029.489	631337.820
E20	4834795.572	631404.116
E21	4834682.442	631413.877
E22	4834653.873	631868.013
E23	4834834.253	631852.451
E24	4835231.799	631739.778
E25	4835269.417	631720.845
E26	4834967.519	631055.545
E27	4835130.917	631286.77
E28	4835393.520	631658.382
N1	4834754.001	630739.991
N2	4834758.167	630759.348
N3	4834758.392	630760.605
N4	4834761.196	630780.205
N5	4835110.048	630782.563
N6	4835099.913	630711.735
N7	4835095.447	630686.773
N8	4835080.395	630616.824
N9	4835345.295	630516.862
N10	4835369.181	630627.872
N11	4835377.089	630672.071
N12	4835393.174	630784.476
N13	4835848.198	630787.552
N14	4835822.552	630608.327
N15	4835809.112	630533.209
N16	4835771.026	630356.210
SA1	4834740.276	630763.197
SA2	4834750.993	630740.638
SA3	4834720.882	630768.752

**MAP NO. 346**

Map filed at the office of the Ontario Ministry of Municipal Affairs and Housing, 777 Bay St., Toronto, Ontario,

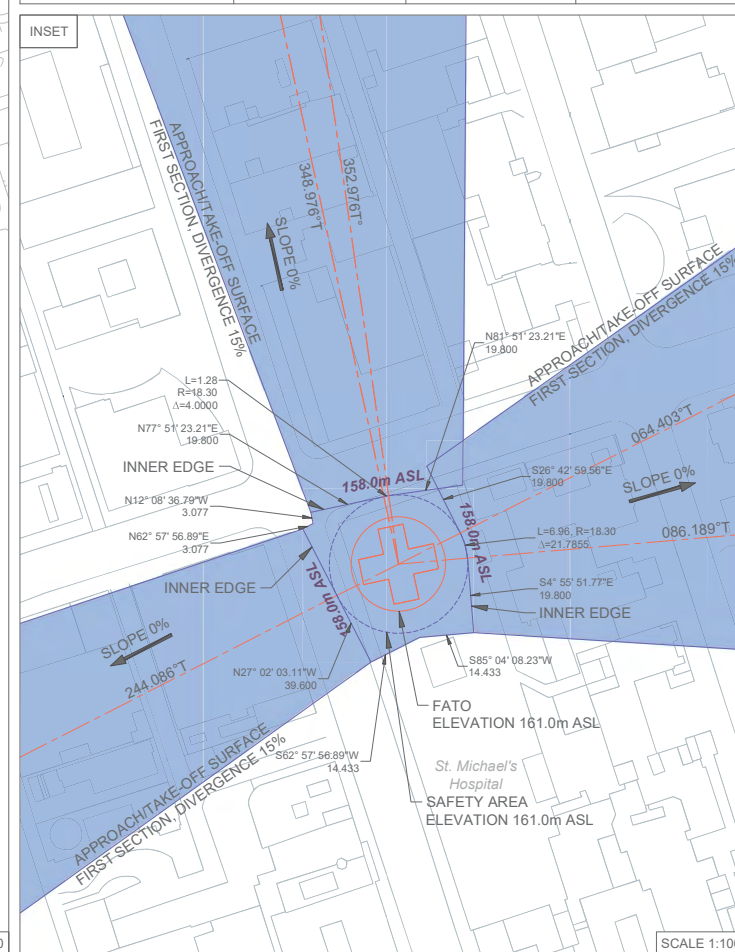
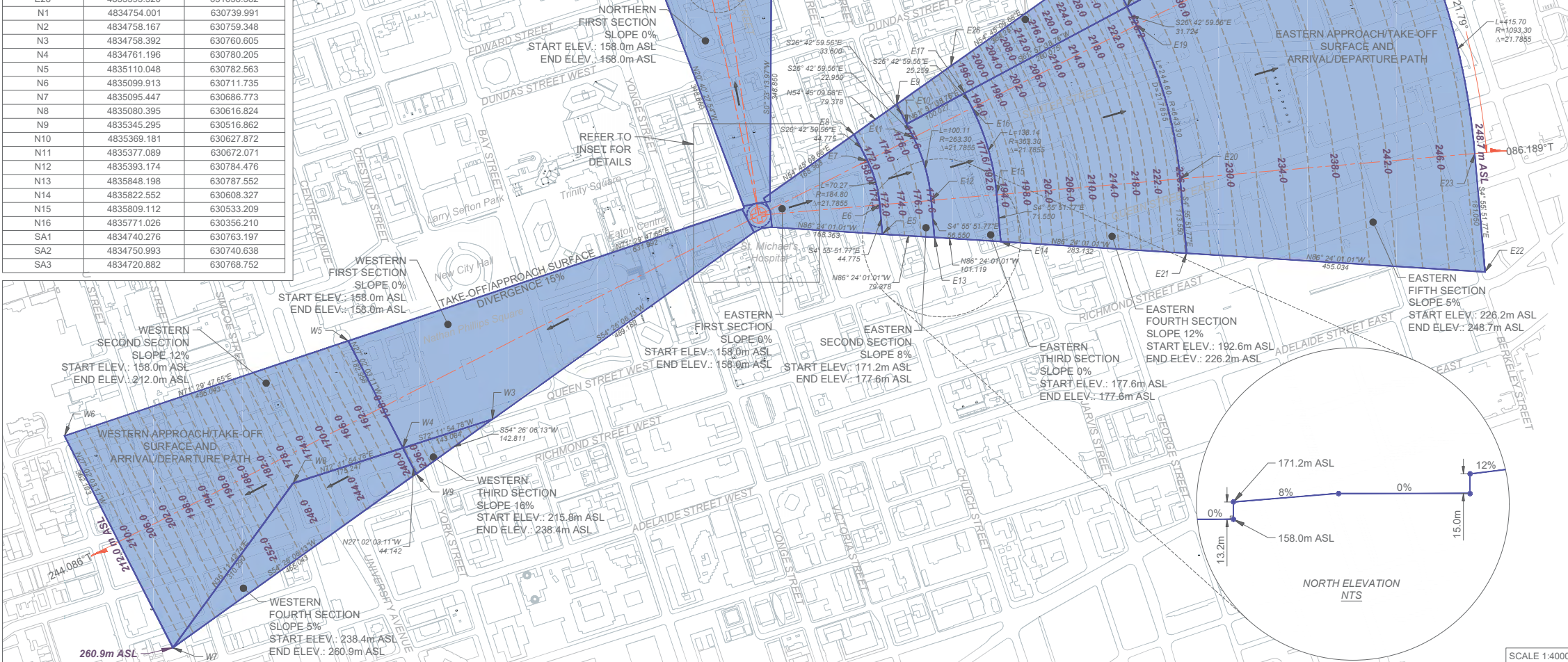
Planning Act

Ontario Regulation: 10/24

Date: January 26, 2024

Original Signed By: Minister of Municipal Affairs and Housing

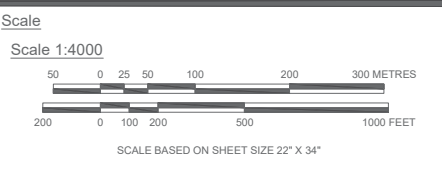
ST. MICHAEL'S HOSPITAL HELIPORT (CTM4)			
EXISTING HELIPORT CLASSIFICATION	H1	DAY/NIGHT	VFR
HELIPORT PHYSICAL CHARACTERISTICS			
FATO WIDTH	25.0m		
FATO ELEVATION	161.0m ASL		
FLIGHT PATH PROTECTIONS			
DATA	EASTERN ARR/DEP PATH	NORTHERN ARR/DEP PATH	WESTERN ARR/DEP PATH
SAFETY AREA WIDTH			
INNER EDGE ELEVATION	158.0m ASL	158.0m ASL	158.0m ASL
FLIGHT PATH ORIGIN LOCATION (WGS84)			
NORTHING	4834740.276		
EASTING	630763.197		
LATITUDE	N43° 39' 14.9895"		
LONGITUDE	W79° 22' 42.27501"		
FLIGHT PATH BEARINGS (FROM)			
GRID NORTH	63.284° TO 85.069°	347.856° TO 351.856°	242.966°
TRUE NORTH	64.403° TO 86.189°	348.976° TO 352.976°	244.086°
OBSTACLE LIMITATION SURFACES - APPROACH/TAKE-OFF SURFACE			
DIVERGENCE	15%	15%	15%
FIRST SECTION LENGTH	166.5m	345.0m	625.0m
FIRST SECTION SLOPE	0%	0%	0%
SECOND SECTION LENGTH	78.5m	280.0m	450.0m
SECOND SECTION SLOPE	8% [1:12.5]	12% [1:8.333]	12% [1:8.333]
THIRD SECTION LENGTH	100.0m	450.0m	141.2m
THIRD SECTION SLOPE	0%	5% [1:20]	16% [1:6.25]
FOURTH SECTION LENGTH	280.0m	N/A	450.0m
FOURTH SECTION SLOPE	12% [1:8.333]	N/A	5% [1:20]
FIFTH SECTION LENGTH	450.0m	N/A	N/A
FIFTH SECTION SLOPE	5% [1:20]	N/A	N/A
SIXTH SECTION LENGTH	380.0m	N/A	N/A
SIXTH SECTION SLOPE	16% [1:6.25]	N/A	N/A
SEVENTH SECTION LENGTH	450.0m	N/A	N/A
SEVENTH SECTION SLOPE	5% [1:20]	N/A	N/A
TOTAL LENGTH	1075.0m	1075.0m	1075.0m



**Legend**

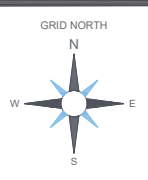
- OBSTACLE LIMITATION SURFACE (OLS)
- OLS ELEVATION CONTOUR (m ASL)
- FLIGHT PATH PROJECTED CENTRELINE

- Notes**
- COORDINATES COMPUTED FROM SURVEY DATED MARCH 16th, 2016.
  - COORDINATES UNLESS OTHERWISE SPECIFIED ARE IN WGS84 (TRF 2016) UTM Z17 AND ELEVATIONS IN REFERENCE TO CGVD2013.
  - GEOID HEIGHT COMPUTED AS -37.184 METRES RELATIVE TO WGS84.
  - AVIA NG INC. DO NOT TAKE RESPONSIBILITY FOR THE ACCURACY OF UNDERLYING CADASTRAL DATA.
  - UNDERLYING CADASTRAL DATA SUBJECT TO CHANGE.



Client: UNITY HEALTH TORONTO / ST. MICHAEL'S HOSPITAL

Consultant: AVIA NG INC.



Location: TORONTO, ONTARIO

Title: **ST. MICHAEL'S HOSPITAL HELIPORT ENHANCED FLIGHT PATH PROTECTIONS WITH METES AND BOUNDS**

Date: OCT 31, 2023

Amendment No.: 0

Avia NG Project No.: 22-0039-00

Drawing No.: SM3