

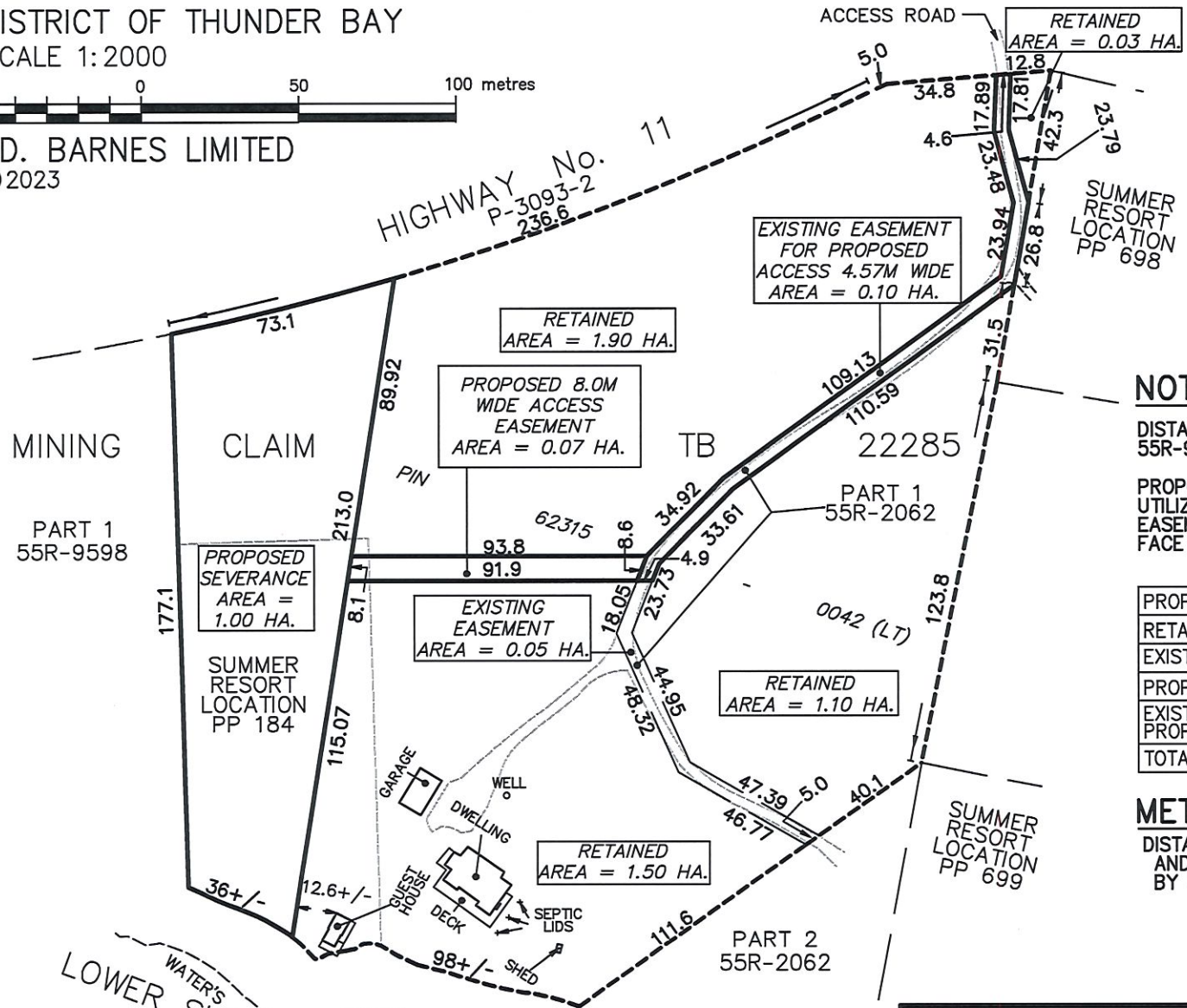
PLAN SHOWING
PROPOSED SEVERANCE

DISTRICT OF THUNDER BAY

SCALE 1:2000



J.D. BARNES LIMITED
© 2023



NOTE

DISTANCE WERE DERIVED FROM PLANS 55R-2062, 55R-9558 AND MTO PLAN P-3093-2.

PROPOSED ACCESS FOR SEVERED PROPERTY TO UTILIZE EXISTING EASEMENT AND 8.0M WIDE EASEMENT AS SHOWN BY HEAVY LINES ON THE FACE OF THE PLAN.

PROPOSED SEVERNACE	1.00 Ha.
RETAINED (EXCLUDING EASEMENT)	4.53 Ha.
EXISTING EASEMENT	0.05 Ha.
PROPOSED ACCESS EASEMENT (0.8M)	0.07 Ha.
EXISTING EASEMENT FOR PROPOSED ACCESS (4.57M)	0.10 Ha.
TOTAL	5.75 Ha.

METRIC

DISTANCES SHOWN ON THIS PLAN ARE IN METRES AND CAN BE CONVERTED TO FEET BY DIVIDING BY 0.3048.

CAUTION

THIS IS NOT A PLAN OF SURVEY AND SHALL NOT BE USED EXCEPT FOR THE PURPOSE INDICATED IN THE TITLE BLOCK.

LOWER SHEBANDOWAN LAKE
WATER'S EDGE



J.D. BARNES LIMITED

LAND INFORMATION SPECIALISTS
1158 RUSSELL STREET, THUNDER BAY, ON P7B 5N2
T: (807) 622-6277 F: (807) 626-8040 www.jdbarnes.com

SURVEYING
MAPPING
GIS

TBJ/MS	DRAWN
RK/JOA	CHECKED
11/07/23	DATED:
23-32-212-00	Ref. No.

PLOTTED 19/12/2023