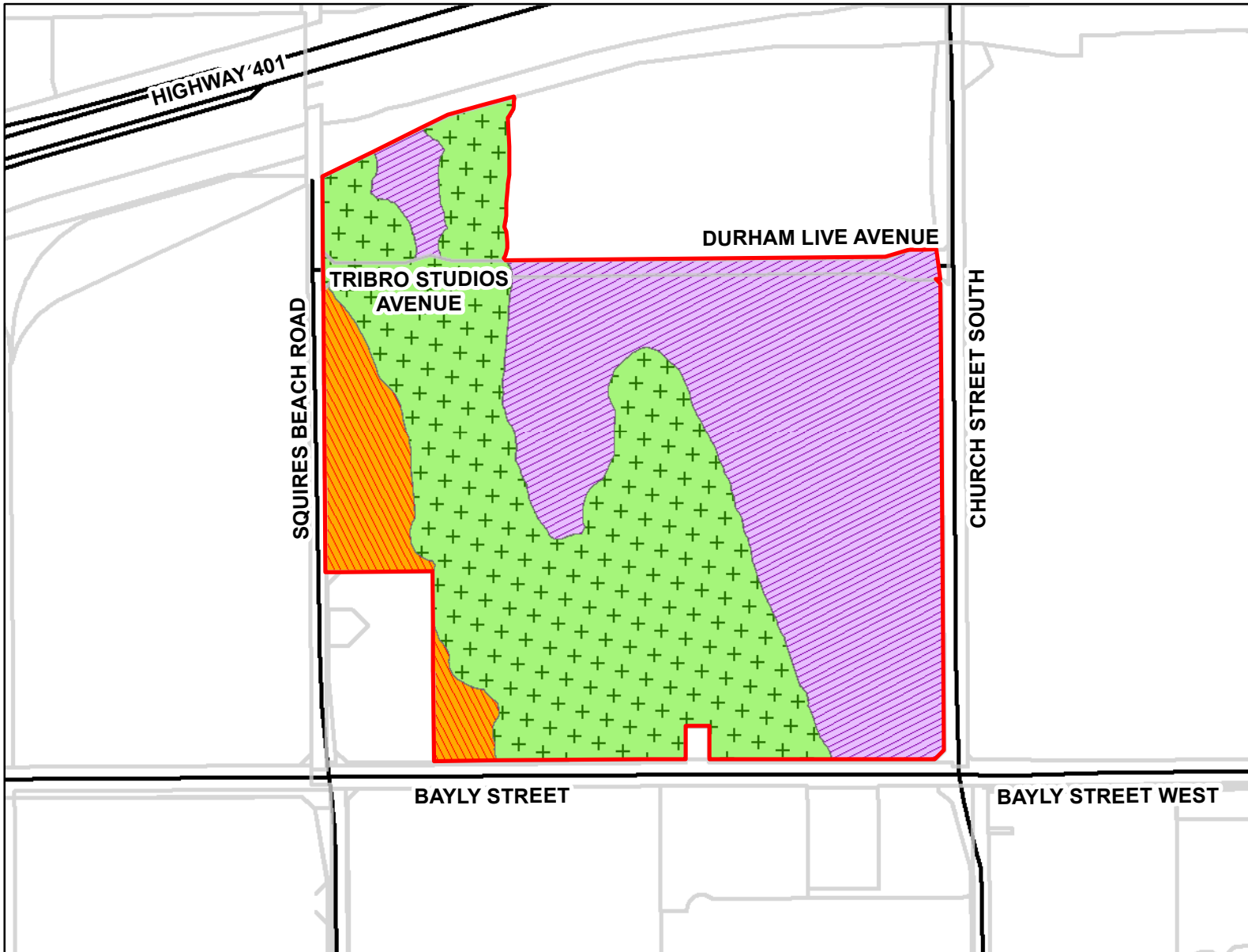


Part of Lots 15 and 16, Concession 1  
 City of Pickering, Regional Municipality of Durham



**MAP No. 265**

Map filed at the office of the Ontario Ministry of Municipal Affairs and Housing, 777 Bay St., Toronto, Ontario,







Planning Act

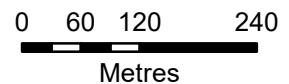
Ontario Regulation: 515/21

Date: July 2, 2021

Original Signed By: Assistant Deputy Minister  
 Municipal Services Division  
 Ministry of Municipal Affairs and Housing

**LEGEND**

-  Land Subject to Zoning Order
-  Parcels
-  Mixed Employment Zone
-  Mixed Use Major Tourist and Entertainment Zone
-  Natural Heritage and Open Space Zone
-  Roads



**Map Description:**

This is map no. 265 referred to in a Minister's Zoning Order. It shows lands which are located in Part of Lots 15 and 16, Concession 1, in the City of Pickering, in the Regional Municipality of Durham. We are committed to providing accessible customer service (<https://www.ontario.ca/page/accessible-customer-service-policy>).

On request, we can arrange for accessible formats and communications supports. Please contact MMAH by email ([mininfo@ontario.ca](mailto:mininfo@ontario.ca)) for regulation details.

**THIS IS NOT A PLAN OF SURVEY**

Information provided by the Ministry of Municipal Affairs and Housing, under licence with the Ministry of Natural Resources.  
 © 2021, Queen's Printer for Ontario.