

Shearwater  
Community Ctr

New Lot # 4

New Lot # 3

CN Rail

CN Rail

Road access

Retained

Existing cottage

Proposed New Lot # 4

66' crown reserve



Rudolph Road

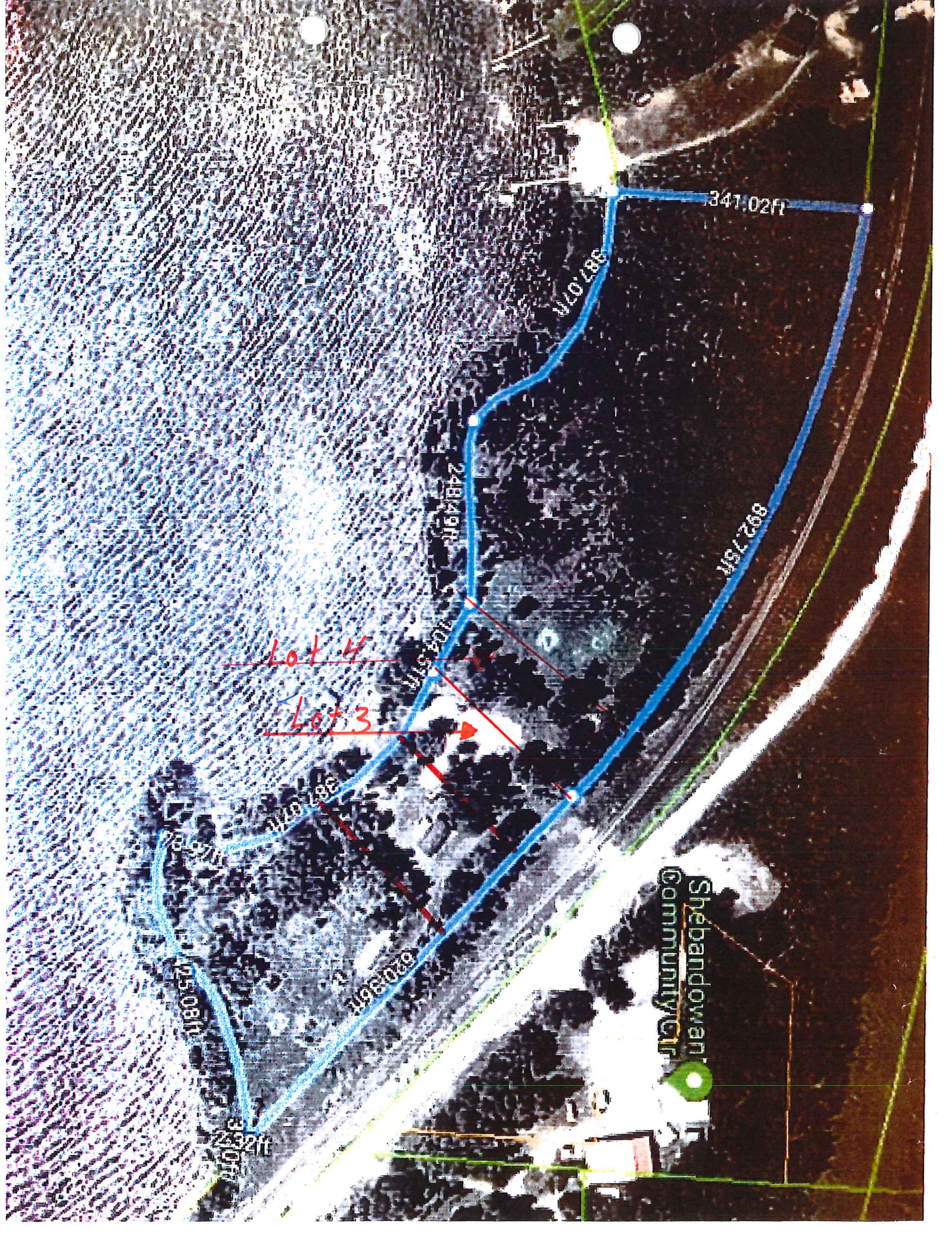
Map No. 201-2011

City of Toronto

Planning Department

Development Applications Branch





Shebandowan  
Community CTR