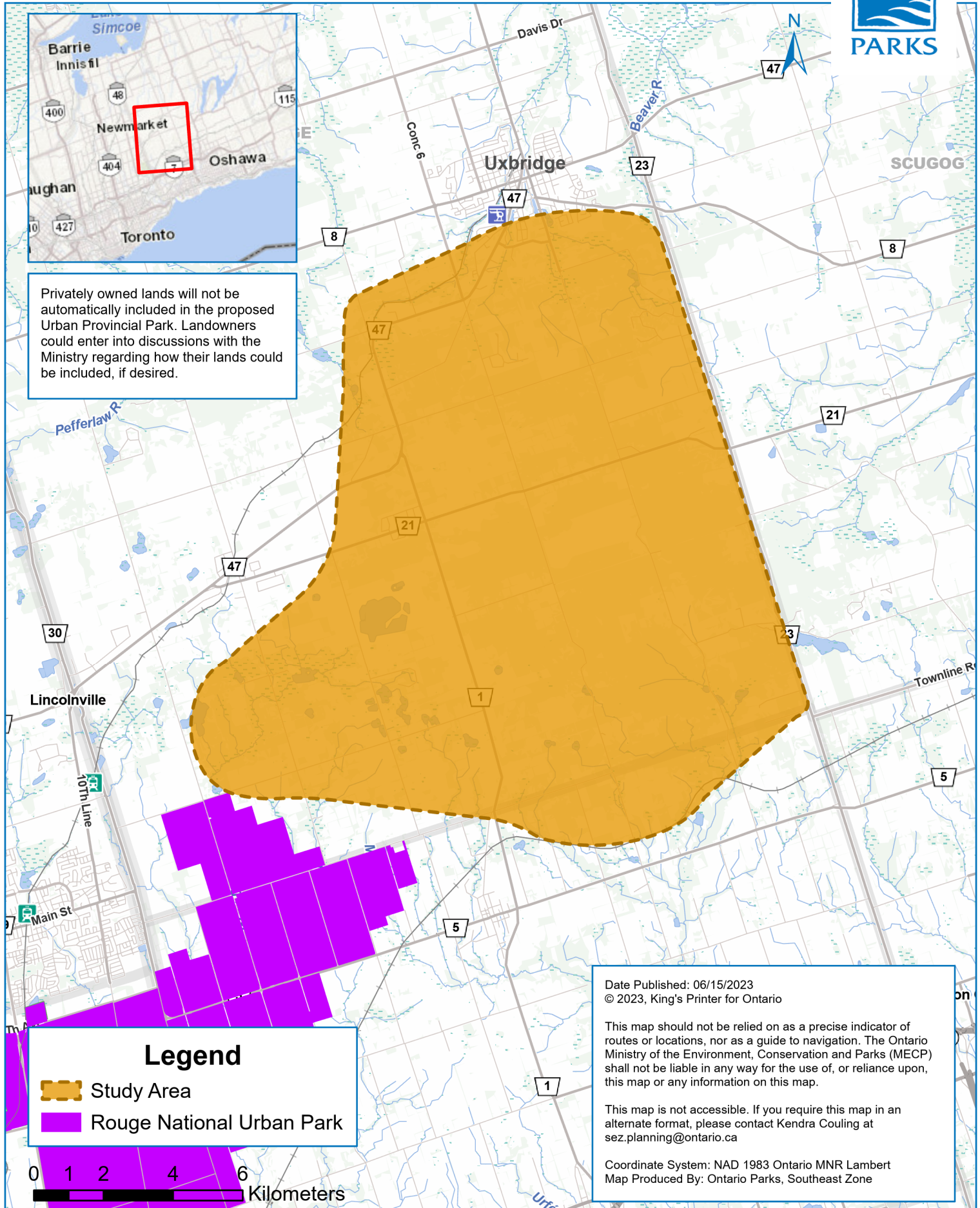


Study Area Under Consideration for Uxbridge Urban Provincial Park



Privately owned lands will not be automatically included in the proposed Urban Provincial Park. Landowners could enter into discussions with the Ministry regarding how their lands could be included, if desired.

Legend

- Study Area
- Rouge National Urban Park

0 1 2 4 6 Kilometers

Date Published: 06/15/2023
© 2023, King's Printer for Ontario

This map should not be relied on as a precise indicator of routes or locations, nor as a guide to navigation. The Ontario Ministry of the Environment, Conservation and Parks (MECP) shall not be liable in any way for the use of, or reliance upon, this map or any information on this map.

This map is not accessible. If you require this map in an alternate format, please contact Kendra Couling at sez.planning@ontario.ca

Coordinate System: NAD 1983 Ontario MNR Lambert
Map Produced By: Ontario Parks, Southeast Zone