

Figure 4

ONTARIO
 Wabakimi
 Kopka River
 Whitesand

Legend

-  Lake
-  Ecodistrict
-  Conservation Reserve
-  First Nation Reserve
-  Other Provincial Park
-  Wabakimi Provincial Park -- Original Boundary
-  Wabakimi, Kopka River, and Whitesand Provincial Parks



Ontario 

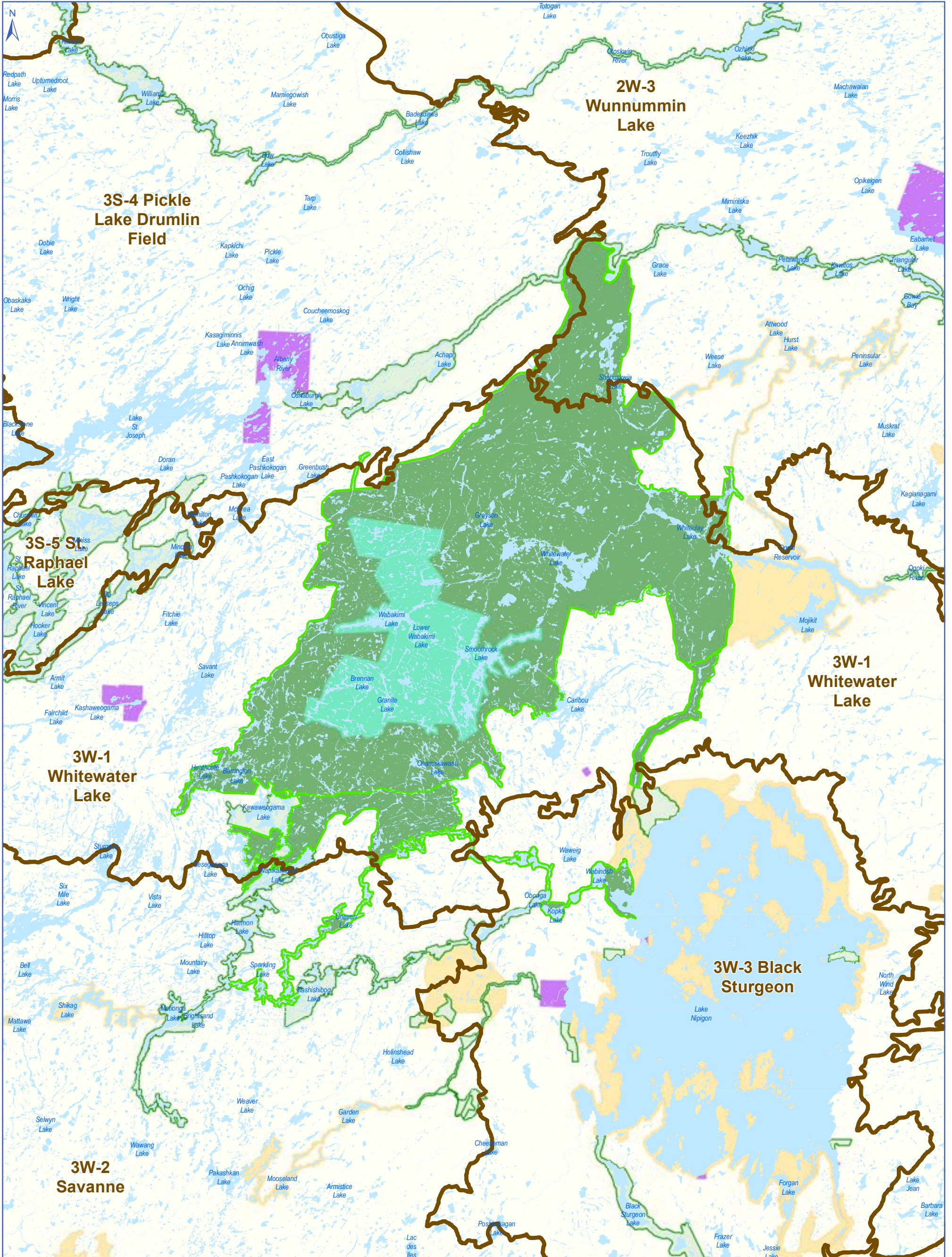
Land Information Ontario (LIO)
 compiled at a scale of 1:20000.

© 2020, Queen's Printer for Ontario.

This map is illustrative only. Do not rely on it as being a precise indicator of routes, locations or features, nor as a guide to navigation.

Projection: UTM, Zone 16N, NAD83
 Ontario Parks NW Zone
 Date: September 2020

1:900,000
 0 5 10 20
 km



Legend

Ecosites within Wabakimi Provincial Parks

- B49 - Black Spruce/Jackpine (d-f /cL)
- B128 - Organic Intermediate Conifer Swamp
- B50 - Spruce / Pine (d-f /cL)
- B12 - Spruce / Pine (VS /d-f)
- B55 - Hardwood (d-f /cL)
- B65 - Spruce / Pine (m /cL)
- B127 - Organic Poor Conifer Swamp
- B136 - Sparse Treed Fern
- B126/ B137 - Treed Bog

- Lake
- Conservation Reserve
- Other Provincial Park
- Wabakimi Provincial Park -- Original Boundary
- Wabakimi, Kopka River, and Whitesand Provincial Parks

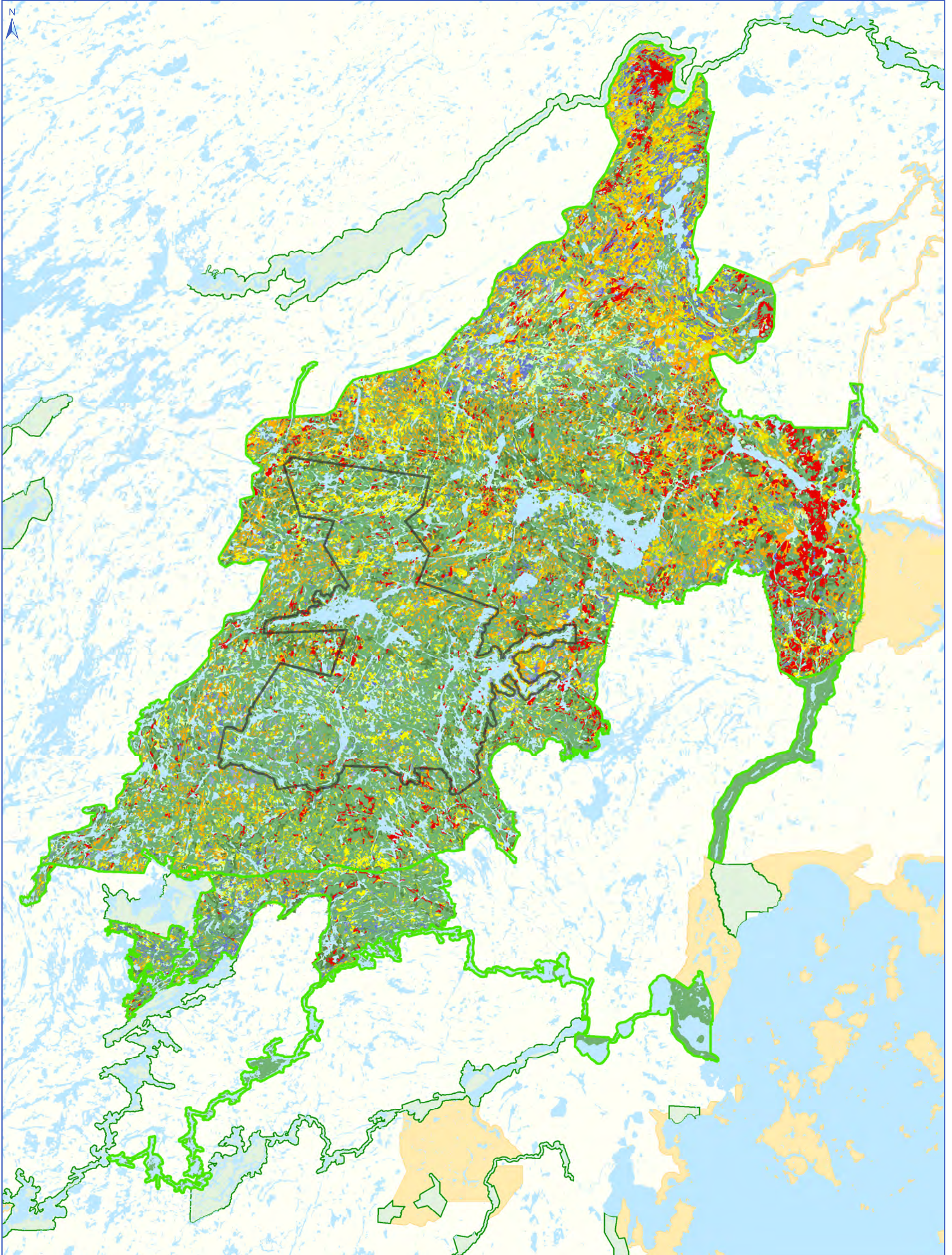


Base data derived from the Land Information Ontario (LIO) compiled at a scale of 1:20000.

© 2020, Queen's Printer for Ontario.

This map is illustrative only. Do not rely on it as being a precise indicator of routes, locations or features, nor as a guide to navigation.

Projection: UTM, Zone 16N, NAD83
Ontario Parks NW Zone
Date: September 2020



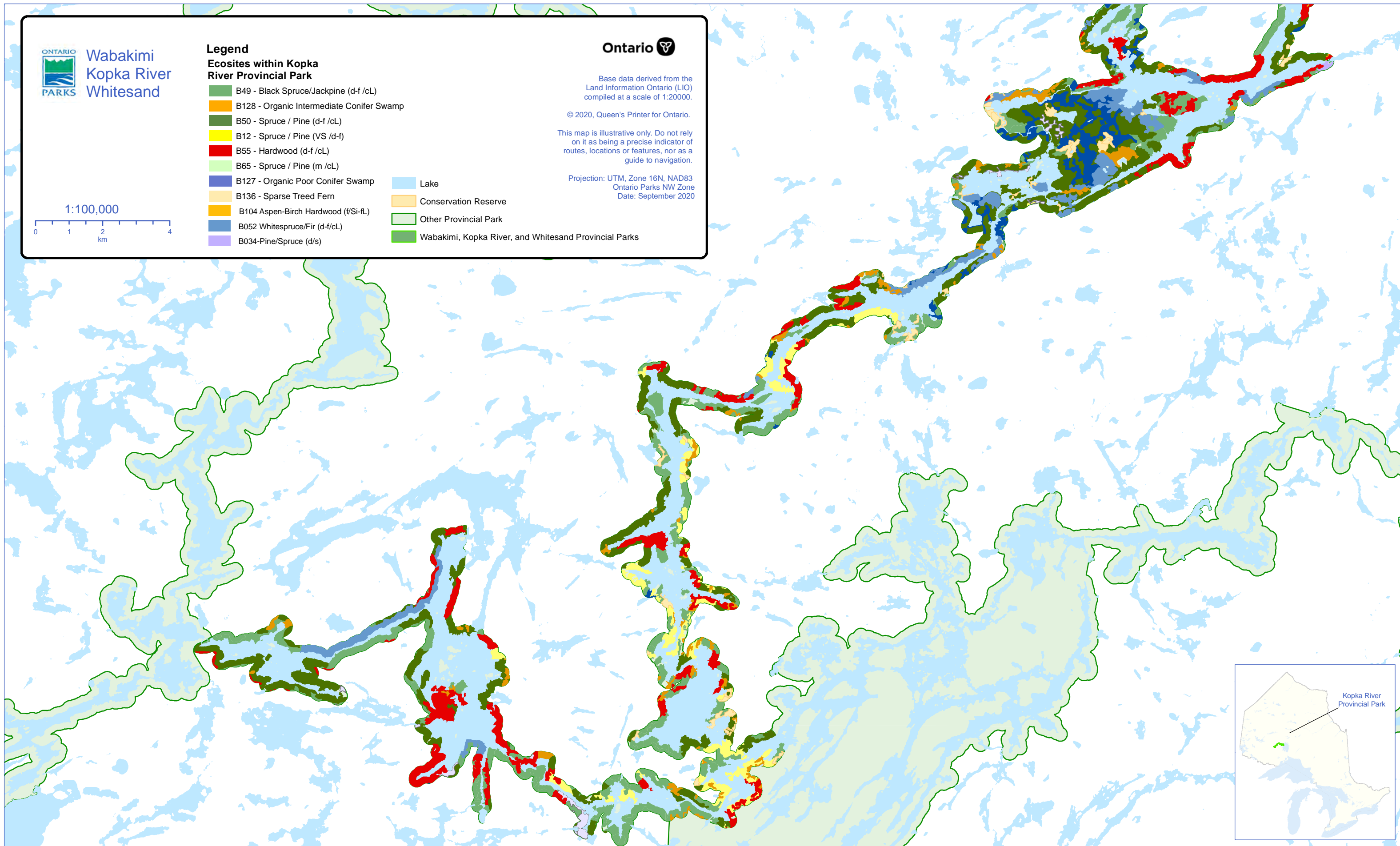
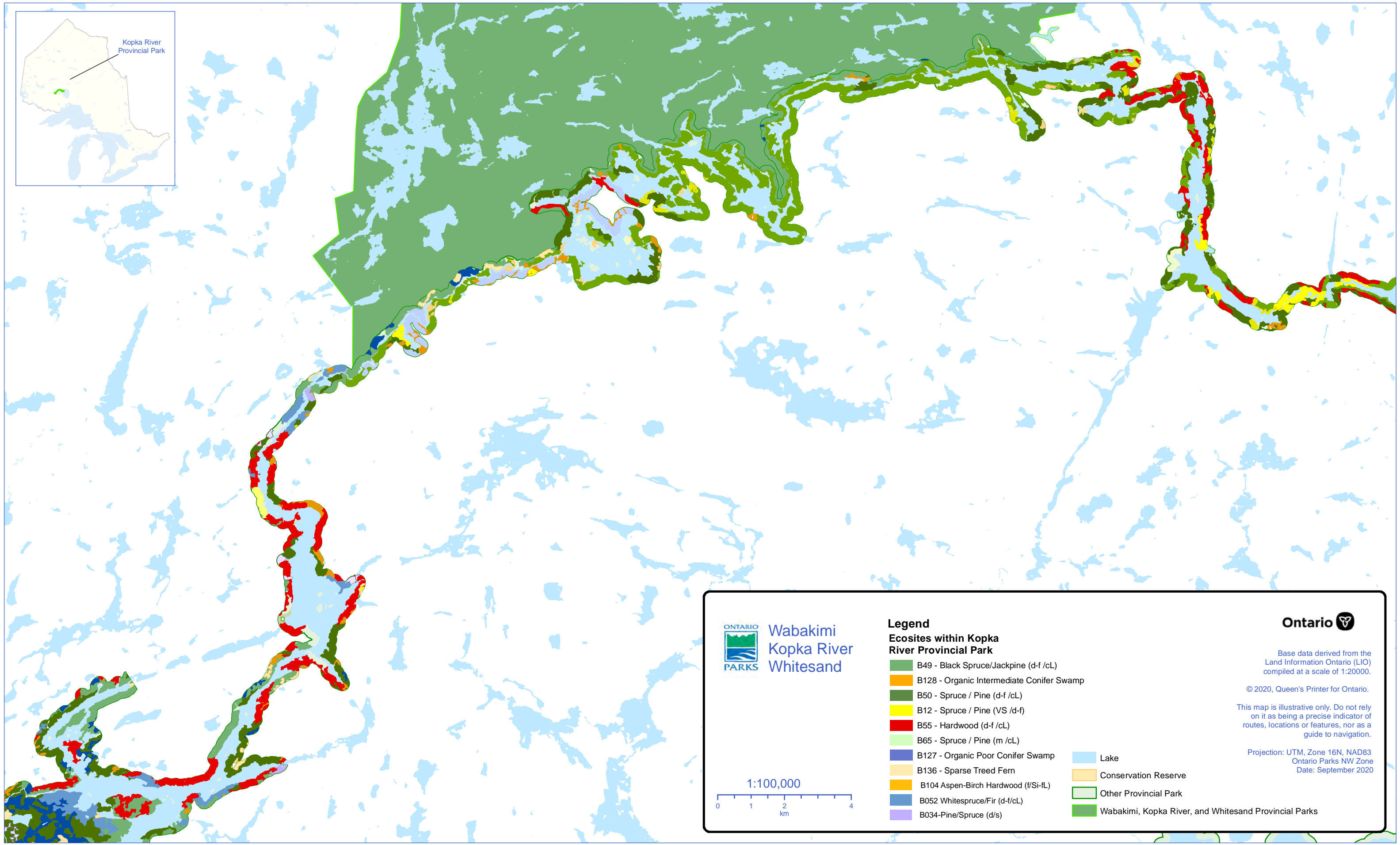



Figure 5C

Kopka Ecosites






**Wabakimi
Kopka River
Whitesand**

Legend

Ecosites within Kopka River Provincial Park

- B49 - Black Spruce/Jackpine (d-f /cL)
- B128 - Organic Intermediate Conifer Swamp
- B50 - Spruce / Pine (d-f /cL)
- B12 - Spruce / Pine (VS /d-f)
- B55 - Hardwood (d-f /cL)
- B65 - Spruce / Pine (m /cL)
- B127 - Organic Poor Conifer Swamp
- B136 - Sparse Treed Fern
- B104 Aspen-Birch Hardwood (f/Si-fL)
- B052 Whitespruce/Fir (d-f/cL)
- B034-Pine/Spruce (d/s)

Ontario 


Base data derived from the Land Information Ontario (LIO) compiled at a scale of 1:20000.

© 2020, Queen's Printer for Ontario.

This map is illustrative only. Do not rely on it as being a precise indicator of routes, locations or features, nor as a guide to navigation.

Projection: UTM, Zone 16N, NAD83
Ontario Parks NW Zone
Date: September 2020

1:100,000



- Lake
- Conservation Reserve
- Other Provincial Park
- Wabakimi, Kopka River, and Whitesand Provincial Parks

Figure 5D

Kopka Ecosites

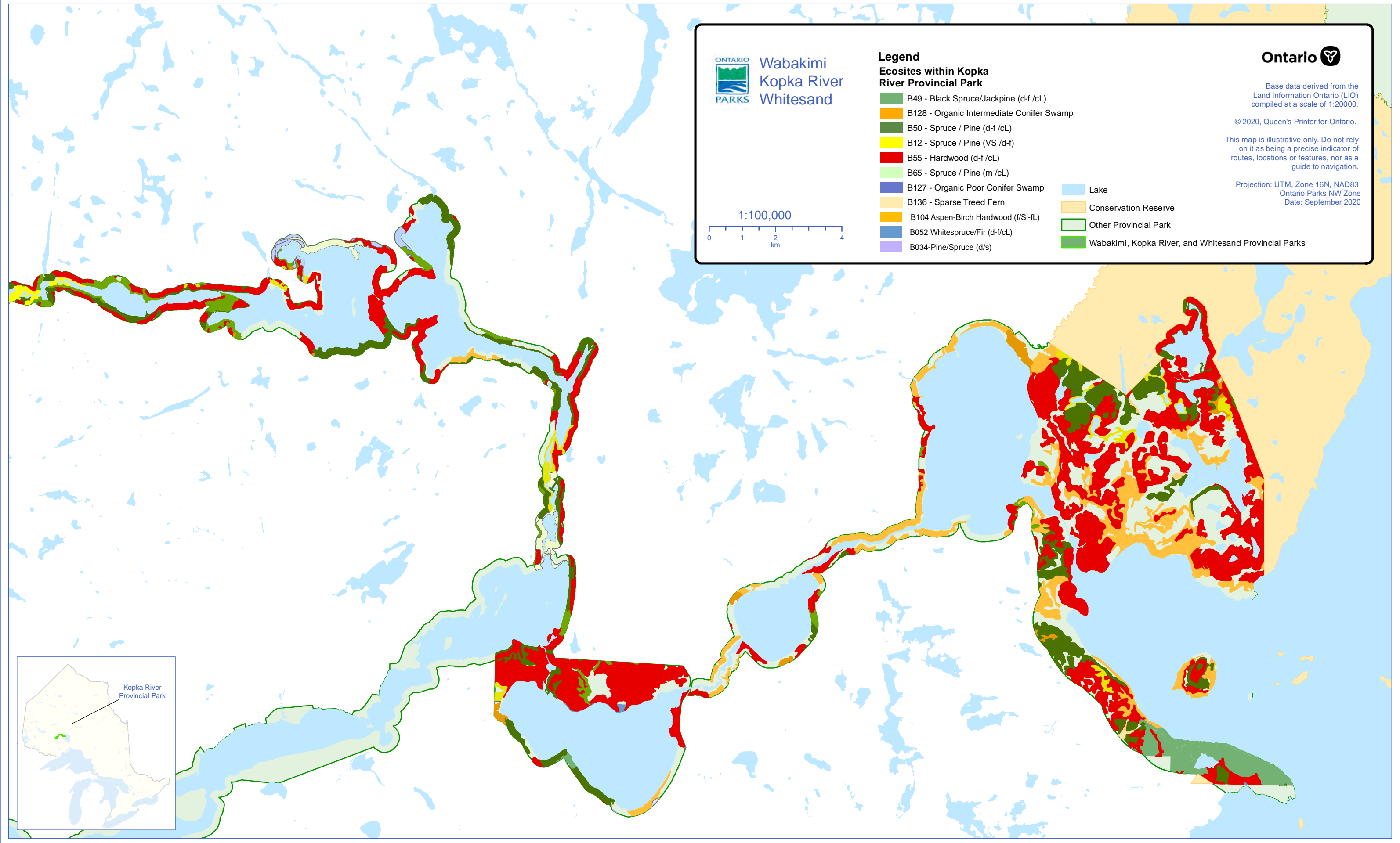


Figure 5E

Whitesand Ecosites

ONTARIO
PARKS
Wabakimi
Kopka River
Whitesand

- Legend**
Ecosites within Whitesand Provincial Park
- B49 - Black Spruce/Jackpine (d-f /cL)
 - B128 - Organic Intermediate Conifer Swamp
 - B50 - Spruce / Pine (d-f /cL)
 - B12 - Spruce / Pine (VS /d-f)
 - B55 - Hardwood (d-f /cL)
 - B65 - Spruce / Pine (m /cL)
 - B127 - Organic Poor Conifer Swamp
 - B136 - Sparse Treed Fern
 - B126/ B137 - Treed Bog
 - B034 Pine/Spruce (d/s)
 - B035 Pine /Spruce (d/s)
 - B052 Whitespruce/Fir (d-f/cL)
 - Lake
 - Conservation Reserve
 - Other Provincial Park
 - Wabakimi, Kopka River, and Whitesand Provincial Parks



Ontario

Base data derived from the Land Information Ontario (LIO) compiled at a scale of 1:20000.

© 2020, Queen's Printer for Ontario.

This map is illustrative only. Do not rely on it as being a precise indicator of routes, locations or features, nor as a guide to navigation.

Projection: UTM, Zone 16N, NAD83
Ontario Parks NW Zone
Date: September 2020

1:100,000
0 0.5 1 2
km

