

Authority: Planning and Housing Committee Item PH34.1
as adopted by City of Toronto Council on June 15 and 16,
2022

CITY OF TORONTO

Bill ~

BY-LAW -2022

To adopt Amendment 583 to the Official Plan for the City of Toronto respecting the Environment and Climate Change Policies.

Whereas authority is given to Council under the Planning Act, R.S.O. 1990, c. P.13, as amended, to pass this By-law; and

Whereas Council of the City of Toronto has provided information to the public, held a public meeting in accordance with Section 17 of the Planning Act and held a special public meeting in accordance with the requirements of Section 26 of the Planning Act;

The Council of the City of Toronto enacts:

1. The attached Amendment 583 to the Official Plan is adopted pursuant to the Planning Act, as amended.

Enacted and passed on [DATE] , 2022.

Frances Nunziata,
Speaker

John D. Elvidge,
City Clerk

(Seal of the City)

**AMENDMENT 583 TO THE OFFICIAL PLAN
OF THE CITY OF TORONTO**

The Official Plan of the City of Toronto is amended as follows:

Chapter 2: Shaping the City

1. Section 2.1, building a More Liveable Urban Region is amended by:

- a. Adding the following sentence before the words "The way in which" and after the words "where we play" in the first paragraph of non-policy text as follows:

"Connected natural spaces and a regional natural heritage system with thriving biodiversity are necessary components for our communities to adapt to and mitigate the impacts of climate change locally."

- b. Adding the words "conservation authorities," after the word "municipalities," and before the words "the Province" in Policy 2.1.1;
- c. Deleting the word "and" before "natural heritage" and after "spaces" in existing sub-policy k) to Policy 2.1.1;
- d. Adding the words "water resources," before "natural heritage" and after "spaces" in existing sub-policy k) to Policy 2.1.1;
- e. Adding a comma after the word "functions" and before the word "and" in existing sub-policy k) to Policy 2.1.1;
- f. Deleting the words "these features" and replacing them with the word "them" in existing sub-policy k) to Policy 2.1.1 and the remainder of sub-policy k) being "recognizes the role of river valleys that connect the Greenbelt to Lake Ontario and protects the region's prime agricultural land" is moved to create a new sub-policy l) to Policy 2.1.1. to read as follows:

"l) recognizes the role of river valleys that connect the Greenbelt to Lake Ontario and protects the region's prime agricultural land; and"

- g. Adding new sub-policy m) to Policy 2.1.1 as follows:

"m) mitigates and adapts to the impacts of climate change, improves resilience, reduces greenhouse gas emissions, and contributes to greater environmental sustainability."

- h. Revising the sidebar on the "Greenbelt" as follows:

- i. Replace the word "protects" in the second sentence with the word "contains";

- ii. Replace the words "link the Greenbelt to Lake Ontario and other inland lakes and provide ecological and hydrological functions that are important to the long-term health of the Greenbelt." with the following words ", and the Urban River Valleys. The Urban River Valleys run through existing and approved urban areas and assist in recognizing the importance of connections to Lake Ontario and other areas in southern Ontario."
- i. Adding a new sidebar as follows:
 - "Watershed Planning**
 - Watershed planning provides a framework for establishing goals, objectives, and direction for the protection of water resources, the management of human activities, land, water, aquatic life, and resources within a watershed and for the assessment of cumulative, cross-jurisdictional and cross-watershed impacts. Watershed plans can inform land use, infrastructure, and development decision and identify opportunities to restore and enhance natural features and areas. The City of Toronto works with the TRCA and other municipalities to undertake watershed planning to inform the protection, enhancement and restoration of the quality and the quantity of water and decisions related to planning for growth. The development of watershed plans will consider cross-jurisdictional and cross-watershed impacts."
- 2. Section 2.2 Structuring Growth in the City: Integrating Land Use and Transportation, under the heading Service Foundations for Growth is amended by:
 - a. Adding the words "policies, programs, and" before the word "measures" and after the word "implementing" in existing sub-policy b) of existing Policy 9 of Section 2.2;
 - b. Deleting the words "and activities which" after the word "measures" and before the word "reduce" and replacing it with the word "which:" in existing sub-policy b) of Existing Policy 9 of Section 2.2;
 - c. Adding the words ", greenhouse gas emissions and energy use;" after the word "flows" and before the word "improve" in existing sub-policy b) of Existing Policy 9 of Section 2.2;
 - d. Adding the words "; enable heat recovery and/or rejection; and address the cumulative impacts of a changing climate and extreme weather" after the word "quality" and before the words "in accordance" in existing sub-policy b) of existing Policy 9 of Section 2.2;
 - e. Deleting the word "and" at the end of sub-policy b)
 - f. Adding the word "and" after the word "improvements" at the end of existing sub-policy c) of existing Policy 9 of Section 2.2;

- g. Adding new sub-policy d) to existing policy 9 of Section 2.2. as follows:

"d) ensuring appropriate sizing and location of infrastructure to accommodate intense storm events."

- h. Adding the new sidebar as follows:

"Climate Emergency

Climate change is the biggest challenge facing our planet. In 2019 Toronto City Council voted unanimously to declare a climate emergency and accelerate efforts to mitigate and adapt to climate change. In 2021 Council adopted the Net Zero Strategy to reduce community-wide greenhouse gas (GHG) emissions in Toronto by 2040.

Meeting the City's future GHG reduction targets will require rapid action to scale up existing programs and significant levels of investment and coordination with other levels of government. Implementing the Toronto Green Standard plays an important role in reducing GHG emissions in new development by requiring and incenting higher performance, leading to net zero emissions new construction by 2028.

Toronto's Resilience Strategy states that the City needs to become more resilient to the shocks and stresses of a changing climate. Projections indicate that human-caused climate change will result in shocks and stresses felt across Toronto in the near future. Flooding and extreme heat are hazards exacerbated by climate change and increased urbanization throughout our watersheds pose the greatest and fastest growing risk to residents.

Applying an equity lens, actions to prioritize planning and investment to mitigate risk through improved resiliency should focus on areas with the most vulnerable populations to each hazard."

3. Section 2.2.2 Centres: Vital Mixed Use Communities is amended by:

- a. Replacing existing sub-policies i. to iii. in existing policy 2.2.2.2 n) with the following new sub-policies i. to v.:

"i. achieving net zero greenhouse gas emissions, including impacts from embodied emissions from materials;
 ii. energy conservation and peak demand management;
 iii. resilience to power disruptions; and
 iv. low carbon thermal energy solutions, including district energy systems, as well as local renewable electricity production and storage through preparation of a Community Energy Plan; and
 v. reducing the emissions associated with transportation by reducing single-occupant vehicle trips, supporting active transportation

- infrastructure, and encouraging the use of zero and low-emissions vehicles;"
- b. Deleting the words ", stormwater management systems" after the word "planting" and before the word "and" in existing sub-policy 2.2.2.2 o);
 - c. Adding the words ", which are integrated with the stormwater management strategy" after the word "roofs" in existing sub-policy 2.2.2.2 o);
 - d. Adding the following new sidebar:

"Climate Change and Infrastructure
Climate change poses a serious challenge for maintaining existing infrastructure and planning for new infrastructure. Vulnerability assessments can help to identify risks and options for enhancing resilience. Similarly, comprehensive stormwater management planning, including the use of green infrastructure and appropriate low impact development, can increase the resiliency of our communities."
 - e. Replacing the existing sidebar on "Community Energy Planning" with the following:

"Community Energy Planning
Community Energy Planning (CEP) is a process that considers energy needs early in the land use and infrastructure planning process. CEP identifies opportunities to integrate local energy solutions at a building or neighbourhood-scale, with the overall goal of reducing energy use and increasing the use of renewable and low-carbon energy sources. Examples of CEP include the extensive greening of homes and buildings, and the development and use of district energy systems."
4. Section 2.2.3 Avenues: Reurbanizing Arterial Corridors is amended by:
 - a. Adding the following sub-policy to existing policy 2.2.3.2 a) as follows:

"vi. consideration of, and preparation for, the impacts of a changing climate."
 - b. Deleting the word ", and" in the existing sub-policy 2.2.3.6 vii. 3);
 - c. Adding the words ", and promote food and organic waste diversion" after the words "recycling".
 5. Section 2.3.1 Healthy Neighbourhoods is amended by adding a new Policy 13 as follows:

"13. In *Neighbourhoods* and *Apartment Neighbourhoods* adjacent to the Natural Heritage System, development will be encouraged to provide for natural landscaped surfaces that increase the ecological function and/or biodiversity of the development site."

6. Section 2.3.2 Toronto's Green Space System and Waterfront is amended by:
- a. Adding the words "water resource and" before the word "natural" and after the word "significant" in the first bullet of the third paragraph of non-policy text;
 - b. Deleting the word "(2005)" after the word "Plan" and before the words "In recognition" in the existing sidebar entitled "Rouge Valley Area"; and
 - c. Replacing the words "Rouge National Urban Park" with the words "*Rouge National Urban Park Act* and" before the word "Management" and after the word "The" in the existing sidebar entitled "Rouge Valley Area".

Chapter 3, Building a Successful City

7. Section 3.1, The Built Environment is amended by:
- a. Deleting the word ", and" after the word "architecture" before the word "urban" in the second paragraph of non-policy text;
 - b. Adding the word "and" after the word "design," and before the word "environmentally" in the second paragraph of non-policy text;
 - c. Replacing the words "consistent with energy efficiency standards" with the words "that work together to mitigate and adapt to the impacts of climate change."
8. Section 3.1.1, The Public Realm is amended by:
- a. Adding a new sub-policy v) to existing Policy 3.1.1.6 a) as follows:

"v) opportunities for shade in the summer, to ensure pedestrian comfort related to summer heat conditions;"
 - b. deleting the word "and" after existing Policy 3.1.1.5 a) ii) and add the word "and" after existing Policy 3.1.1.5 a) iii);
 - c. Adding the words "and Low Impact Development" to the title of existing sidebar on "Green Infrastructure";
 - d. Adding the following to the existing sidebar on "Green Infrastructure":

"Low impact development is a component of green infrastructure, which is an approach to stormwater management that seeks to manage rain and other precipitation as close as possible to where it falls to mitigate the impacts of increased runoff and stormwater pollution. It typically includes a set of site design strategies and distributed, small-scale structural practices to mimic the natural hydrology to the greatest extent possible

through infiltration, evapotranspiration, harvesting, filtration, and detention of stormwater."

9. The sixth paragraph of non-policy text in Section 3.1.5, Heritage Conservation is amended by:
 - a. Adding the words "and water resources features are" after "natural heritage" and before "is also an important ..."
 - b. Adding the word "the" before the word "policies" and after the word "in";
 - c. Replacing the words "protecting the Natural Heritage System contained in" with the word "of";
 - d. Replacing the words "Map 9" with the words "Maps 9A and 9B" after the word "and" and before the words "of the Plan.";
 - e. Replacing the words "Natural Heritage Areas" with the words "natural heritage and water resource features."
10. Section 3.1.2 Built Form is amended by adding a new Policy 3 after existing Policy 2 as follows:

"3. Development will be sustainable, low carbon and resilient to climate change through the orientation and design of new buildings to maximize passive heating and cooling, improve energy efficiency and reduce greenhouse gas emissions."
11. Section 3.3. Building New Neighbourhoods is amended by:
 - a. Deleting the sub-policy f) in existing policy 3.3.1 f) and replacing it with the following:

"f) a strategy for:
 - i. net zero greenhouse gas emissions development, including embodied emissions from materials;
 - ii. energy conservation and peak demand management;
 - iii. resilience to power disruptions and small local integrated energy solutions that incorporate renewables;
 - iv. low carbon thermal energy solutions, including district energy systems; and
 - v. local electricity production;"
 - b. Adding the words "that integrates green infrastructure where appropriate, prepares for the impacts of a changing climate, and identifies appropriate adaptation strategies" after the word "conservation" and before the word "; and" in existing sub-policy g) in existing policy 3.3.1 g);

- c. Adding the word "integrated" after the word "for" and before the word "waste" in existing sub-policy h) in existing policy 3.3.1 h)
 - d. Adding the words ", source reductions, adaptive reuse and construction waste diversion" after the word "management" in existing sub-policy h) in existing policy 3.3.1 h)
12. Section 3.4, The Natural Environment, non-policy text, paragraph two is amended by:
- a. Adding the word "compact" before the word "forms" and after the word "in";
 - b. Replacing the words "energy consumption" with the words "harmful greenhouse gas emissions" after the word "reduce" and before the words "and air";
 - c. Deleting the word "better" after the word "Through" and before the word "sustainable";
 - d. Adding the word ", water," after the word "energy" and before the words "and reduce";
 - e. Adding the words "through the use of green infrastructure (including low impact development)" after the word "run-off";
13. Section 3.4, The Natural Environment, non-policy text, paragraph three is amended by adding the words "and prepared for" after the word "considered" and before the words "in new".
14. Section 3.4, The Natural Environment, non-policy text, paragraph four is amended by:
- a. Delete the word "heritage" after the word "natural" and before the word "features" in non-policy text paragraph four;
 - b. Replacing the words "natural habitats" with the words "terrestrial and water resource features and areas" after the words "mosaic of" and before the word "that" in non-policy text paragraph four;
 - c. Replacing the word "nature" with the word "life" after the word "of" and before the word "in";
 - d. Replacing the word "provide" with the word "provides" after the word "and" and before the word "important";
 - e. Adding the words "and water resource" after the word "heritage" and before the word "features";
 - f. Replacing the words "system on Map 9." with the words "and water resources systems on Map 9A, 9B and 9C." after the words "heritage";

- g. Replacing the words "system is" with the words "and water resources systems are" after the word "heritage" and before the word "important";
 - h. Replacing the word "needs" with the word "need" after the word "and" and before the word "to";
 - i. Replacing the words "it is" with the words "they are" after the word "term" and before the word "made"
 - j. Replacing the word "the" with the word "these" after the word "enhancing" and before the word "natural";
 - k. Replacing the words "in areas near the natural heritage systems." with the words "and infrastructure in areas near these systems." after the word "development";
 - l. Replacing the words "Map 9" with the words "Map 9A" after the word "on" and before the word "is";
 - m. Adding the words "or hydrologic" after the word "heritage" and before the word "value".
15. Section 3.4, The Natural Environment, non-policy text, paragraph five is amended by:
- a. Replacing the word "three" with the word "five" after the word "than" and before the word "million";
 - b. Adding the words "help to address climate change through carbon sequestration," after the word "They" and before the word "provide";
 - c. Adding the words "improve water filtration," after the word "air," and before the word "contribute";
 - d. Adding the words "Toronto has a target of 40% tree canopy cover." after the word "canopy." and before the word "We";
 - e. Adding the words "species of" after the word "and" and before the word "trees";
16. Section 3.4, The Natural Environment, non-policy text, paragraph six is amended by:
- a. Adding the words "Toronto's natural heritage system, water resource system, and urban forest play a critical role in addressing climate change and building resilience by offsetting greenhouse gas emissions and acting as carbon sinks." Before the word "Protecting";
 - b. Adding the words "and considering vulnerabilities to climate change. New development within contributing areas as shown on Map 9A should demonstrate a net increase in ecological function and /or biodiversity on the development site" after the word "environment" and before the word "We".

17. Section 3.4, The Natural Environment, non-policy text is amended by adding the following non-policy text after existing paragraph six as follows:
- "Waste reduction activities and greenhouse gas emissions reductions can simultaneously achieve the same goals. The City's environmental goals will be supported by reducing waste through the design process of new development, as well as by increasing waste diversion from landfill. This Plan encourages programs that: reduce, reuse, and recycle waste; as well as, identify opportunities for resource recovery, including food and organic waste diversion. Planning principles that support a circular economy, sustainable consumption and waste reduction, will in turn support the natural environment and contribute to thriving, sustainable, and equitable communities."
18. Section 3.4, The Natural Environment, non-policy text, existing paragraph 7 is amended by:
- a. Replacing the words "system shown on Map 9 is one layer and hazard lands" with the words "and water resource systems shown on Map 9A, 9B, and 9C should be considered together with the natural hazards" after the word "heritage" and before the word "regulated";
 - b. Deleting the words "are another" after the word "Authority" and before the word "In".
19. Section 3.4, The Natural Environment, existing Policy 1 is amended by adding the words "sustainable, low carbon, and resilient to climate change" after the word "friendly," and before the word "based".
20. Section 3.4, The Natural Environment, existing Policy 1 a) is amended by:
- a. Replacing the words "and groundwater infiltration and flows" with the words "and encouraging infiltration of water where feasible;" in existing sub-policy 3.4.1. a) iii;
 - b. Adding the following new sub-policies after existing policy 3.4.1 a) iii. as follows:
 - iv. minimizing the extraction and discharge of clean groundwater into the City's sewer system;
 - v. minimizing the use of road salt; and applying practices that reduce impacts on groundwater and surface water quality, and aquatic organisms, and aquatic habitat;"
 - c. Adding the following new sub-policy after existing sub-policy 3.4.1 a) iv., renumbered as sub-policy 3.4.1 a), vi. as follows:

"vii. utilizing best practices for the management and reuse of excess soil generated and fill received during development and infrastructure projects;"

- d. Deleting the word "and" after the word "light;" in existing sub-policy 3.4.1 a) v., renumbered as sub-policy 3.4.1 a) viii.;
- e. Adding the following new sub-policies after existing policy 3.4.1 a) vi., renumbered as sub-policy 3.4.1 a) ix. as follows:

"x. minimizing hazards to local and migratory birds;

xi. maintaining pervious area where possible and identifying opportunities to reduce impervious area through redevelopment, and prioritizing green infrastructure; and

xii. avoiding or minimizing infrastructure within valley lands and ravines, and appropriately sizing and locating crossings to protect natural heritage and hydrological features and maintain ecological connectivity."

21. Section 3.4, The Natural Environment, existing Policy 1 c) is amended by:

- a. Replace the word "and" with a comma after the word "landfill" and before the "by" in sub-policy i.;
- b. Adding the words ": circular economy principles; and" after the word "promoting" and before the word "programs" in sub-policy i.;
- c. Replacing the words "and composing;" with the words ", food and organic waste diversion, and resource recovery;" in sub-policy i.;
- d. Adding the word "fossil" after the words "carbon-based" and before the word "fuels" in sub-policy iv.;
- e. Adding the word "and" after the word "energy;" in sub-policy iv.;
- f. Adding new sub-policy v. after existing sub-policy iv. as follows:

"v. the amount of energy and emissions-intensive materials in new construction."

22. Section 3.4, The Natural Environment, existing Policy 1 d) is amended by:

- a. Adding the words ", including adequate soil volumes" after the word "tree" in sub-policy i.;

- b. Adding the words "especially of long-lived native and large shade trees with an emphasis on increasing tree canopy distribution and" after the word "coverage" and before the word ", and" in sub-policy ii.;
 - c. Adding the words "in areas of the city with lower tree canopy coverage" after the word "diversity" and before the word ", especially" in sub-policy ii.;
 - d. Deleting the word "and" after the word "trees;" in sub-policy ii.;
 - e. Deleting the words "especially of long-lived native and large shade trees" after the word "diversity" in sub-policy ii.;
 - f. Adding the words ", and protecting mature and native trees; and" after the word "trees" in sub-policy iii.;
 - g. Adding a new sub-policy iv. after existing sub-policy iii. as follows:
 - "iv. supporting the health of street trees to grow to maturity."
23. Section 3.4, The Natural Environment, existing Policy 1 e) is amended by:
- a. Adding a colon after the word "with", and adding a semi-colon after each of the words "flooding", "unstable slopes", "erosion and contaminated lands";
 - b. Adding the words "extreme heat;" after the word "flooding;" and before the word "unstable";
 - c. Deleting the words "and considering the potential impacts of climate change that may increase the risk associated with natural hazards;".
24. Section 3.4, The Natural Environment is amended by:
- a. Adding new sub-policy f) after existing policy 3.4.1 e) as follows:
 - "f) reducing vulnerabilities to the impacts of climate change that may increase the risk associated with these natural hazards;"
 - b. Replacing the word "promoting" with the word "providing" in existing sub-policy 1. h), renumbered as sub-policy 1. i);
 - c. Replacing the words "Map 9" with the words "Map 9A" after the word "on" and before the word "Where" in existing policy 11;
 - d. Deleting the words "wetlands and" after the word "including" and before the word "wildlife" in existing sub-policy 13. a);
 - e. Replacing the words "known watercourses and" with the word "key" before the word "hydrologic" in existing sub-policy 13. b);

- f. Adding the words "features and" after the word "hydrologic" and before the word "functions" in existing sub-policy 13. b);
- g. Deleting the words "and features" after the word "functions" in existing sub-policy 13. b);
- h. Deleting the words "aquatic features and functions including" before the words "the shoreline" in existing sub-policy 13. g);
- i. Adding new policy 14 after the existing policy 13 as follows:
 - "14. New development within contributing areas as shown on Map 9A should demonstrate a net increase in ecological function and biodiversity on the development site; such as, but not limited to, maintaining and enhancing existing tree canopy and soft landscaping, and encouraging other green infrastructure measures."
- j. Replacing the number "12" with the number "13" in existing policy 14, renumbered as policy 15;
- k. Adding the words " achieve a net zero emissions" after the word "that" and before the word "built" in existing sub-policy 19. d);
- l. Adding the words "connecting to and" before the word "establishing" in existing sub-policy 19. d) i.;
- m. Adding the words "and geothermal" after the word "power," in existing sub-policy 19. d) ii.;
- n. Replacing the words "recycling and other innovative management technologies and practices." with the words "reuse, and diversion from landfill, including: allocating space for recycling, food and organic waste diversion, and additional waste streams (e.g. household hazardous and electronic waste); construction and demolition material recovery; and other innovative management technologies and practices." after the word "reduction" in existing sub-policy 19. e);
- o. Adding a new policy 25 after existing policy 23, renumbered as policy 24 as follows:
 - "25. Watershed planning and waterfront planning initiatives will consider the Great Lakes Strategy, the targets and goals of the *Great Lakes Protection Act*, and any applicable Great Lakes agreements."
- p. Adding the following new sidebars:
 - "Best Practices for Management and Reuse of Excess Soil**

The Province regulates excess soil generated and fill received from construction and infrastructure projects to protect health and the environment and ensure valuable resources do not go to waste. The quality of fill received or placed at a site cannot cause an adverse effect on the current or proposed use of the property or the natural environment and must be compatible with adjacent land uses. To support the regulation of excess soil, the Province has developed best practices for the proper management of excess soil to ensure, to the extent possible, that excess soil is reused and that sites for excess soil storage and processing are located close to the proposed development or areas of potential soil reuse. Where feasible, excess soil reuse planning should be undertaken concurrently with development planning and design. The City may develop excess soil reuse strategies as part of planning for growth and development.

Contributing Areas

Contributing areas are illustrated on Map 9A. They are mostly located outside of existing natural areas and within developed areas. Contributing areas support Toronto's ecosystems and natural heritage features and functions. They provide opportunities for habitat connectivity and natural linkages across the city; they include habitat areas that are highly suitable for birds; and/or they contribute to groundwater systems that support sensitive areas like wetlands and cold water streams. These are areas where efforts should be made to protect and enhance ecological function and biodiversity by maintaining and enhancing existing tree canopy and soft landscaping, and encouraging other green infrastructure measures. Contributing areas are identified using field research and modelling, and will continue to be refined in consultation with the TRCA.

The Water Resource System

The water resource system consists of key hydrologic features and key hydrologic areas as defined in the Growth Plan for the Greater Golden Horseshoe and the Provincial Policy Statement. Toronto's water resource system is illustrated on Maps 9B and 9C which are not statutory maps.

The key hydrologic features illustrated on Map 9B include permanent and intermittent streams; inland lakes and littoral zones; seepage areas and springs; and wetlands. These hydrologic features are also part of the natural heritage system shown on Map 9A.

The key hydrologic areas illustrated on Map 9C contribute to the hydrologic function of the watershed and may overlap with the natural heritage system. They help maintain ground and surface water quality and quantity by collecting, storing and filtering rainwater and overland flow, recharge aquifers and feed downstream tributaries, lakes, wetlands and discharge areas. Ecologically Significant Groundwater Recharge Areas directly support sensitive areas such as cold water streams and wetlands; Significant Groundwater Recharge Areas are found where groundwater is

replenished through the infiltration of water; and Highly Vulnerable Aquifers are areas underground that contain water that is being withdrawn for human use. Significant Surface Water Contribution Areas are areas that are significant to the overall surface flow volumes within a watershed.

Historical Watercourses

Urbanization has resulted in extensive creek burial and diversion of water flows into sewers leading to extensive changes to natural drainage patterns, and hydrological and ecological functions. The loss of natural creeks in Toronto began in the 18th century and accelerated with increased development during the 19th and 20th centuries. These buried or lost features are referred to as historical water courses. Extensive and well documented mapping work has been done to identify the location of historical water courses in Toronto, mainly by community organizations such as the Toronto Green Community's Lost Rivers group. Restoration or daylighting historical watercourses is associated with positive outcomes such as restored hydrological or ecological functions and community engagement. Opportunities to restore or daylight historical watercourses on public parklands or as part of redevelopment should be considered where there is an opportunity and it is technically feasible.

Credit Valley-Toronto and Region-Central Lake Ontario (CTC) Source Protection Plan

The Credit Valley, Toronto and Region and Central Lake Ontario (CTC) Source Protection Plan (SPP) as approved by the Ministry of Environment, Conservation and Parks aims to provide direction to protect existing and future municipal drinking water sources and assists with implementing directions under the Clean Water Act.

Policies within this plan encourage municipalities to mitigate the effect of road salt application in development that includes new roads and parking lots. Design measures, salt management plans, and a reduction in the future use of salt in source water areas, such as Highly Vulnerable Aquifers (HVAs) are encouraged."

- q. Delete the existing sidebar entitled "Climate Change Emergency";
- r. Adding the following sentence at the end of the existing sidebar on "Biodiversity":

"Toronto's Biodiversity Strategy aims to support healthier, more robust biodiversity and increased awareness of nature in Toronto."
- s. Revising the sidebar entitled "The Natural Heritage System and Inventory" as follows:
 - i. Adding the words "natural heritage and key hydrologic" after the word "following" and before the word "features";

- ii. Replacing the existing second bullet with the following:

"key hydrologic features and functions, including permanent and intermittent streams; inland lakes and their littoral zones; seepage areas and springs, and wetlands;"
 - iii. Replacing the existing sixth bullet with the following:

"the shoreline of Lake Ontario;"
 - iv. Replacing the word "biological" with the words "natural heritage and hydrologic" after the word "significant" and before the word "features" in the existing eighth bullet;
 - v. Adding the words "and Provincially Significant Wetlands" after the word "Interest" in the existing eighth bullet;
 - vi. Replacing the words "Map 9" with the words "Maps 9A" in the first paragraph;
 - vii. Adding the words "and hydrologic" after the word "heritage" and before the word "features" in the first paragraph;
 - viii. Adding the words ", and associated natural hazards" after the word "features" and before the word "on" in the first paragraph;
 - ix. Replacing the words "Most provincially significant wetlands and areas of natural and scientific interest" with the words "Provincially Significant Wetlands and Areas of Natural and Scientific Interest" after the words "Map 12A." and before the word "that" in the third paragraph;
 - x. Replacing the words "Policy 12" with the words "Policy 13" after the word "in" and before the word "Further" in the third paragraph.
- t. Revising the sidebar entitled "Buffers" as follows:
- i. Deleting the words "Buffers may extend beyond lands required to set back development from natural hazards." after the word "development." And before the word "Lands";
 - ii. Deleting the words "Buffer widths may be greater than set-backs required from hazard lands." after the word "development." and before the word "Where";
 - iii. Replacing the words "Guidelines will be established to assist in identifying buffer widths" with the words "In general, buffer widths should be at least 10 metres from the limit of the natural feature. In the

case of wetlands, the buffer widths should be at least 30 metres from the limit of the wetland. Feature limits must be staked in consultation with City and TRCA staff." after the word "study."

- u. Revising the sidebar entitled " The TRCA: The City's Partner in Managing the Natural Environment" as follows:
 - i. Replacing the word "TRCA" with the words "Toronto and Region Conservation Authority (TRCA)" after the word "The" and before the word "was";
 - ii. Adding the words "and has identified the City's water resources system," after the word "Study" and before the word "which";
 - iii. Replacing the word "provided" with the word "provides";

Chapter 4, Land Use Designations

25. Section 4.2, Apartment Neighbourhoods is amended by adding new policy 6 after existing policy 5 as follows:

"6. All proposed development on a site with an existing building subject to demolition should be evaluated to: identify opportunities for reuse of demolition waste; and assess embodied emissions from materials.

To assist this evaluation, a study may be required in accordance with guidelines established for this purpose."

26. Section 4.4, Utility Corridors, existing policy 6 is amended by deleting the word "Map 9" and replacing it with the word "Map 9A" after the word "on".

Chapter 5, Implementation: Making Things Happen

27. Section 5.1.3, Site Plan Control, existing sub-policy 3 h) is amended by:

- a. Adding the word "; food" after the word "recycling" and before the word "and";
- b. Adding the words "; and where appropriate, for localized material recovery and reuse, and other waste materials that can be diverted from landfill" after the word "waste" and before the word "to";
- c. Adding a new sidebar entitled "Circular Economy" as follows:

"Circular Economy

A circular economy aims to reduce waste and maximize resources by focusing on keeping materials and products in use for as long as possible. This is a shift away from a linear approach of take-make-dispose, by integrating design principles that focus on longevity, renewability, reuse,

recovery, and/or repair. Planning for a built environment where circular economy principles are at its core can ensure that the planning decisions support the health of ecological systems and contributes to natural process.

Circular economy strategies consider resource consumption and material efficiency for their potential to impact climate change, mitigate environmental degradation, and improve social outcomes. The City of Toronto has developed a Long Term Waste Management Strategy, which identifies an aspirational goal of zero waste and a circular economy, and a Net Zero Strategy, which seeks pathways to more sustainable consumption in City operations and Toronto's economy."

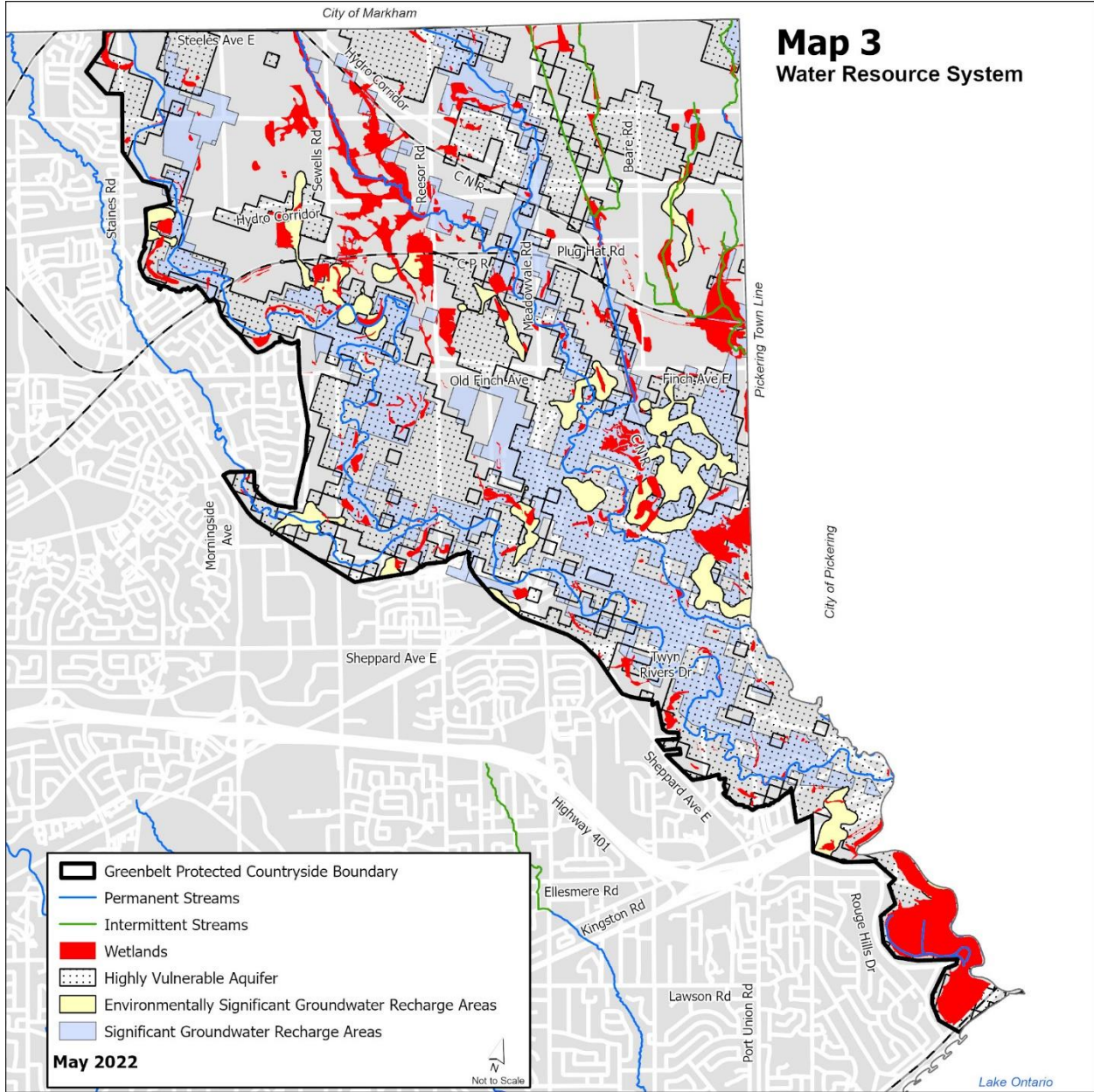
- d. Moving the existing sidebar entitled "Bird-friendly" in Section 3.4, Natural Environment to Section 5.1.3, Site Plan Control;
 - e. Moving the existing sidebar entitled "Light Pollution" in Section 3.4, Natural Environment to Section 5.1.3, Site Plan Control.
28. Section 5.2.1, Secondary Plans, Policy 4 is amended by:
- a. Adding new sub-policy c) after existing sub-policy b) as follows:
 - "c) opportunities to protect, restore, and enhance natural heritage and water resource systems;"
 - b. Deleting the words "including green infrastructure" after the word "services" and before the word ", community" in existing sub-policy g), renumbered as sub-policy f);
 - c. Adding new sub-policy h) and sub-policy i), after existing sub-policy f), renumbered as sub-policy g) as follows:
 - "h) opportunities for stormwater management and locations where the use of green infrastructure can be prioritized;
 - i) constraints and impacts of potential groundwater discharges on servicing capacity and water resources posed by development and area-specific hydrogeological characteristics;"
 - d. Adding the words "reducing greenhouse gas emissions, including embodied emissions from materials," after the word "for" and before the word "energy" in existing sub-policy g), renumbered as sub-policy j);
 - e. Replacing the word "reduction" with the word "management" after the word "demand" and before the word ", reliance" in existing sub-policy g), renumbered as sub-policy j);

- f. Replacing the words "small local integrated energy solutions that incorporate renewables, district energy, combined heat and power or energy storage" with the words "low carbon energy solutions (including district energy systems), and local electricity production and storage" before the word ", through" in existing sub-policy g), renumbered as sub-policy j).
29. Section 5.2.1, Secondary Plans, is amended by adding a new sidebar as follows:
- "Area Based Stormwater Management**
Large scale development proceeding by way of Secondary Plan will be supported by area based stormwater management planning that incorporates an integrated treatment approach, to minimize stormwater flows, and identifies opportunities and constraints for green infrastructure. The approach will be informed by local drainage patterns and outlets, groundwater and hydrogeology, and risks associated with contamination, utility conflicts and flooding. The approach will identify locations where the use of green infrastructure can be prioritized and locations that maximize contributing drainage areas."
30. Chapter 7, Site and Area Specific Policy 141 is amended as follows:
- a. Policy a) iii) is amended by deleting the words "and to implement the Greenbelt Plan";
- b. Policy xiv) is added to Policy b) as follows:
- "xiv) upon lands being transferred to Parks Canada for the Rouge National Urban Park they will become federally administrated and the Rouge National Parks Act and Management Plan will be the guiding documents and the policies in this Site and Area Specific Policy will not apply."
- c. New sub-policy i) is added after existing sub-policy h) as follows:
- "i) Any development permitted within key hydrologic areas will demonstrate that the hydrologic functions of these areas are protected and, where possible, improved or restored, through the identification of planning, design and construction practices and techniques."
- d. "Table 1: Minimum Vegetation Protection Zones for Key Natural Heritage and Key Hydrologic Features", Row 2 is amended as follows:
- i. Delete the words "Significant habitat" and replace it with the word "Habitat";
- ii. Add the word "and" after the word "species" and before the word "threatened";
- iii. Add the words "(including habitat of special concern species)" after the words "wildlife habitat";

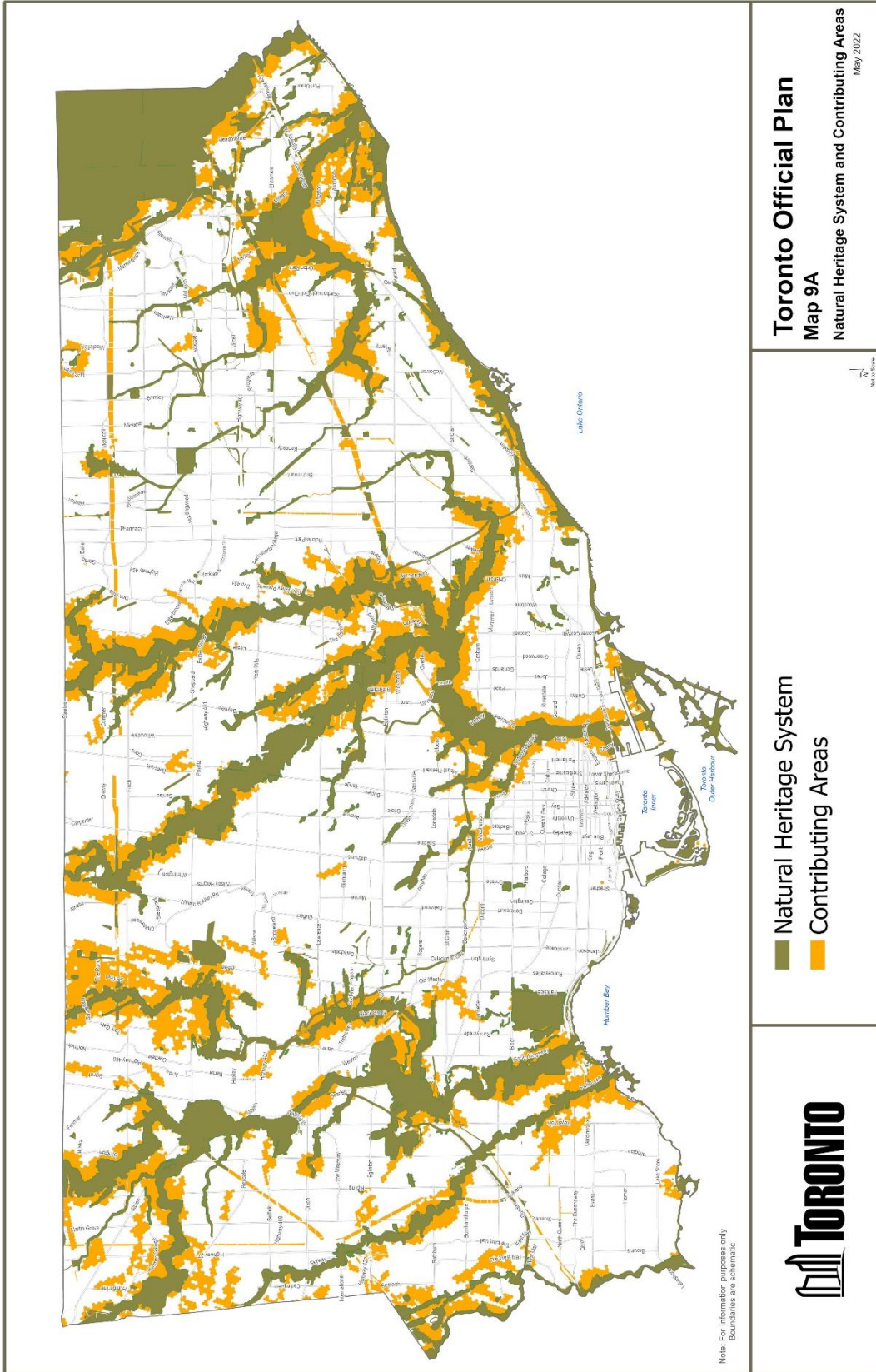
- iv. The words "Sand", "Alvars", and "Environmentally Significant Areas" are deleted and replaced with "sand", "alvars" and "environmentally significant areas" respectively;
 - e. The footnote under Table 1 is amended as follows:
 - i. the words "policy 3.4.13" are deleted and replace with the words "Section 3.4";
 - ii. the words "Environmentally Significant Areas" are deleted and replaced with the words "environmentally significant areas";
 - iii. the word "in" before Map 2 is deleted and replaced with the word "on";
 - iv. the words "and Map 3" are added after the words "Map 2".
 - f. "Map 2: Greenbelt Natural Heritage System" is deleted and replaced with "Map 2, Greenbelt Natural Heritage System, Areas of natural and Scientific Interest and Environmentally Significant Areas" as included in Schedule "1";
 - g. "Map 3: Water Resources System" is added as included in Schedule "2".
31. Map 9, Map 12A and Map 12B are deleted and the following Maps are added:
- a. Map 9A, Natural Heritage System as included in Schedule "3";
 - b. Map 9B, Water Resource System: Key Hydrologic Features as included in Schedule "4";
 - c. Map 9C, Water Resource System: Key Hydrologic Areas as included in Schedule "5";
 - d. Map 12A, Environmentally Significant Areas as included in Schedule "6";
 - e. Map 12B, Provincially Significant Wetlands and Areas of Natural and Scientific Interest as included Schedule "7".
32. Schedule 3 Application Requirements is amended by:
- a. Replacing the words "Map 9" with the words "Map 9A" in the existing "Natural Heritage Impact Study" requirement;
 - b. Replacing the words "Energy Strategy" with words "Net Zero Emissions Strategy" in the existing "Energy Strategy" requirement;

- c.** Replacing the words "Green Development Standards Checklist" with words "Toronto Green Standard Checklist" in the existing "Green Development Standards Checklist" requirement.

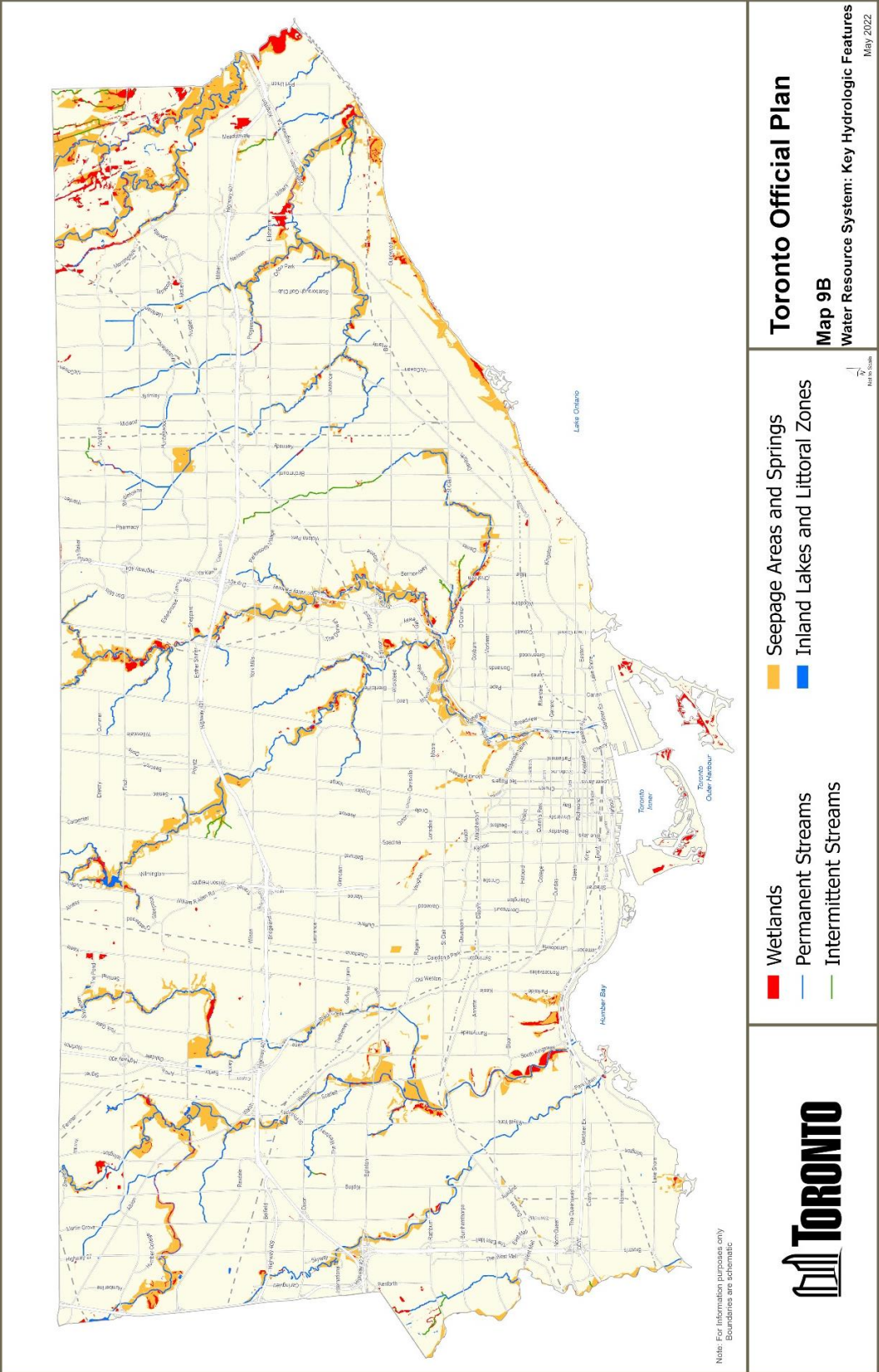
Schedule "2" to Official Plan Amendment 583



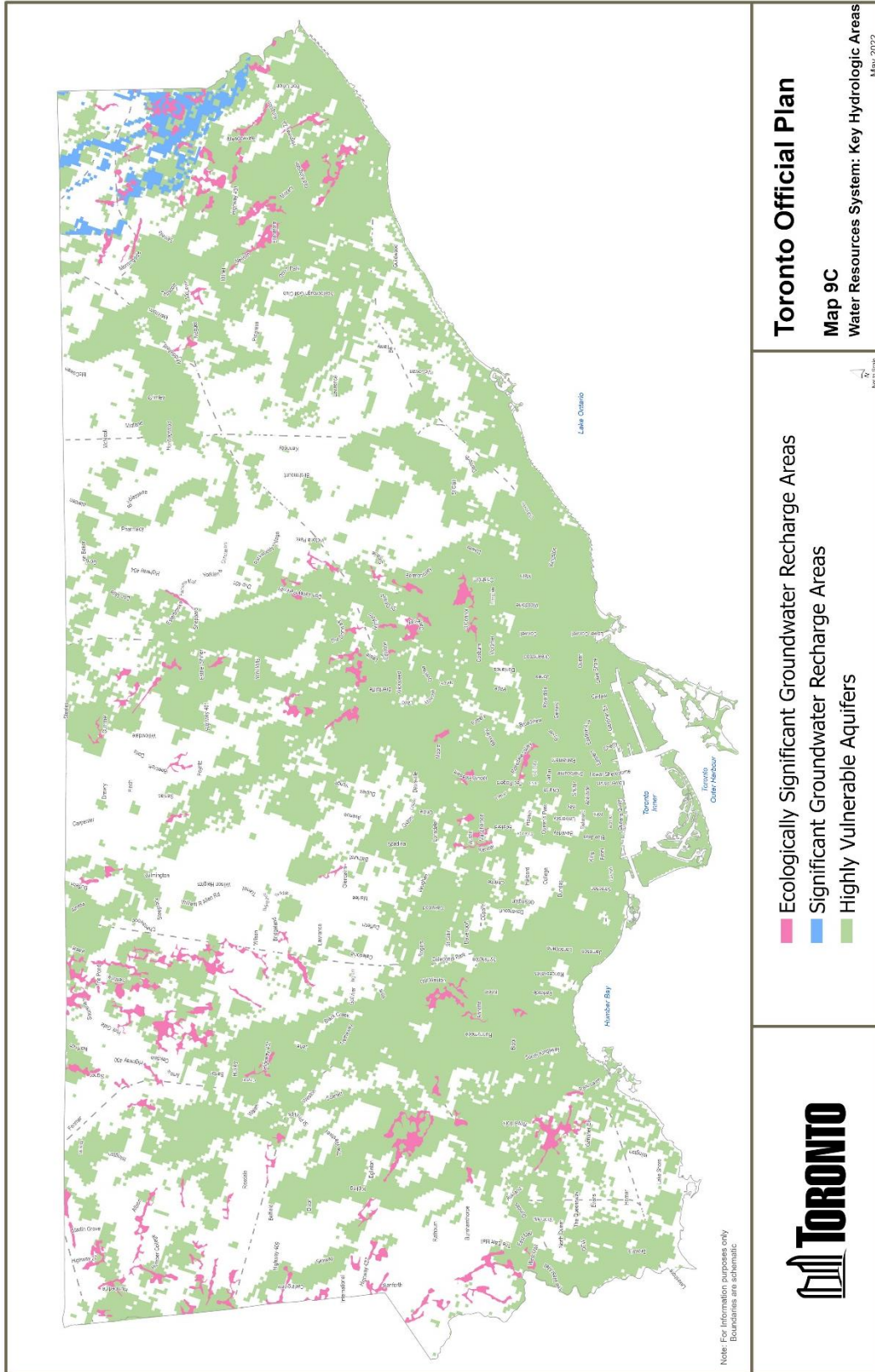
Schedule "3" to Official Plan Amendment 583



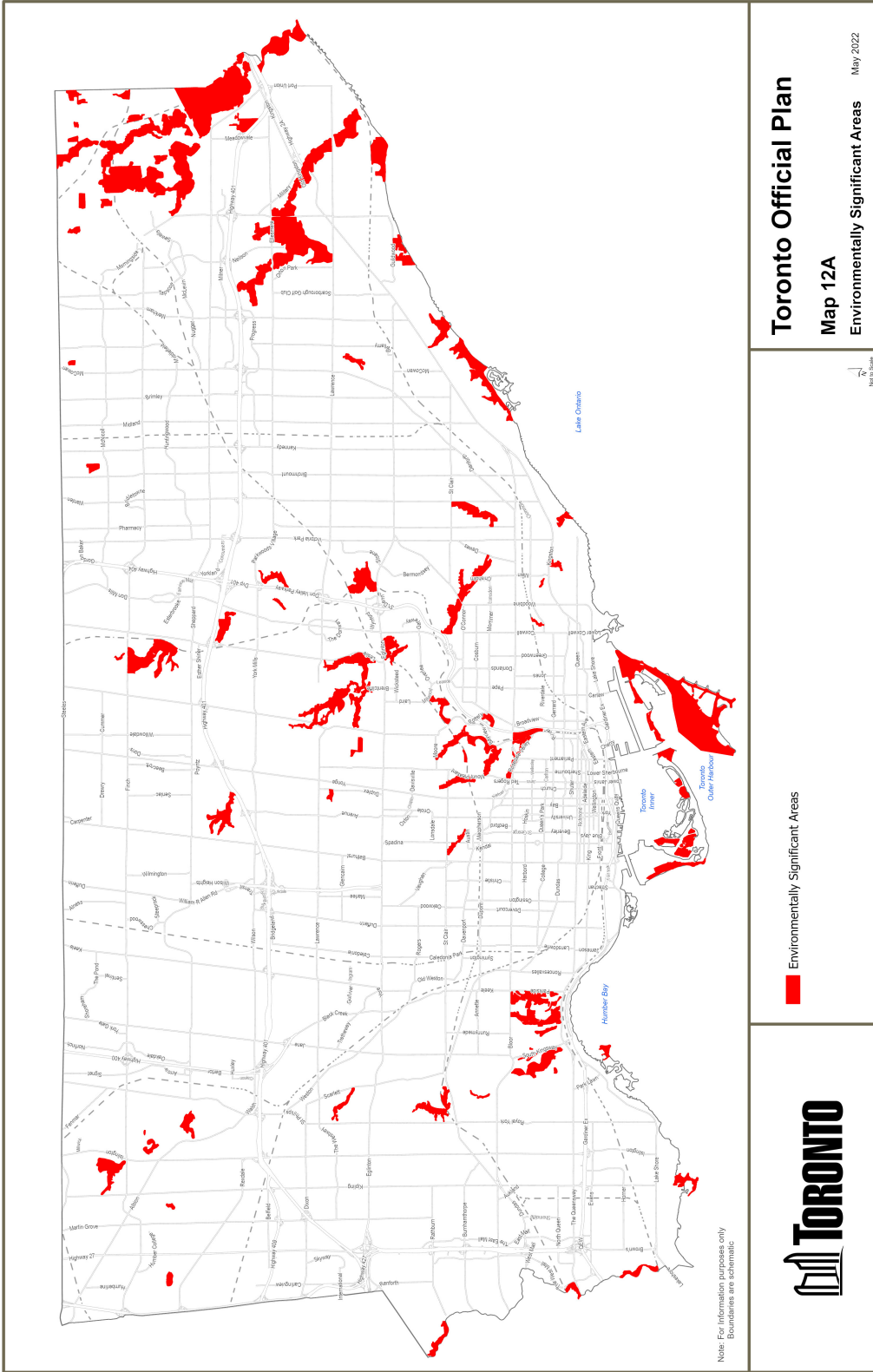
Schedule "4" to Official Plan Amendment 583



Schedule "5" to Official Plan Amendment 583



Schedule "6" to Official Plan Amendment 583



Schedule "7" to Official Plan Amendment 583

