

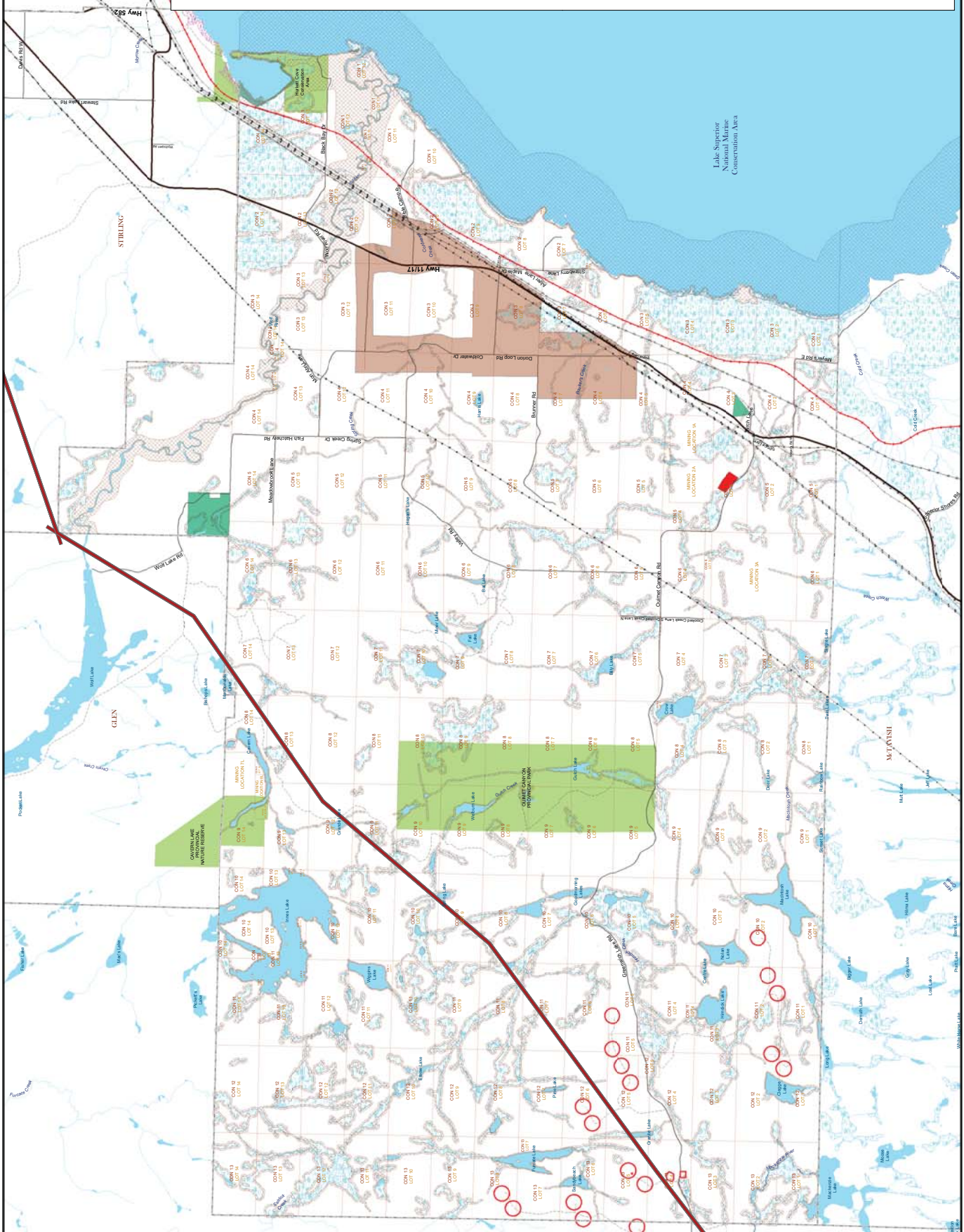


The Township of Dorion 2022 Official Plan Schedule A Land Use Designations

Legend	
	SA - Settlement Area
	EP - Environmental Protection
	WD - Waste Disposal
	RU - Rural
	One-Map By-laws
	ECA Appraisal Regulated Area
	ECA Use Superior Regulated Area
	Administrative
	Township Boundary
	Lot & Concession
	Greenwich Wind Farm
	Drainage
	Waterbody
	Provincially Significant Wetland
	Wetland
	Stream
	Boer
	Road
	Highway
	Road
	Street
	Other
	Utilities
	Transmission Line
	Pipeline
	Railway
	CNE Decommissioned Rail Line
	Transmission Line Corridor



This publication was produced by the Township of Dorion, 190 Concession R.O., Thoresen Bay, ON, P7B 4T8.
Basic data used herein through the courtesy of the Ministry of Energy, Northern Development and Mines, the Ministry of Environment, Conservation and Forestry, the Ministry of Agriculture, Food and Rural Affairs, and the Ministry of Transportation.
Dorion, 190 Concession R.O.
Project No. 2022-01
Printed on January 20, 2022
Copyright 2022, L.R.C.A.





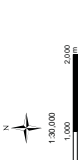
The Township of Dorion 2022 Official Plan Schedule B1

Development Constraints

Legend

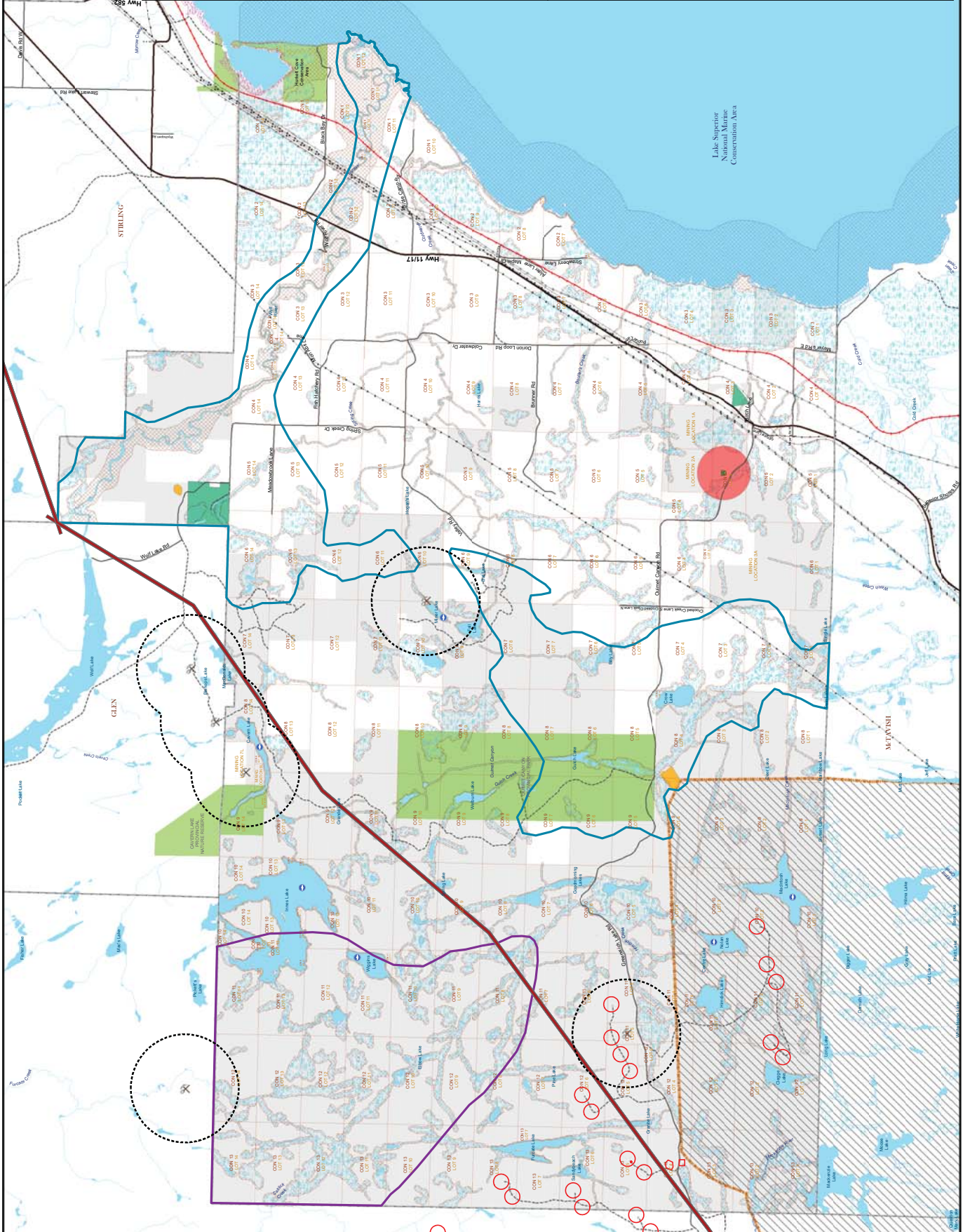
- Development Constraints**
 - Concession Areas, Provincial Parks
 - Pre-2014 "Unapproved" Areas
 - LRCA "Approved" Areas
 - LRCA "Superior Regulated Area"
 - Enhanced Management Area
 - Greenwich West Farm
 - Designated Late Trout Lake
 - Mineral Waste Disposal - 500m Waste Disposal Site
 - Constant Buffer
 - Aggregate Site - Active
 - Quarry
 - Both (Pit and Quarry)
 - Mining & Aggregates
 - Aggregate Potential
 - Unsure Potential
 - Mineral Deposits
 - Abandoned Mines
 - Abandoned Mines - Iron Buffer
- Administrative Features**
 - Township Boundary
 - Lot & Concession
 - Crown Land
 - Drainage
 - Waterbody
 - Wetland
 - Privately Significant Wetland
- Roads**
 - Highway
 - Road
 - Street
 - Other
- Utilities**
 - Transmission Line
 - Pipeline
 - Railway
 - CHS Decommissioned Rail Line
 - East-West Tr. Transmission Line Corridor
- Other**
 - Stream
 - River
 - Watercourse
 - Designated Late Trout Lake
 - Mineral Waste Disposal - 500m Waste Disposal Site
 - Aggregate Site - Active
 - Quarry
 - Both (Pit and Quarry)
 - Mining & Aggregates
 - Aggregate Potential
 - Unsure Potential
 - Mineral Deposits
 - Abandoned Mines
 - Abandoned Mines - Iron Buffer

* Historically identified on 2015 Mapping, Not from Provincial Database.

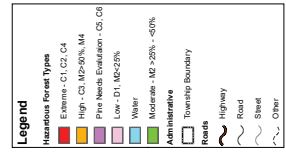


This publication was produced by the Township of Dorion, 190 Concession R.C., Thunder Bay, ON, P7B 6T8. Base data used herein through the courtesy of the Ministry of Energy, Northern Development and Mines. The Ministry of Energy, Northern Development and Mines provides information to the public for informational purposes only. It is not intended to be used for navigation.

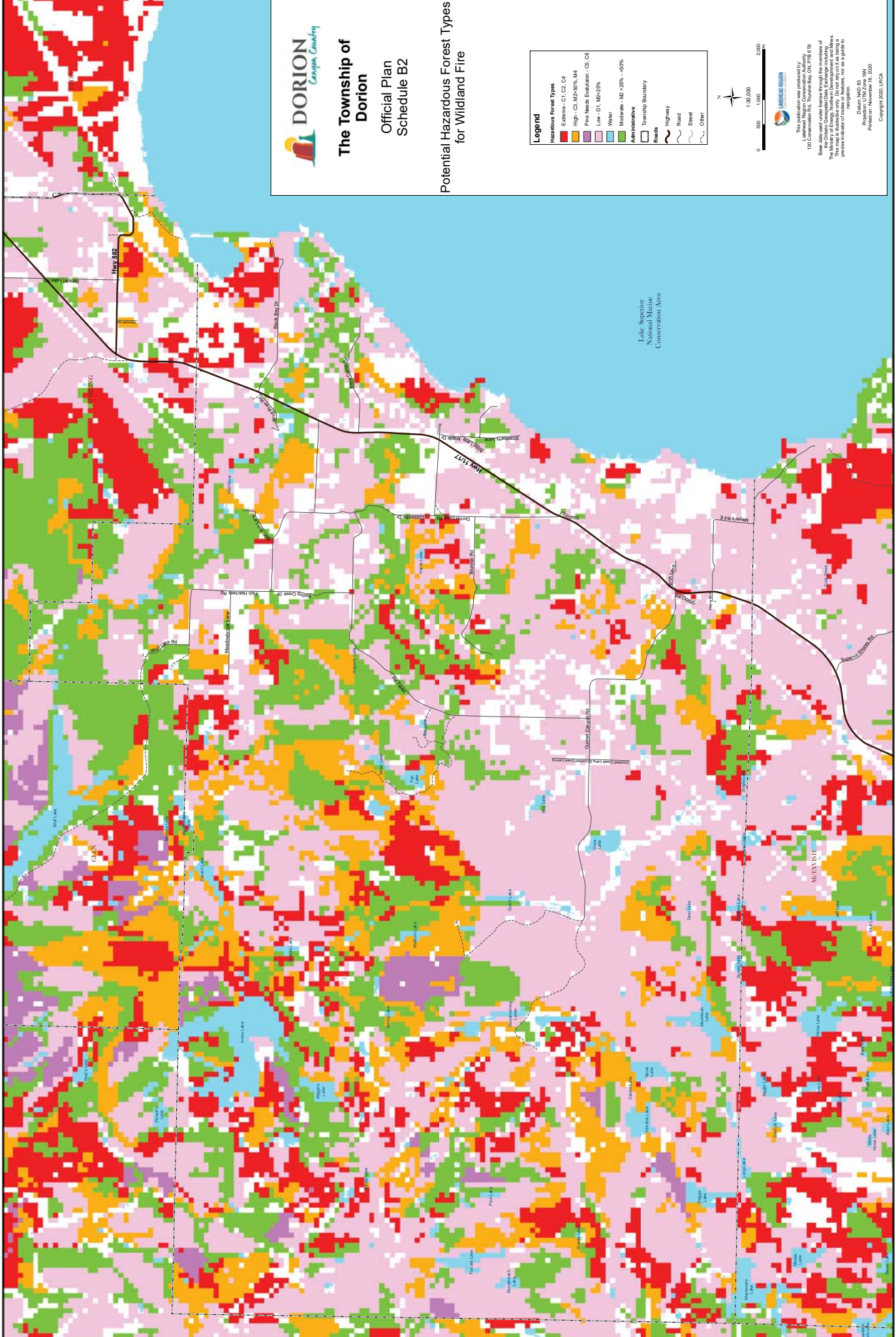
Dorion TWD 2022
Project No. 2022-001
Printed on January 19, 2022
Copyright 2022, LRCA



Potential Hazardous Forest Types
for Wildland Fire




 This publication was produced by
 Landscape Region
 150 Cameron Rd. S. Thunder Bay, ON P7B 6T8
 Base data used under license through the members of
 the Ontario Land Information Institute (OLII) from the
 Ministry of Energy, Northern Development and Mines.
 The Ministry of Energy, Northern Development and Mines
 does not assume any liability for the use of the data or
 information presented in this report or for any errors or
 omissions that may appear in the publication.
 Dorion M20 20
 Project # November 18, 2020
 Copyright 2020, LRI/CA



File: Z:\GIS\Projects\MapServer\MapServer\03\Map1_2_Country_Potential_Forest_Type.aprx