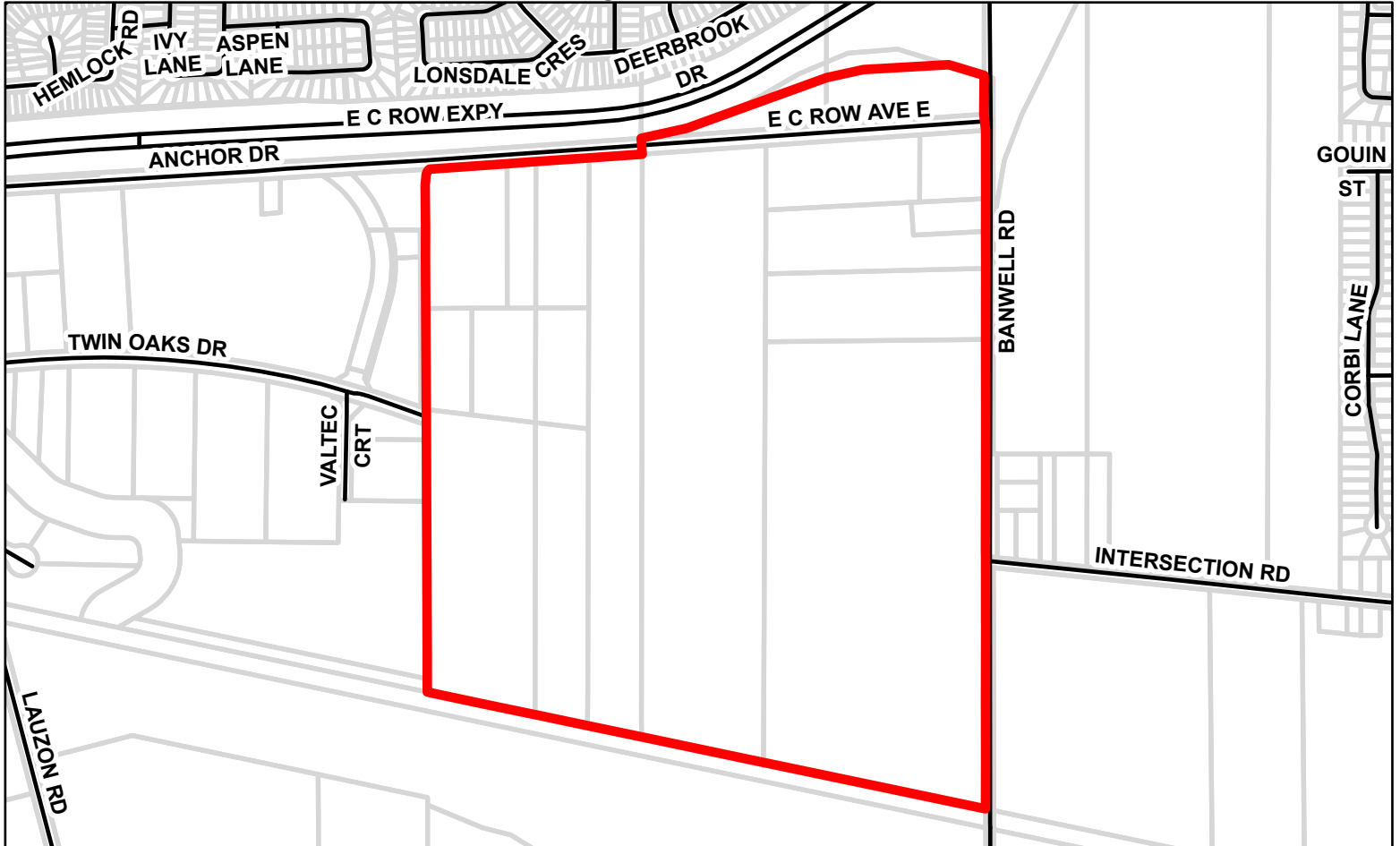


**Part of Lots 139-141, Concession 3, MCNIFF (Sandwich East);
 Part of the Road Allowance Between Concession 2 and 3;
 Part of Lots 141 to 143, Concession 2, (Sandwich East);
 Part of Lots 10 to 12 on Plan 62; and Lots 14 to 19,
 and Part of Lots 12, 13, 20 and 21 on Plan 65 (Sandwich East),
 City of Windsor**



MAP NO. 308

Map filed at the office of the Ontario Ministry of Municipal Affairs and Housing, 777 Bay St., Toronto, Ontario,




Planning Act

Ontario Regulation:

Date:

Original Signed By:

LEGEND

-  Roads
-  Parcels
-  Subject Lands



Map North (Degrees):
9°E

0 100 200 400



Metres

1 cm equals 110 metres

Map Description:

This is map no. 308 referred to in a Minister's Zoning Order. It shows lands which are located in, Part of Lots 139-141, Concession 3, MCNIFF (Sandwich East); Part of the Road Allowance Between Concession 2 and 3; Part of Lots 141 to 143, Concession 2, (Sandwich East); Part of Lots 10 to 12 on Plan 62; and Lots 14 to 19, and Part of Lots 12, 13, 20 and 21 on Plan 65 (Sandwich East), City of Windsor.

We are committed to providing accessible customer service (<https://www.ontario.ca/page/accessible-customer-service-policy>).

On request, we can arrange for accessible formats and communications supports. Please contact MMAH by email (mininfo@ontario.ca) for regulation details.

THIS IS NOT A PLAN OF SURVEY
 Information provided by the
 Ministry of Municipal Affairs and Housing,
 under licence with the
 Ministry of Natural Resources.
 © 2022, Queen's Printer for Ontario.