

59-C-220241

DETAIL PLAN  
Scale: 1 inch = 50 Feet

PLC. 37445

PLAN 48R-2539

PLAN AND FIELD NOTES OF  
LOCATION GW 301  
BEING  
PART OF LOTS 12 and 13, CONCESSION II, SOUTH RANGE  
PART OF BLOCK A, PLAN SM-250  
TOWNSHIP OF HALKIRK  
AND  
PART OF THE BED OF RAINY LAKE  
DISTRICT OF RAINY RIVER  
G.J. WEDGEMAN, O.L.S.  
1986

RECEIVED AND DEPOSITED  
24/1/87  
10421  
FOR THE LAND TITLES  
DIVISION OF  
RAINY RIVER

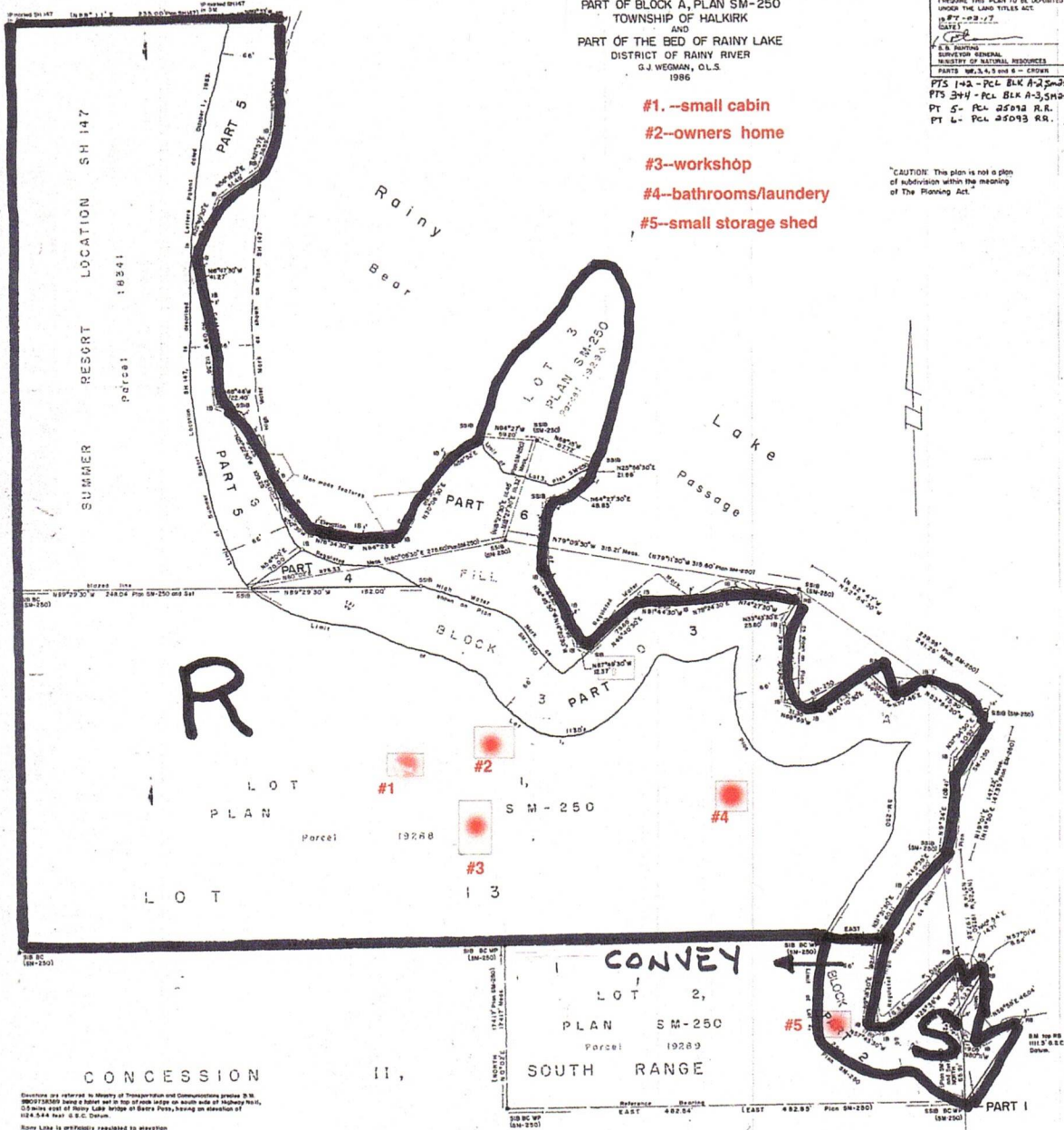
I HEREBY THIS PLAN TO BE DEPOSITED  
UNDER THE LAND TITLES ACT  
IN #7-02-17  
DATE

G.J. WEDGEMAN  
SURVEYOR GENERAL  
MINISTRY OF NATURAL RESOURCES

PARTS 1, 2, 3, 4, 5 and 6 - Crown  
PTS 1-2 - PCL 2503 RR  
PTS 3-4 - PCL 2504 RR  
PT 5 - PCL 2504 RR  
PT 6 - PCL 2503 RR

- #1 --small cabin
- #2--owners home
- #3--workshop
- #4--bathrooms/laundry
- #5--small storage shed

CAUTION: This plan is not a plan  
of subdivision within the meaning  
of The Planning Act.



Structure are referred to Ministry of Transportation and Communications under the  
1987/1988 Survey of Lakes and in top of rock ledge on south side of Highway 147,  
0.5 miles east of Rainy Lake bridge at Bear's Pass, having a station of  
102.44 from U.S.C. Datum.

Rainy Lake is approximately regulated to elevation  
1028.1 feet B.C.S. Datum.

LEGEND  
B denotes survey monument found  
C denotes survey monument set  
SC denotes iron pipe  
A.M. denotes bench mark  
M denotes monument  
W.P. denotes wood post  
I.P. denotes iron pipe

AREA PART 1 - 0.04 ac PART 2 - 0.10 ac  
PART 3 - 0.40 ac PART 4 - 0.41 ac  
PART 5 - 1.02 ac PART 6 - 0.47 ac

Boundaries are approximately derived from the south limit of  
Lot 2, Plan SM-250, having a bearing of 042° EAST.

The survey represented by this plan and field notes was  
completed on July 3rd, 1986.

SURVEYOR'S CERTIFICATE  
I hereby certify that this plan and field notes are correct and  
and represent true and actual survey performed under an official  
commission, and that I am an duly qualified person in  
the Province of Saskatchewan.

G.J. WEDGEMAN  
July 1986, 1986

LOT 12