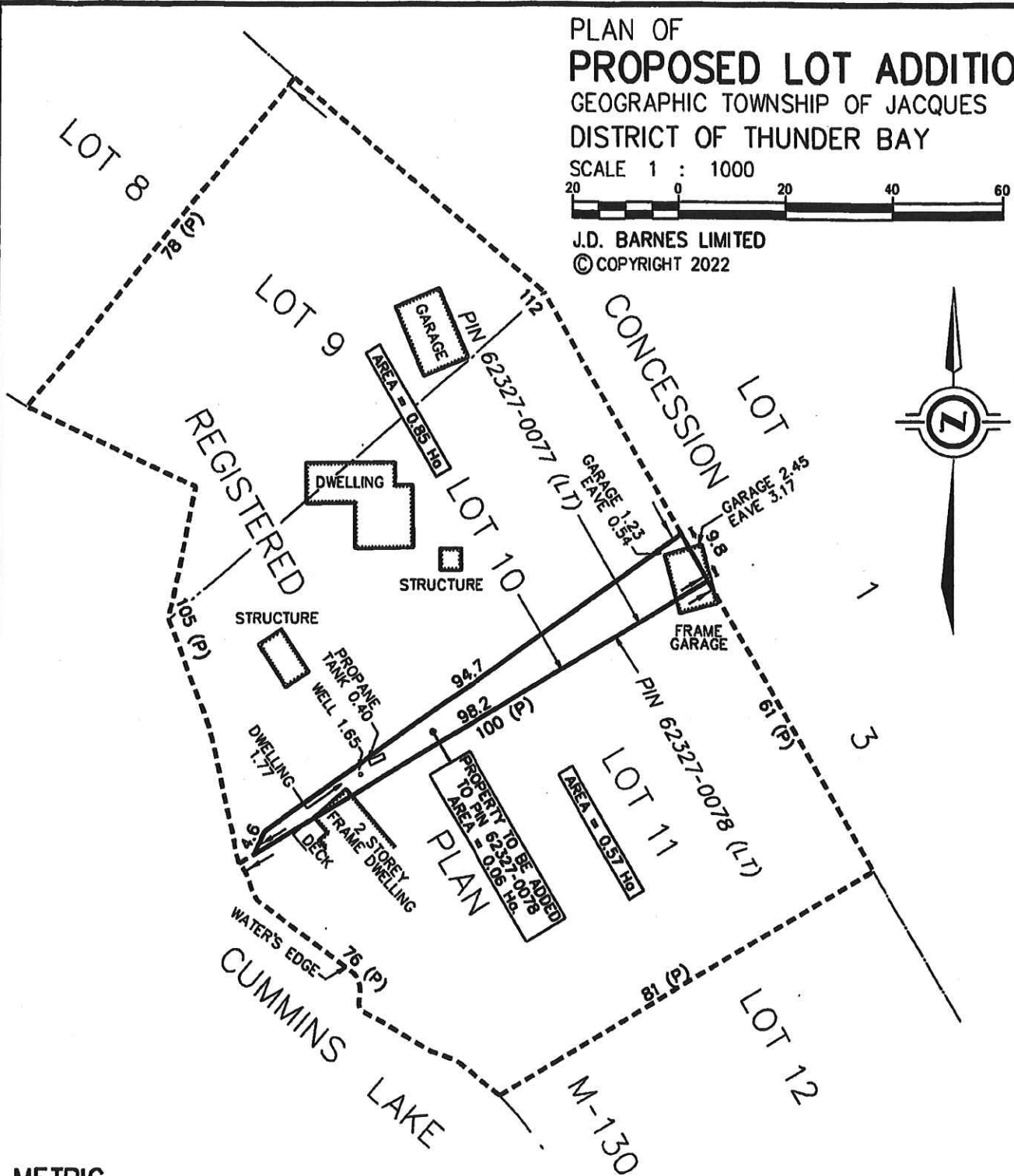


PLAN OF  
**PROPOSED LOT ADDITION**  
 GEOGRAPHIC TOWNSHIP OF JACQUES  
 DISTRICT OF THUNDER BAY

SCALE 1 : 1000



J.D. BARNES LIMITED  
 © COPYRIGHT 2022



**METRIC**

DISTANCES AND/OR COORDINATES SHOWN ON THIS PLAN ARE IN METRES AND CAN BE CONVERTED TO FEET BY DIVIDING BY 0.3048.

AREAS SHOWN ON THIS PLAN ARE IN HECTARES AND CAN BE CONVERTED TO ACRES BY MULTIPLYING BY 2.471.

**CAUTION**

THIS IS NOT A PLAN OF SURVEY AND SHALL NOT BE USED EXCEPT FOR THE PURPOSE INDICATED IN THE TITLE BLOCK.

**LEGEND**

P DENOTES REGISTERED PLAN M-130



**J.D. BARNES**  
 LIMITED

LAND INFORMATION SPECIALISTS  
 1158 RUSSELL STREET, THUNDER BAY, ON P7B 5N2  
 T: (807) 622-6277 F: (807) 626-8040 www.jdbarnes.com

SURVEYING  
 MAPPING  
 GIS

KJ	DRAWN
RK	CHECKED
02/15/22	DATED:
21-32-830-00	Ref. No.

PLOTTED 3/1/2022