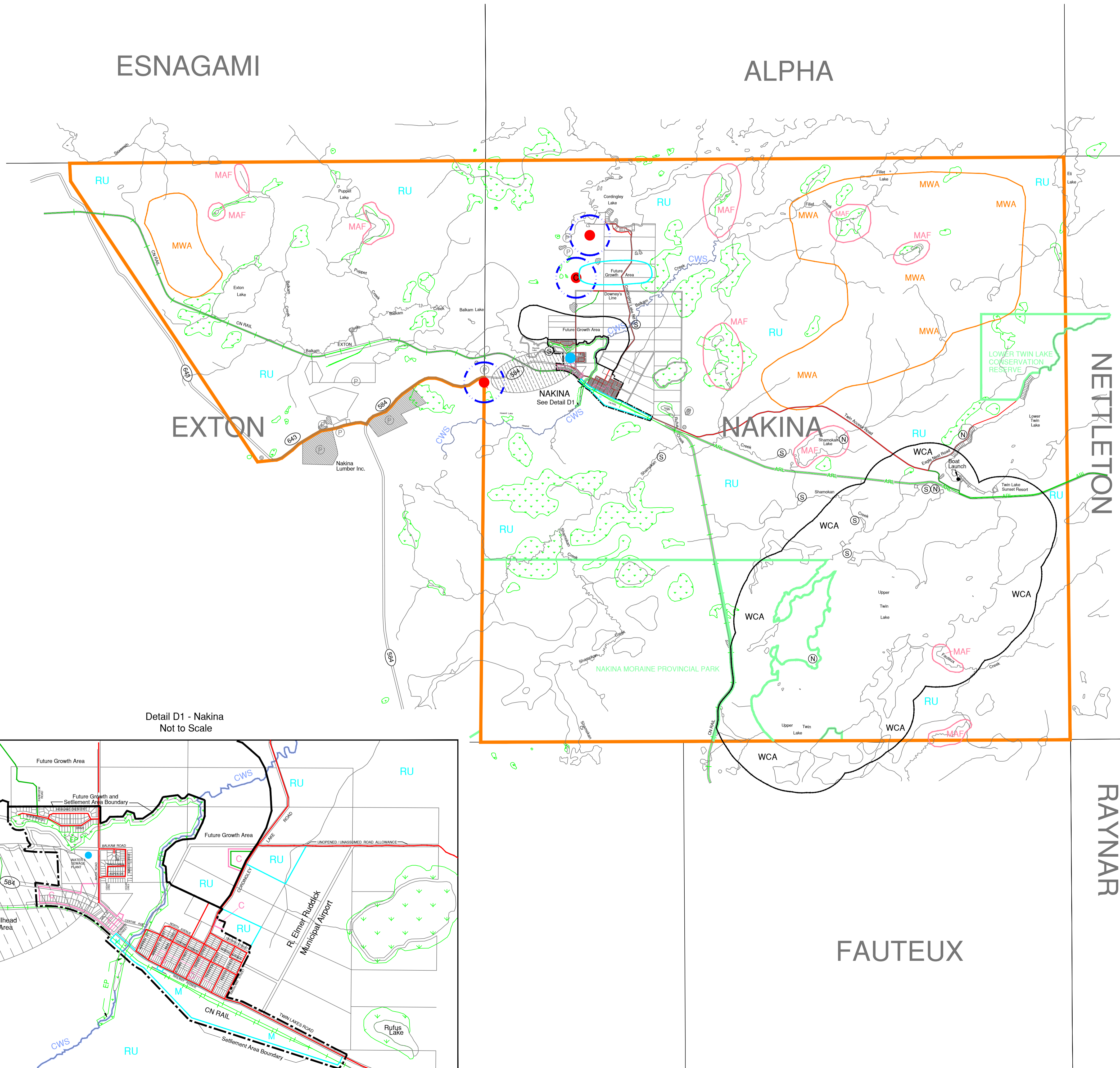
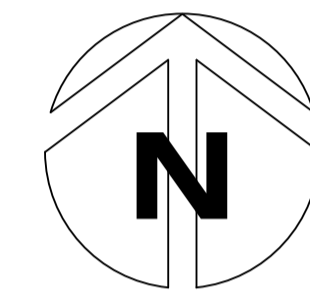
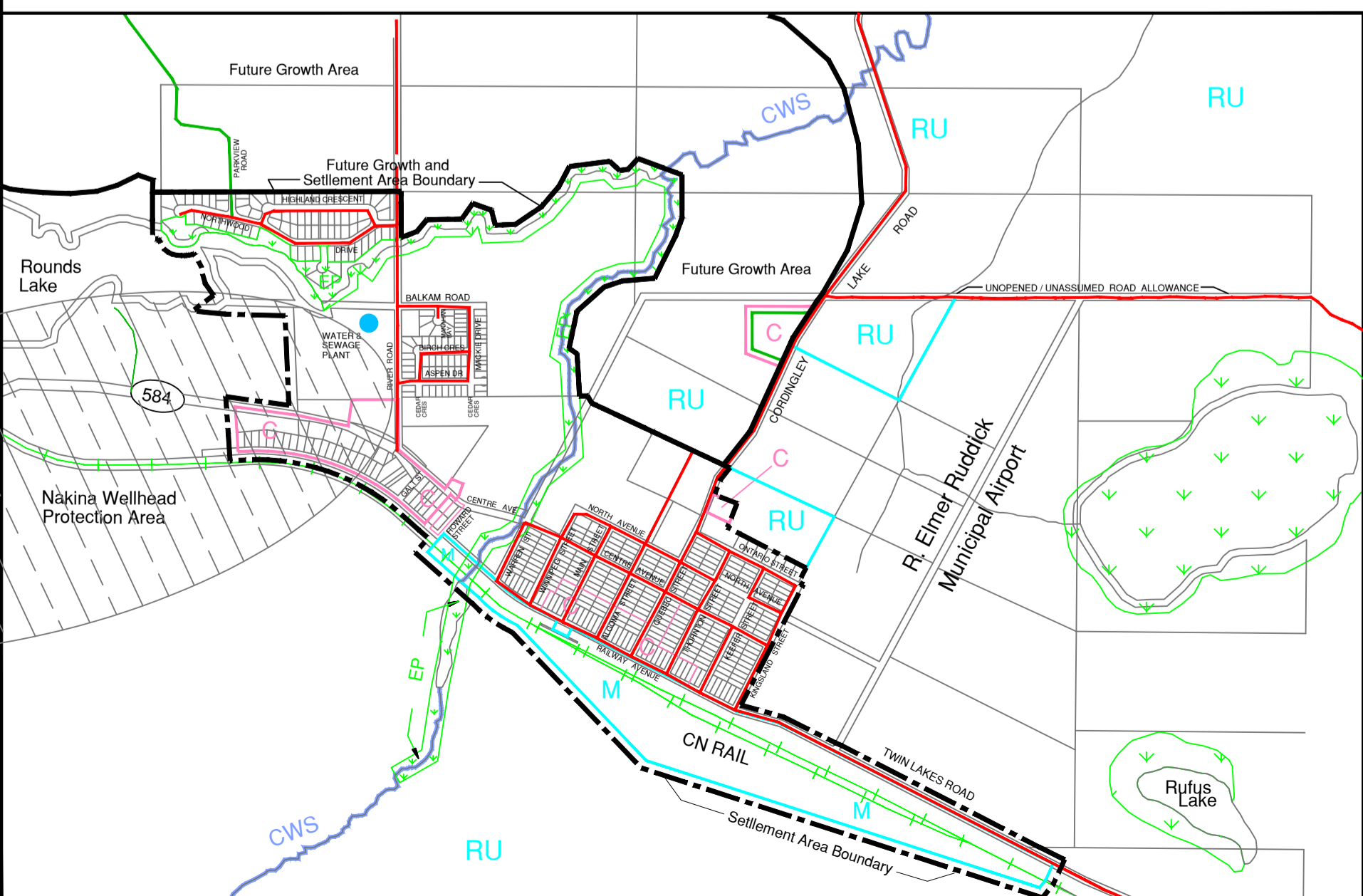


ESNAGAMI

ALPHA



Detail D1 - Nakina  
Not to Scale



**Legend**

- Settlement Area Boundary
- 1. Land Use Districts - Settlement Areas**
- [R] Residential District
- [C] Commercial District
- [M] Industrial District
- [RU] Rural District
- [↓ ER ↓] Environmental Protection Area
- 2. Land Use Districts - Rural Areas**
- [RU] Rural Area
- [A] Airport District
- [↓ ER ↓] Environmental Protection Area
- Waste Disposal Facility (Closed=C)
- 500m Influence Area
- [Hatched] Mineral Aggregate Resources
- [P] Pit
- [Q] Quarry
- [●] Mine Hazards
- [MMO] Mineral Mining Operation
- 3. Future Growth Area**
- Future Growth Area Boundary
- 4. Natural Heritage Features**
- [↓ PSW ↓] Provincially Significant Wetlands
- [↓ ↓] Unclassified Wetlands, includes Unstable or Organic Soils
- [Dashed] Areas of Natural and Scientific Interest (ANSI)
- Fish Habitat**
- [S] Spawning Area
- CWS Cold Water Stream
- Wildlife Habitat**
- [MWA] Moose Wintering Area
- [MAF] Moose Aquatic Feeding Area
- [WCA] Woodland Caribou Area
- [N] Nesting Site
- [WF] High Waterfowl Use Area
- Provincial Park
- 5. Transportation Facilities**
- [584] Provincial Highway
- Municipal Roads
- Year Round Maintained
- Seasonally Maintained
- Unassumed**
- Private Road
- Rail Line
- Abandoned Rail Line
- Trans-Canada Pipeline
- [Hatched] Nakina Wellhead Protection Area
- [●] Sewage Treatment Plant
- 6. Natural and Human Made Hazards**
- Flood Elevation - Long Lake=326.1m (G.S.C.)
- Hardrock Creek=332.5m (G.S.C.)
- Lake Nipigon=260.6m (G.S.C.)
- Kenogamis Lake 331.28m (G.S.C.)
- Flood Fringe

NETTLETON

RAYNAR

FAUTEUX