

# DECISION

**With respect to Amendments 57, 58, 59, 60, 61, 62 and 63 to the  
Haldimand County Official Plan  
Subsection 17(34) of the *Planning Act***

---

I hereby approve, as modified, Amendments 57, 58, 59, 60, 61, 62 and 63 to the Haldimand County Official Plan as adopted by By-law No. 1234-HC/21, as follows,

1. **By-law 1234-HC/21, Text Amendments**, is modified as follows:  
  
Subsections 4 b), 4 d) and 4 e) of Section 2 B. 1) are deleted in their entirety. Subsection 4 c) is renumbered Subsection 4 b).
2. **By-law 1234-HC/21, Text Amendments**, is modified as follows:  
  
The following Section is added as a new text amendment 13.1:  
  
4.B.5 - Excess Lands  
  
Despite anything else in this Plan, development is prohibited on the excess lands identified on Schedule B to the horizon of this Plan.
3. **By-law 1234-HC/21, Map Amendments**, is modified as follows:  
  
Map amendment 1 is deleted and replaced with the following:  
  
Schedule “B.1” of the Official Plan is hereby further amended by identifying the lands shown as Part 1 on Schedule ‘A’ - Map 2 of 4, attached hereto, as “Subject to Section 4.B.5 – Excess Lands”.
4. **By-law 1234-HC/21, Map Amendments**, is modified as follows:  
  
Map amendment 6 is deleted and replaced with the following:  
  
Schedule “B.1” of the Official Plan is hereby further amended by identifying the lands shown as Part 6 on Schedule ‘A’ - Map 2 of 4, attached hereto, as “Subject to Section 4.B.5 – Excess Lands”.
5. **By-law 1234-HC/21, Map Amendments**, is modified as follows:  
  
Map amendment 11 is deleted and replaced with the following:  
  
Schedule “B.1” of the Official Plan is hereby further amended by identifying the lands shown as Part 12 on Schedule ‘A’ - Map 2 of 4, attached hereto, as “Subject to Section 4.B.5 – Excess Lands”.
6. **By-law 1234-HC/21, Map Amendments**, is modified as follows:

Map amendment 15 is deleted and replaced with the following:

Schedule “I.1” of the Official Plan is hereby further amended by removing the lands shown as Parts 1, 7 and 10 on Schedule ‘A’ - Map 2 of 4, attached hereto, from the Employment Area designation and by adding lands shown as Parts 2 and 8 on Schedule ‘A’ – Map 2 of 4, attached hereto, to the Employment Area designation.

Schedules “A.1”, “E.1”, “F.1” “F.4”, and “I.1” of the Official Plan are hereby further amended by adding the lands shown as Parts 2, 3, 4, 8, 9, and 11 on Schedule ‘A’ - Map 2 of 4, attached hereto, to the Caledonia Urban Boundary.

7. **By-law 1234-HC/21, Map Amendments**, is modified as follows:

Map amendment 33 is deleted and replaced with the following:

Schedule “B.4” of the Official Plan is hereby further amended by identifying the lands shown as Part 4 on Schedule ‘D’ - Map 2 of 2, attached hereto, as “Subject to Section 4.B.5 – Excess Lands”.

8. **By-law 1234-HC/21, Map Amendments**, is modified as follows:

Map amendment 34 is deleted and replaced with the following:

Schedules “A.2”, “E.2”, and “I.4” of the Official Plan are hereby further amended by adding the lands shown as Part 3 and Part 5 on Schedule ‘D’ - Map 2 of 2, attached hereto, to the Hagersville Urban Boundary.

9. **By-law 1234-HC/21, Map Amendments**, is modified as follows:

Map amendment 35 is deleted and replaced with the following:

Schedule “B.5” of the Official Plan is hereby further amended by identifying the lands shown as Part 1 on Schedule ‘E’ - Map 2 of 2, attached hereto, as “Subject to Section 4.B.5 – Excess Lands”.

10. **By-law 1234-HC/21, Map Amendments**, is modified as follows:

Map amendment 37 is deleted and replaced with the following:

Schedule “B.5” of the Official Plan is hereby further amended by identifying the lands shown as Part 2 on Schedule ‘E’ - Map 2 of 2, attached hereto, as “Subject to Section 4.B.5 – Excess Lands”.

11. **By-law 1234-HC/21, Map Amendments**, is modified as follows:

Map amendment 41 is deleted and replaced with the following:

Schedules “A.2”, “E.2”, and “I.5” of the Official Plan are hereby further amended by adding lands shown as Parts 3 and 4 on Schedule ‘E’ – Map 2 of 2, attached hereto, to the Jarvis Urban Boundary.

12. **By-law 1234-HC/21, Map Amendments**, is modified as follows:

Map amendment 42 is deleted and replaced with the following:

Schedule “B.6” of the Official Plan is hereby further amended by identifying the lands shown as Part 1 on Schedule ‘F’ - Map 2 of 2, attached hereto, as “Subject to Section 4.B.5 – Excess Lands”.

13. **By-law 1234-HC/21, Map Amendments**, is modified as follows:

Map amendment 43 is deleted in its entirety.

Dated at Toronto this 26<sup>th</sup> day of November, 2021.

A handwritten signature in black ink, appearing to read 'Hannah Evans', written over a horizontal line.

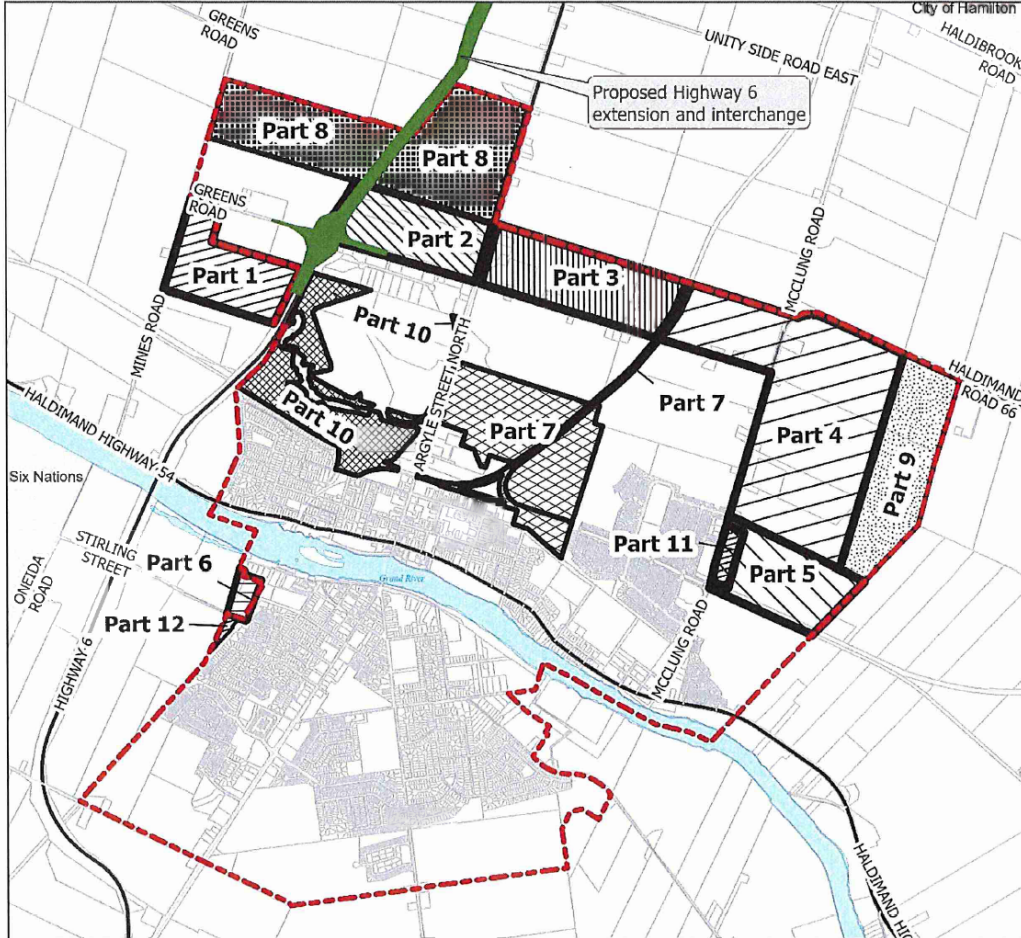
Hannah Evans  
Assistant Deputy Minister  
Municipal Services Division  
Ministry of Municipal Affairs and Housing

# Amendment No. HCOP-57

## To the Haldimand County Official Plan



0 20 40 60  
Metres



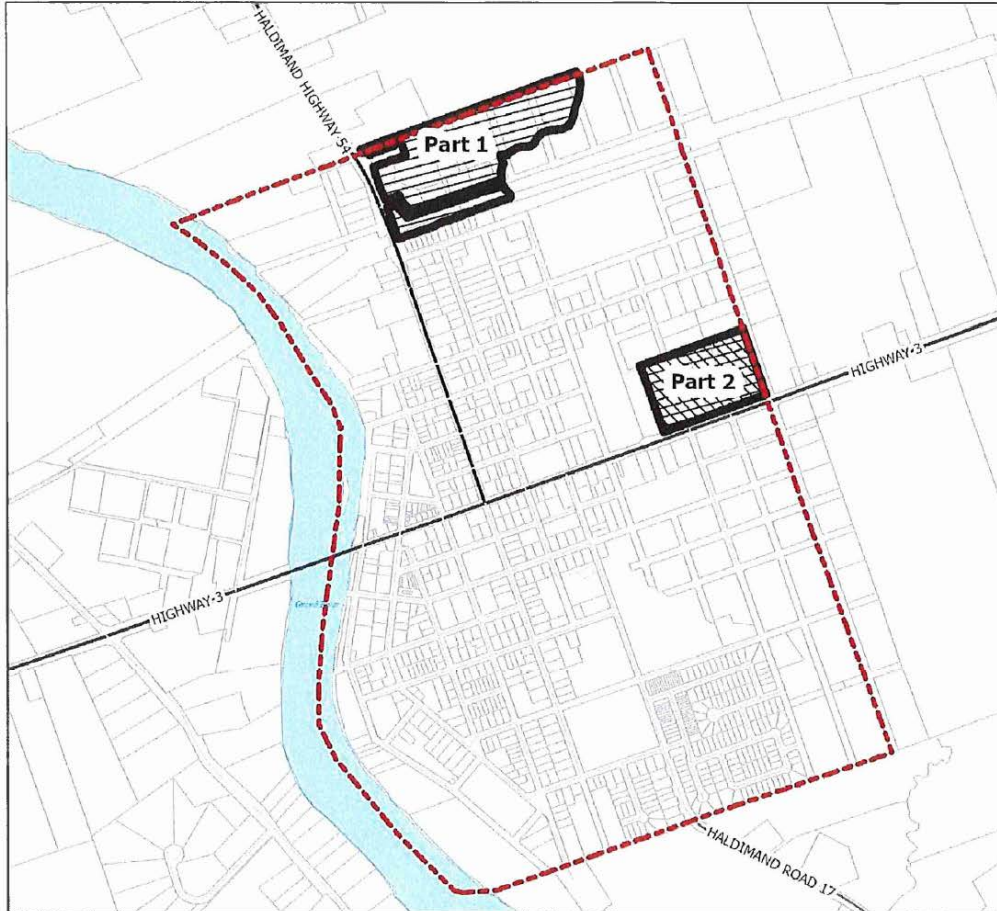
NOTE: Measurements shown on this plan are in metres and may be converted into feet by dividing by 0.3048. Measurements indicated in this drawing are representational in nature. They have been obtained without the benefit of legal or cadastral surveys linked to coordinates and therefore should not be considered to be survey grade and should not be used for legal purposes.

SCHEDULE 'A' - MAP 2 of 4

# Amendment No. HCOP-57 To the Haldimand County Official Plan



0 20 40 60  
Metres



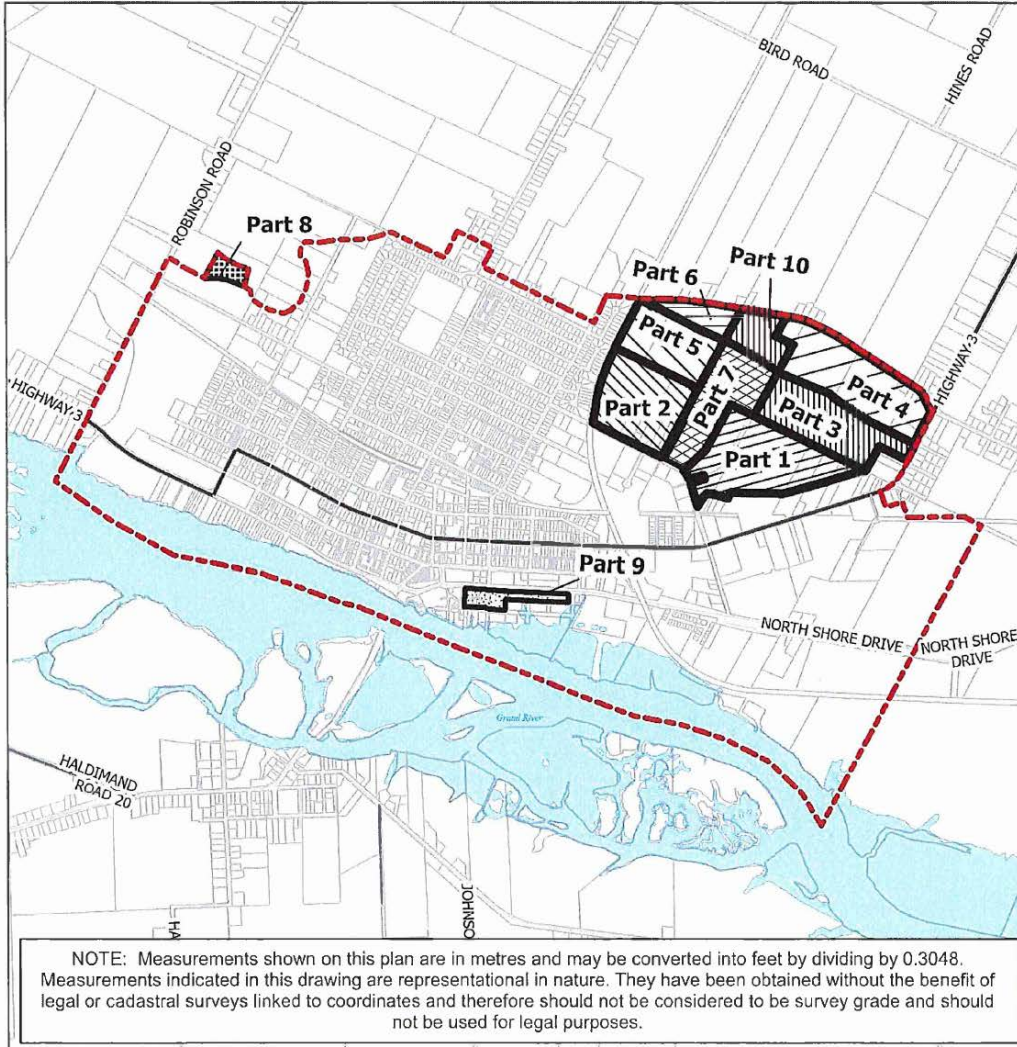
NOTE: Measurements shown on this plan are in metres and may be converted into feet by dividing by 0.3048 .  
Measurements indicated in this drawing are representational in nature. They have been obtained without the benefit of legal or cadastral surveys linked to coordinates and therefore should not be considered to be survey grade and should not be used for legal purposes.

# Amendment No. HCOP-57

## To the Haldimand County Official Plan



0 20 40 60 Metres



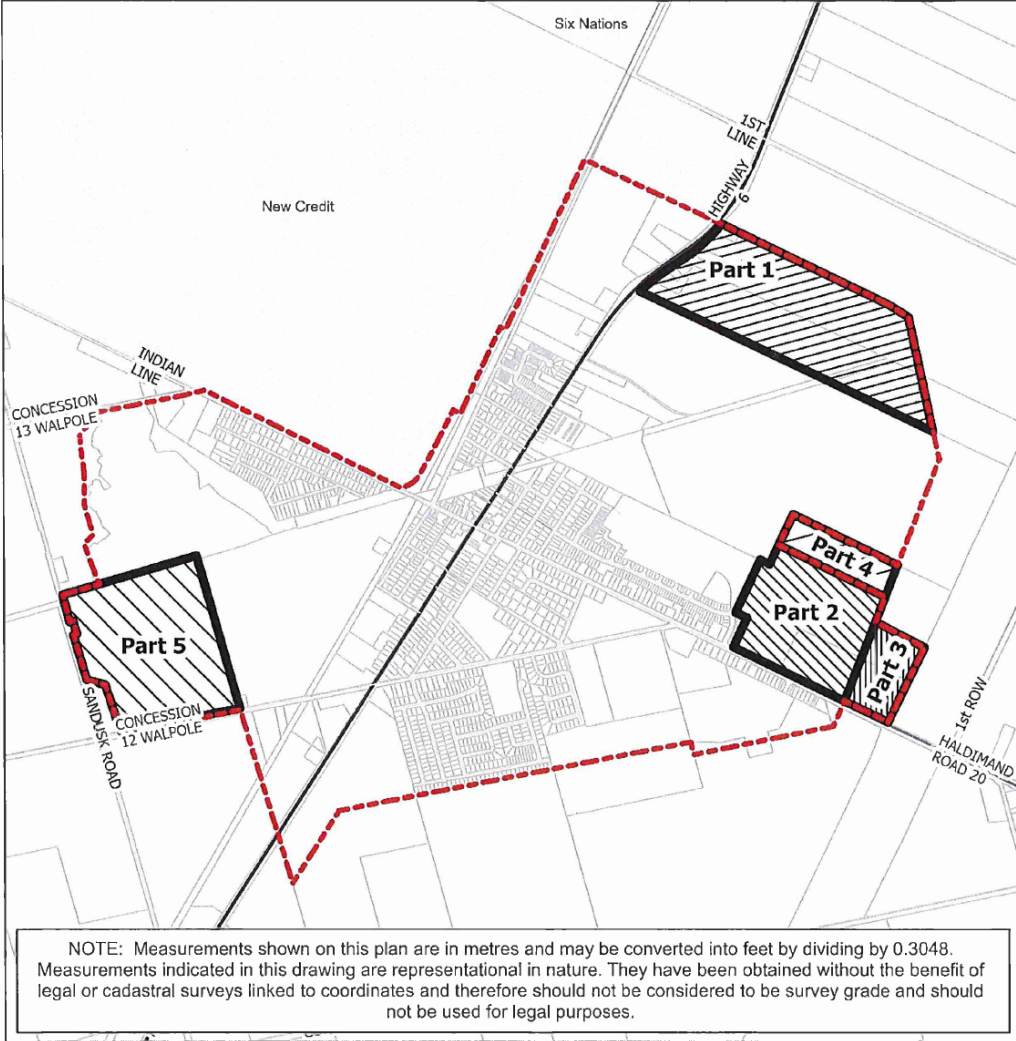
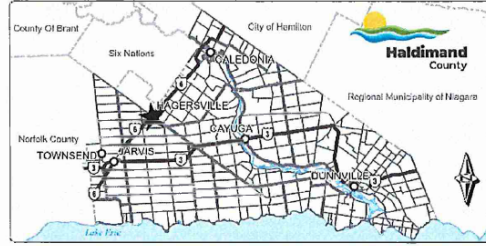
NOTE: Measurements shown on this plan are in metres and may be converted into feet by dividing by 0.3048. Measurements indicated in this drawing are representational in nature. They have been obtained without the benefit of legal or cadastral surveys linked to coordinates and therefore should not be considered to be survey grade and should not be used for legal purposes.

SCHEDULE 'C' - MAP 2 of 2

**Amendment No. HCOP-57**  
 To the Haldimand County  
 Official Plan



0 20 40 60 Metres



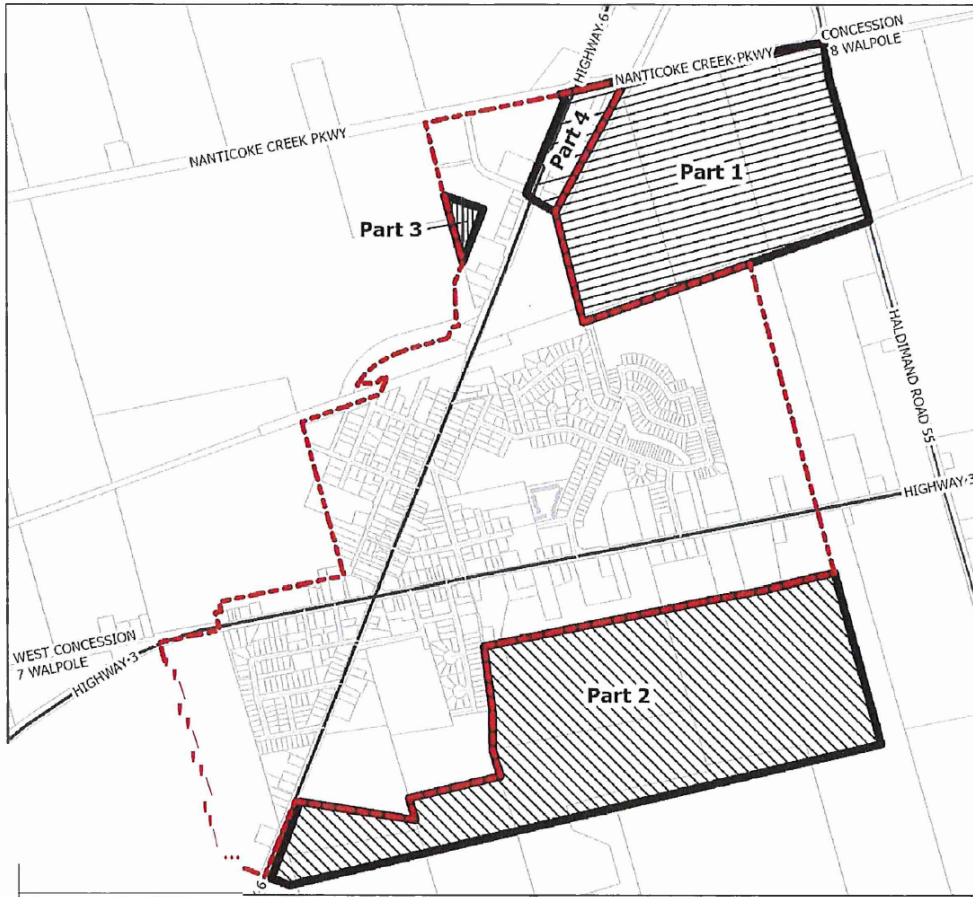
NOTE: Measurements shown on this plan are in metres and may be converted into feet by dividing by 0.3048. Measurements indicated in this drawing are representational in nature. They have been obtained without the benefit of legal or cadastral surveys linked to coordinates and therefore should not be considered to be survey grade and should not be used for legal purposes.

SCHEDULE 'D' - MAP 2 of 2

**Amendment No. HCOP-57  
To the Haldimand County  
Official Plan**



0 20 40 60  
Metres



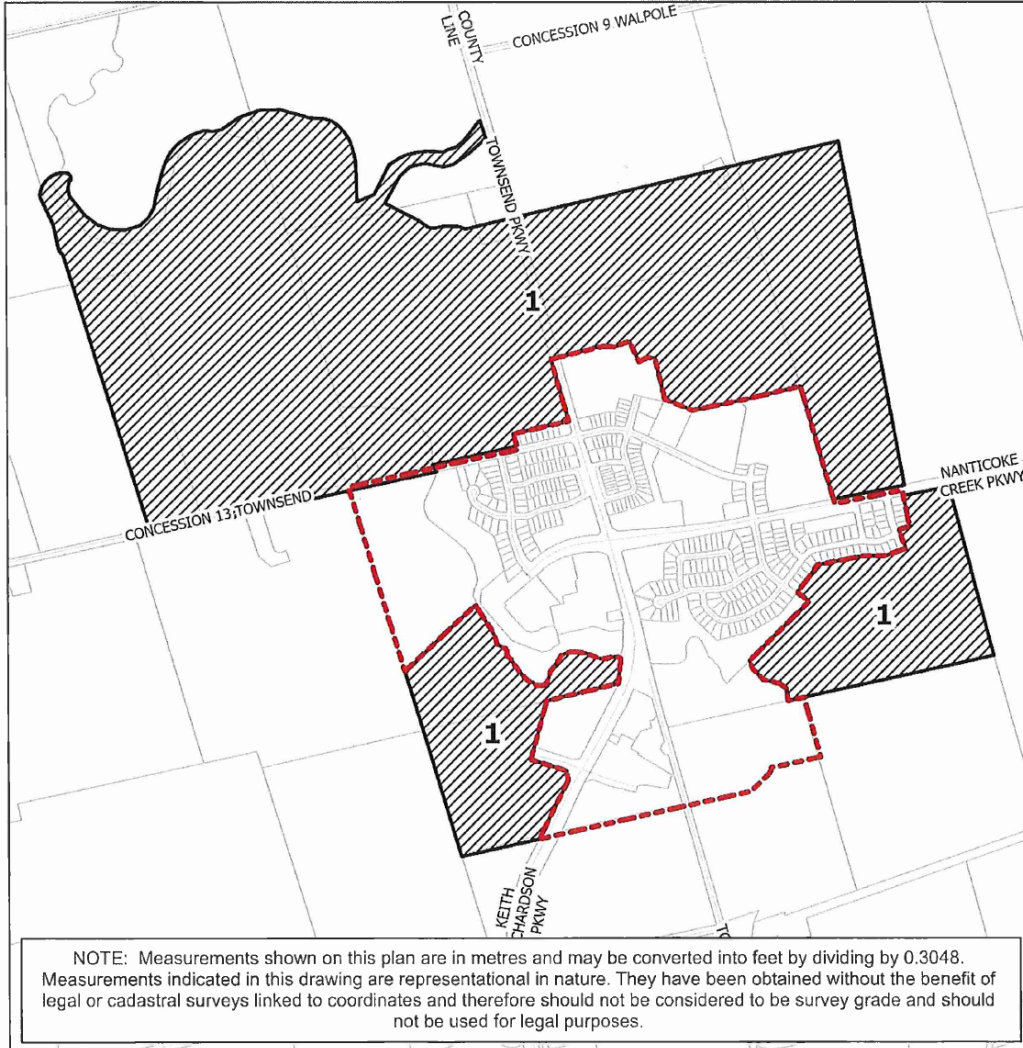
NOTE: Measurements shown on this plan are in metres and may be converted into feet by dividing by 0.3048 .  
Measurements indicated in this drawing are representational in nature. They have been obtained without the benefit of legal or cadastral surveys linked to coordinates and therefore should not be considered to be survey grade and should not be used for legal purposes.



**Amendment No. HCOP-57**  
To the Haldimand County  
Official Plan



0 20 40 60  
Metres



SCHEDULE 'F' - MAP 2 of 2