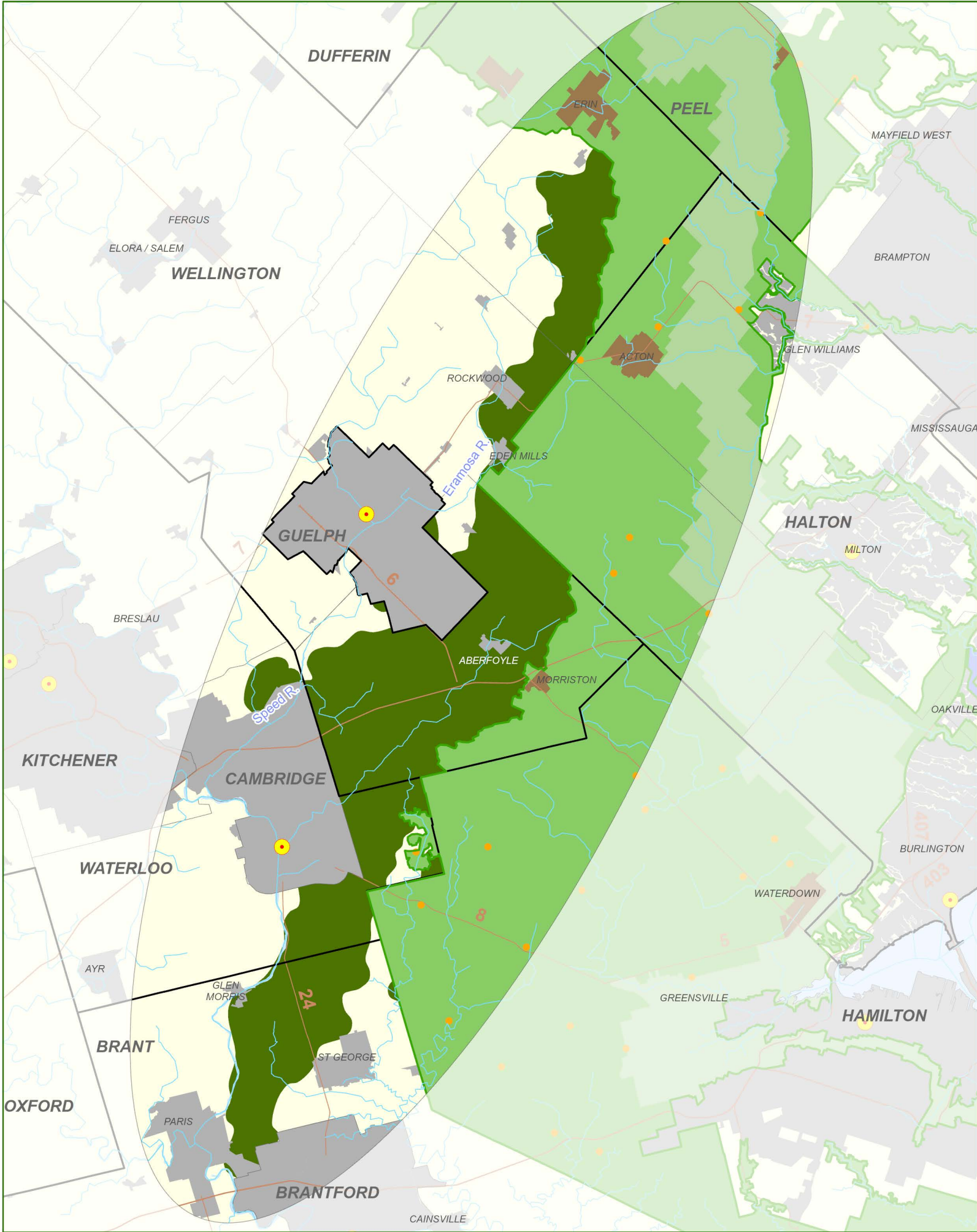


Growing the Greenbelt Study Area – Paris Galt Moraine



LEGEND

- Greenbelt Area (O.Reg. 59/05, as amended)
- Protected Countryside
- Towns / Villages
- Hamlets
- Urban River Valleys
- Niagara Escarpment Plan Area
- Paris Galt Moraine Study Area
- GGH Settlement Areas Outside the Greenbelt (incl. Brantford/Brant Annexation)
- Municipal Boundary
- Water
- Urban Growth Centres
- Major Road or Highway

This map is for illustrative purposes only to seek feedback on a Study Area of lands focused on the Paris Galt Moraine, growing the Greenbelt. The Paris Galt Moraine Study Area does not constitute a Greenbelt boundary.

Settlement boundaries generally reflect information provided by the relevant municipality. For precise boundaries and locations of Settlement Areas (e.g. Settlements Areas Outside the Greenbelt and Greenbelt Towns/Villages and Hamlets), the appropriate municipalities should be consulted.

Source of Information:
Produced by and using data sources from the Ministry of Municipal Affairs and Housing, Ministry of Environment, Conservation and Parks and the Ministry of Energy, Northern Development and Mines.

Projection: UTM Zone17 NAD83

© 2021, Queen's Printer for Ontario

