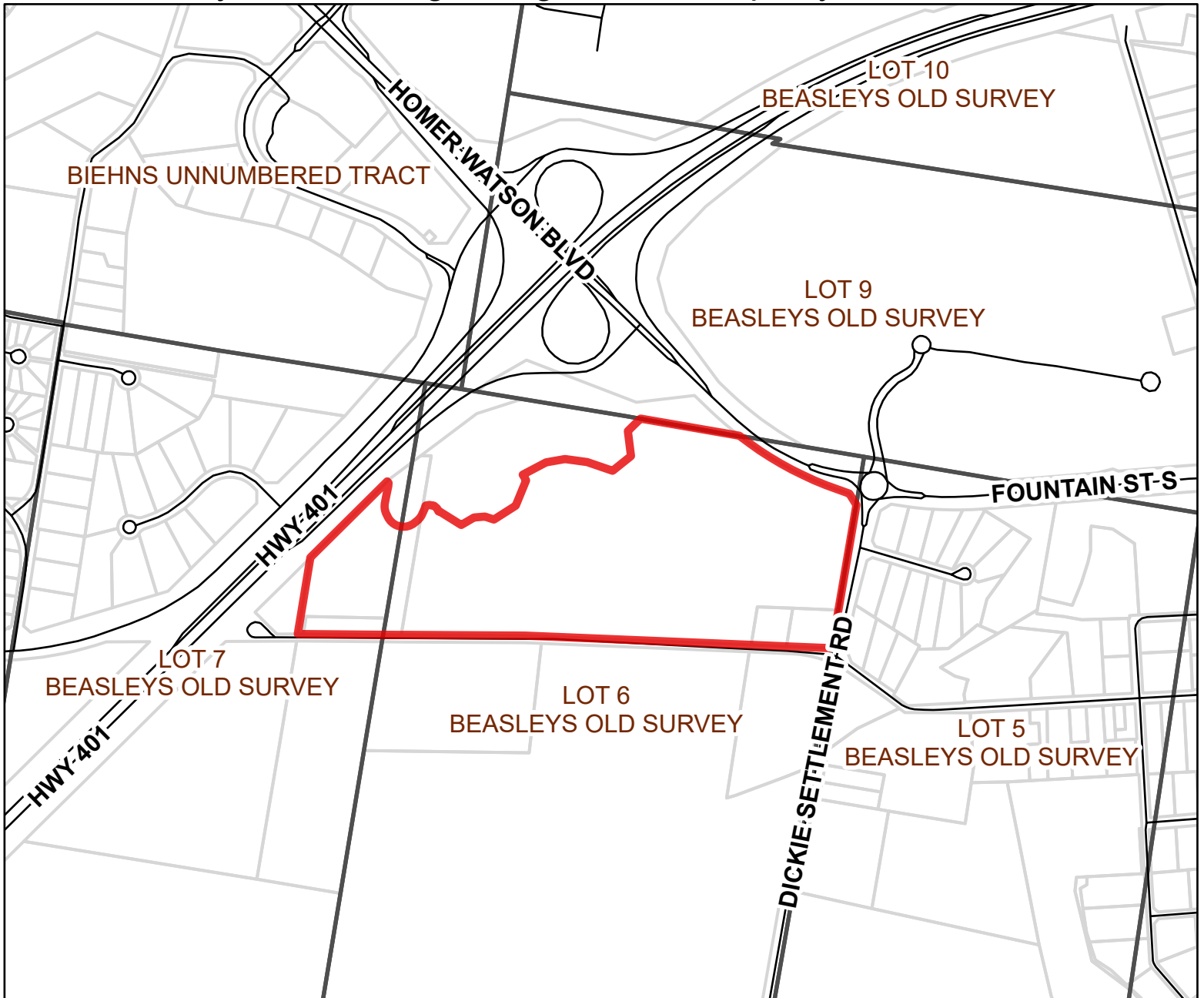


Part of Lots 6 and 7, Beasley's Old Survey,  
City of Cambridge, Regional Municipality of Waterloo



**MAP No. 269**




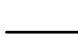
Map filed at the office of the Ontario  
Ministry of Municipal Affairs and Housing,  
777 Bay St., Toronto, Ontario,  
Planning Act

Ontario Regulation: 600/21

Date: August 27, 2021

Original Signed By: Minister of Municipal  
Affairs and Housing

**LEGEND**

-  Lot & Concession
-  Parcels
-  Subject Lands
-  Roads

0 60 120 240  
Metres  
1 cm equals 100 metres



Map North: 23°E



Map description:

This is map no. 269 referred to in a Minister's Zoning Order. It shows lands which are located in Part of Lots 6 and 7, Beasley's Old Survey, City of Cambridge, Regional Municipality of Waterloo. We are committed to providing accessible customer service (<https://www.ontario.ca/page/accessible-customer-service-policy>). On request, we can arrange for accessible formats and communications supports. Please contact MMAH by email ([mininfo@ontario.ca](mailto:mininfo@ontario.ca)) for regulation details.

**THIS IS NOT A PLAN OF SURVEY**

Information provided by the Ministry of Municipal  
Affairs and Housing, under licence with the  
Ministry of Natural Resources.

© 2021, Queen's Printer for Ontario.