

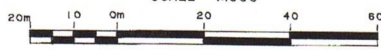
PLAN OF SURVEY OF
PART OF SUMMER RESORT LOCATION PP 641
REGISTERED PLAN M-99 AND
PART OF LOCATION TW 215
 TOWNSHIP OF JACQUES
 DISTRICT OF THUNDER BAY

PLAN 55 R- 10222

RECEIVED AND DEPOSITED
 DATE Jan 4/95
J. Wick 955 T.
 36P474
 LAND REGISTRAR FOR THE LAND TITLES
 DIVISION OF THUNDER BAY

I REQUIRE THIS PLAN TO BE DEPOSITED
 UNDER THE LAND TITLES ACT.
 DATE NOVEMBER 20, 1995.

P. R. Milton
 P. R. MILTON
 ONTARIO LAND SURVEYOR

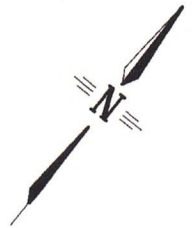
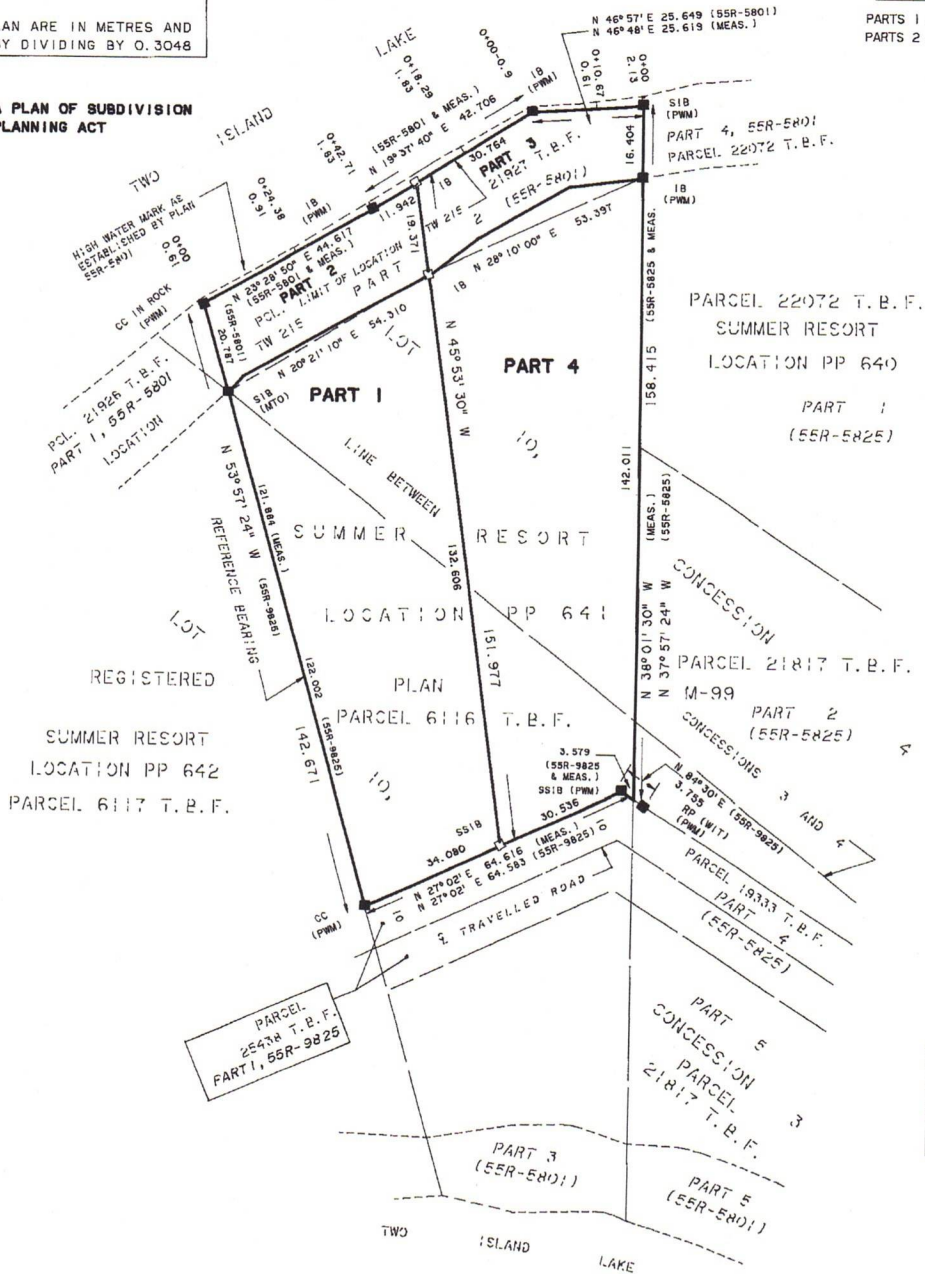


P. R. MILTON O. L. S.
 1995

METRIC
 DISTANCES SHOWN ON THIS PLAN ARE IN METRES AND
 CAN BE CONVERTED TO FEET BY DIVIDING BY 0.3048

**CAUTION: THIS PLAN IS NOT A PLAN OF SUBDIVISION
 WITHIN THE MEANING OF THE PLANNING ACT**

PARTS 1 AND 4 - PART OF PARCEL 6116 T.B.F.
 PARTS 2 AND 3 - PART OF PARCEL 21927 T.B.F.



PART	AREA ha. +/-
1	0.541
2	0.098
3	0.093
4	0.572

SURVEYOR'S CERTIFICATE

I CERTIFY THAT:
 1. THIS SURVEY AND PLAN ARE CORRECT AND IN ACCORDANCE
 WITH THE SURVEYS ACT AND THE LAND TITLES ACT AND THE
 REGULATIONS MADE THEREUNDER.
 2. THE SURVEY WAS COMPLETED ON THE 30th DAY OF OCTOBER
 1995.

P. R. Milton
 P. R. MILTON
 ONTARIO LAND SURVEYOR

THUNDER BAY, ONT.
 NOVEMBER 20, 1995.

LEGEND

- SIB INDICATES STANDARD IRON BAR
- SSIB INDICATES SHORT STANDARD IRON BAR
- IB INDICATES IRON BAR
- INDICATES MONUMENT FOUND
- INDICATES PLANTED MONUMENT
- WIT INDICATES WITNESS
- PWM INDICATES PARSONS, WILSON & MILTON LTD.
- MTO INDICATES MINISTRY OF TRANSPORTATION OF ONTARIO

NOTE

BEARINGS ARE ASTRONOMIC AND ARE REFERRED TO THE
 THE SOUTHWESTERLY LIMIT OF LOCATION PP 641 AS
 SHOWN ON DEPOSITED PLAN 55R-9825 HAVING A BEARING
 OF N 53°57'24" W

PARSONS, WILSON, MILTON & BODE LTD.
 ONTARIO LAND SURVEYORS
 THUNDER BAY, ONT. NOV. 20, 1995.