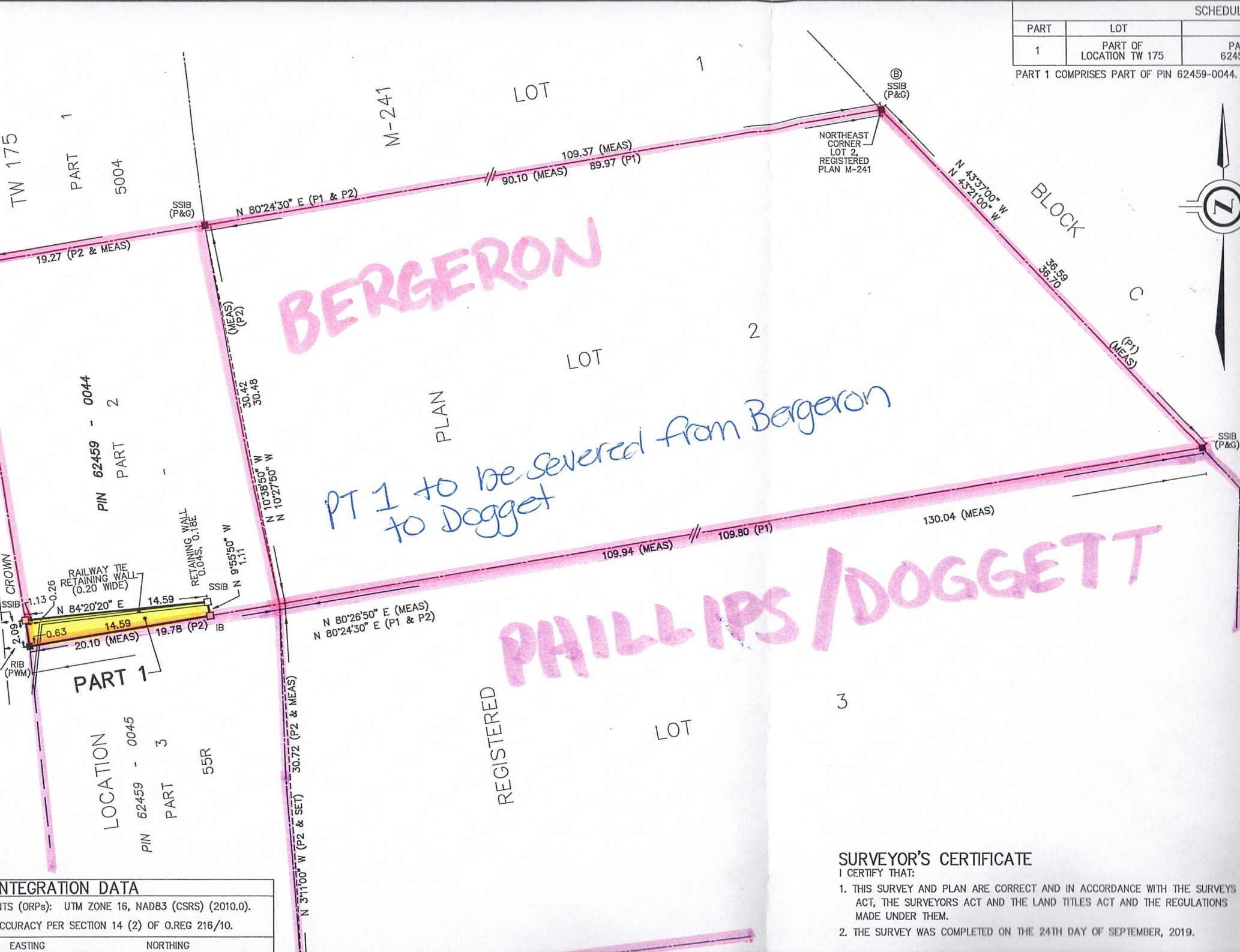


| PART | LOT                     | SCHEDULE |
|------|-------------------------|----------|
| 1    | PART OF LOCATION TW 175 | PA 6245  |

PART 1 COMPRISES PART OF PIN 62459-0044.



**BERGERON**

**PHILLIPS/DOGGETT**

*PT 1 to be severed from Bergeron to Doggett*

| INTEGRATION DATA                             |                                     |
|--|-------------------------------------|
| COORDINATE SYSTEMS (ORPs):                   | UTM ZONE 16, NAD83 (CSRS) (2010.0). |
| ACCURACY PER SECTION 14 (2) OF O.REG 216/10. |                                     |
| EASTING                                      | NORTHING                            |

**SURVEYOR'S CERTIFICATE**

I CERTIFY THAT:

1. THIS SURVEY AND PLAN ARE CORRECT AND IN ACCORDANCE WITH THE SURVEYS ACT, THE SURVEYORS ACT AND THE LAND TITLES ACT AND THE REGULATIONS MADE UNDER THEM.
2. THE SURVEY WAS COMPLETED ON THE 24TH DAY OF SEPTEMBER, 2019.

| SCHEDULE |                         |                    |           |
|----------|-------------------------|--------------------|-----------|
| PART     | LOT                     | PIN                | AREA      |
| 1        | PART OF LOCATION TW 175 | PART OF 62459-0044 | 0.002 Ha. |

PART 1 COMPRISES PART OF PIN 62459-0044.

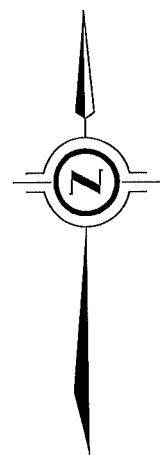
**PLAN 55R-14636**

Received and deposited

October 16<sup>th</sup>, 2019

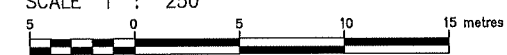
April Sarkany

Representative for the  
Land Registrar for the  
Land Titles Division of  
Thunder Bay (No.55)



PLAN OF SURVEY OF  
**PART OF LOCATION TW 175**  
GEOGRAPHIC TOWNSHIP OF KILLRAINE  
DISTRICT OF THUNDER BAY

SCALE 1 : 250



J.D. BARNES LIMITED

THE INTENDED PLOT SIZE OF THIS PLAN IS 609mm IN WIDTH BY 355mm IN HEIGHT WHEN PLOTTED AT A SCALE OF 1:250

**METRIC** DISTANCES AND/OR COORDINATES SHOWN ON THIS PLAN ARE IN METRES AND CAN BE CONVERTED TO FEET BY DIVIDING BY 0.3048.

AREAS SHOWN ON THIS PLAN ARE IN HECTARES AND CAN BE CONVERTED TO ACRES BY MULTIPLYING BY 2.471.

**NOTES**

BEARINGS ARE UTM GRID, DERIVED BY REAL TIME KINEMATIC (RTK) OBSERVATIONS FROM A LOCAL BASE STATION (N 5 408 988.98, E 473 081.80), ESTABLISHED USING THE PRECISE POINT POSITIONING (PPP) SERVICE, TO OBSERVED REFERENCE POINTS (ORP's) A AND B. THE RESULTANT BEARING BETWEEN ORP's A AND B IS N 80°24'30" E, UTM ZONE 16, NAD83 (CSRS) (2010.0).

DISTANCES ARE GROUND AND CAN BE CONVERTED TO GRID BY MULTIPLYING BY THE COMBINED SCALE FACTOR OF 0.999568.

FOR BEARING COMPARISONS, A ROTATION OF 0°13'00" CLOCKWISE WAS APPLIED TO BEARINGS ON PLANS P1 & P2 TO CONVERT TO GRID BEARINGS.

**LEGEND**

|      |         |  |
|------|---------|--|
| ■    | DENOTES | SURVEY MONUMENT FOUND                  |
| □    | DENOTES | SURVEY MONUMENT SET                    |
| SSIB | DENOTES | SHORT STANDARD IRON BAR                |
| IB   | DENOTES | IRON BAR                               |
| RIB  | DENOTES | ROUND IRON PIPE                        |
| MEAS | DENOTES | MEASURED                               |
| P&G  | DENOTES | PHILLIPS & GAVIN, O.L.S.               |
| PWM  | DENOTES | PHILLIPS, WILSON & MILTON LTD., O.L.S. |
| P1   | DENOTES | REGISTERED PLAN M-241                  |
| P2   | DENOTES | PLAN 55R-5004                          |
| S    | DENOTES | SOUTH                                  |
| E    | DENOTES | EAST                                   |

**SURVEYOR'S CERTIFICATE**

I CERTIFY THAT:

1. THIS SURVEY AND PLAN ARE CORRECT AND IN ACCORDANCE WITH THE SURVEYS ACT, THE SURVEYORS ACT AND THE LAND TITLES ACT AND THE REGULATIONS MADE UNDER THEM.
2. THE SURVEY WAS COMPLETED ON THE 24TH DAY OF SEPTEMBER, 2019.

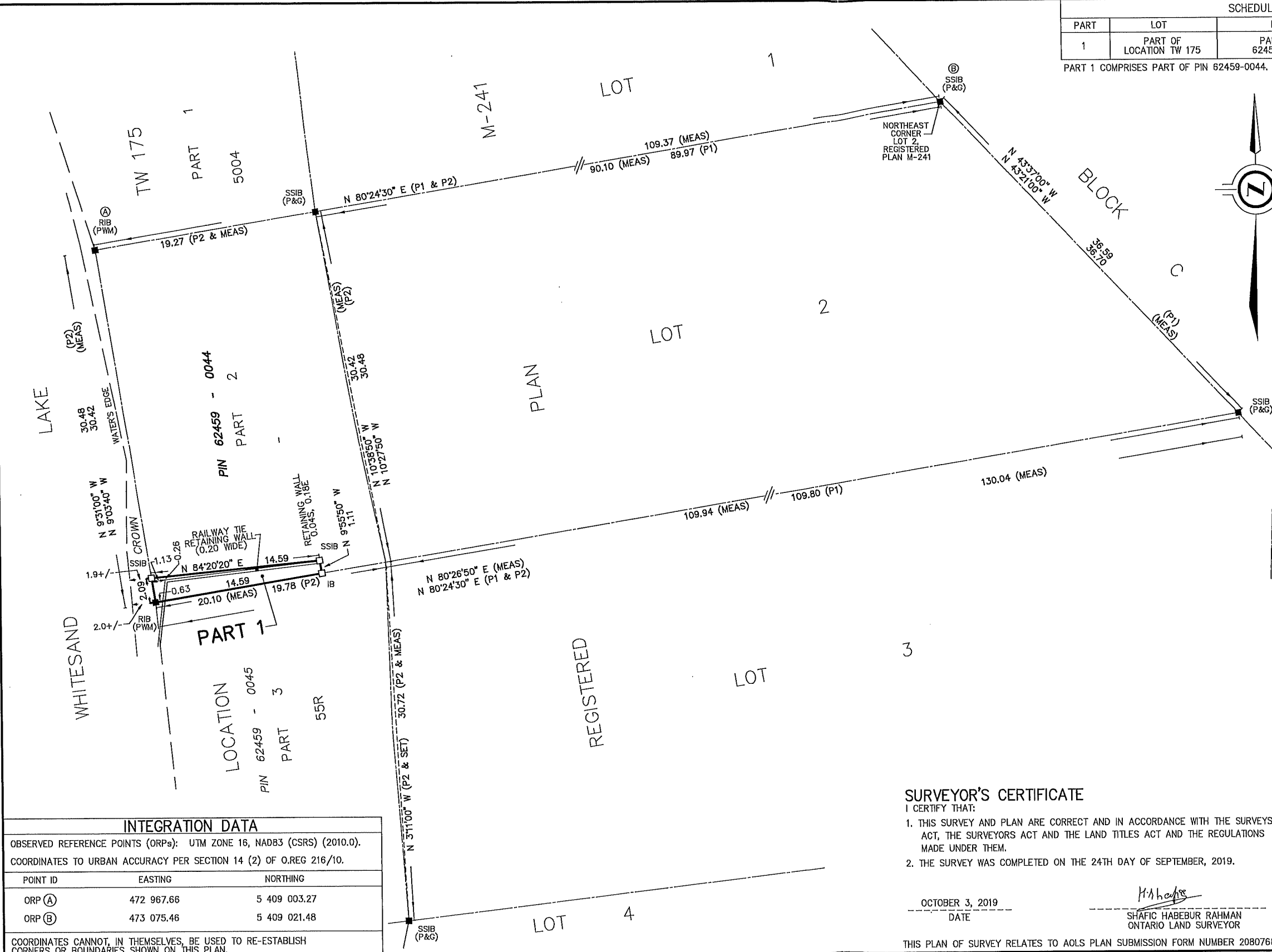
OCTOBER 3, 2019  
DATE

*Shafic Habibur Rahman*  
SHAFIC HABEBUR RAHMAN  
ONTARIO LAND SURVEYOR

THIS PLAN OF SURVEY RELATES TO AOLS PLAN SUBMISSION FORM NUMBER 2080768.

**J.D. BARNES LIMITED** SURVEYING  
MAPPING GIS  
LAND INFORMATION SPECIALISTS  
1001 WILLIAM STREET, SUITE 102A, THUNDER BAY, ON P7B 6M1  
T: (807) 622-6277 F: (807) 626-8040 www.jdbarnes.com

|  |                   |                                |
|--|-------------------|--------------------------------|
| DRAWN BY:<br>KJ                                | CHECKED BY:<br>SR | REFERENCE NO.:<br>19-32-540-00 |
| FILE: G:\19-32-540\00\Drawing\540-00-rplan.dgn |                   | DATED: 10/10/2019              |



| INTEGRATION DATA  |            |              |
|---|------------|--------------|
| OBSERVED REFERENCE POINTS (ORP's): UTM ZONE 16, NAD83 (CSRS) (2010.0).<br>COORDINATES TO URBAN ACCURACY PER SECTION 14 (2) OF O.REG 216/10. |            |              |
| POINT ID  | EASTING    | NORTHING     |
| ORP (A)   | 472 967.66 | 5 409 003.27 |
| ORP (B)   | 473 075.46 | 5 409 021.48 |
| COORDINATES CANNOT, IN THEMSELVES, BE USED TO RE-ESTABLISH CORNERS OR BOUNDARIES SHOWN ON THIS PLAN.  |            |              |