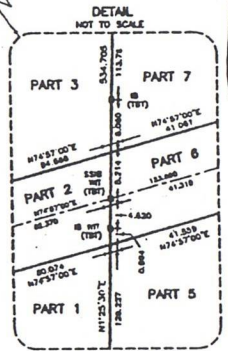
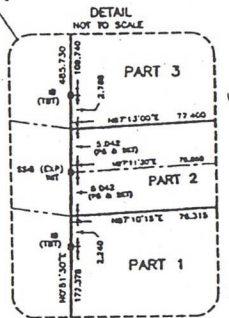
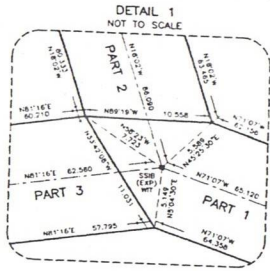
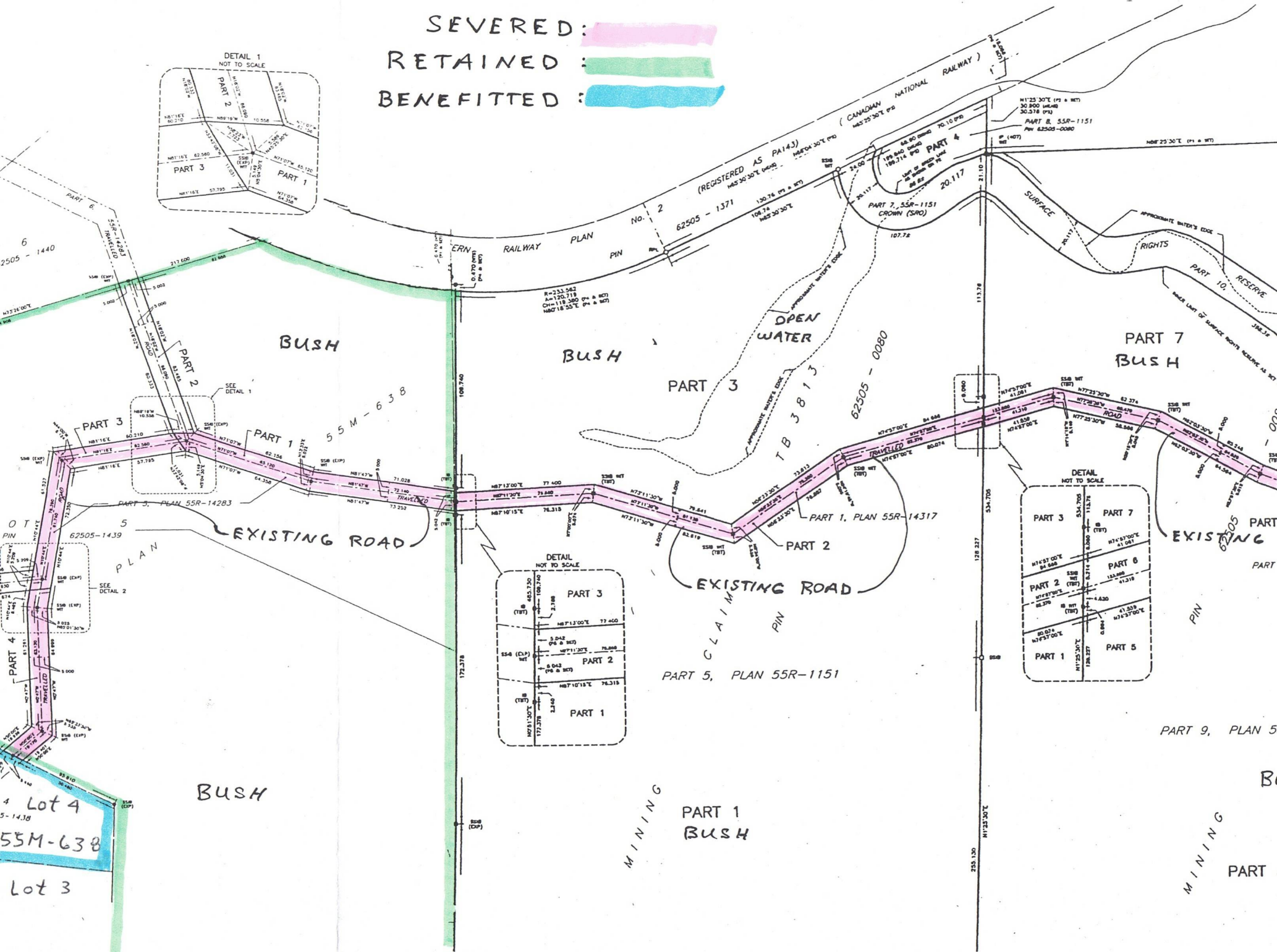


SEVERED:
 RETAINED:
 BENEFITTED:



Lot 4
5-14.30
55M-638
Lot 3

PART 9, PLAN 5
MINING PART

PART 5, PLAN 55R-1151

(REGISTERED AS PA143)
62505 - 1371

62505 - 0080

PART 1, PLAN 55R-14317

PART 8, 55R-1151
Plan 62505-0080

PART 7
BUSH

PART 1
BUSH

BUSH

BUSH

PART 3

EXISTING ROAD

EXISTING ROAD

EXISTING ROAD

CLAIM

MINING

MINING

R=233.562
A=120.118
Ch=118.280 (P & M)
MB=118.55°E (P & M)

OPEN WATER

SURFACE

APPROXIMATE WATER'S EDGE

RESERVE

CANADIAN NATIONAL RAILWAY

RAILWAY PLAN

PLAN

6

5

B

PART