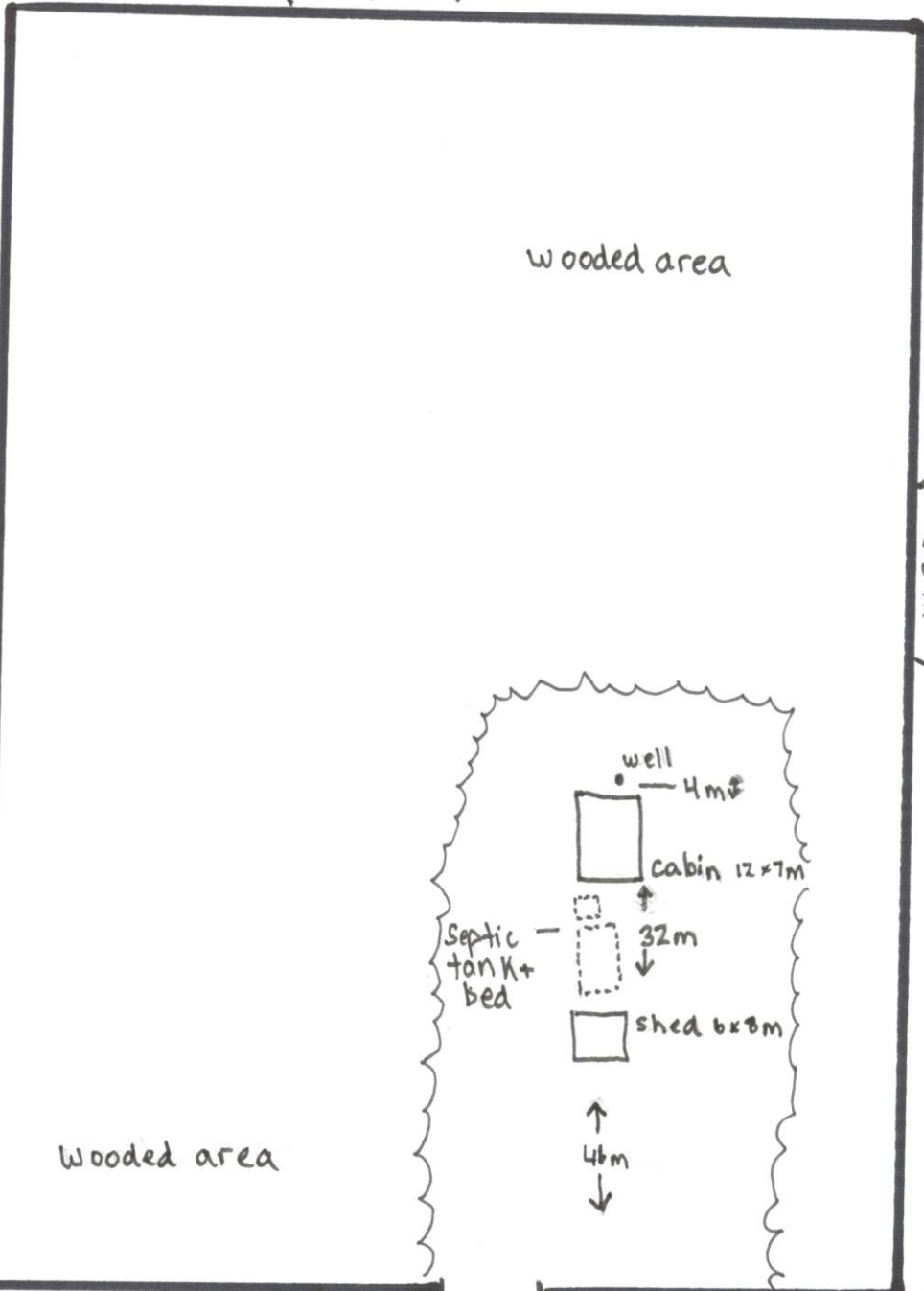


Area to be severed (3.58 hectares)



← 139 m →

wooded area
↳ retained area



← 255 m →

wooded area
↳ retained area / agricultural

entrance to retained area

entrance to retained area

Wooded area

well 4m
cabin 12x7m
↑ 32m
septic tank + bed
shed 6x8m
↑ 46m

← 69 m → ← 12 m → ← 58 m →

Public Road

PLAN OF SURVEY OF
PART OF LOTS 4 AND 5
CONCESSION 6
GEOGRAPHIC TOWNSHIP OF HENWOOD
DISTRICT OF TIMISKAMING

SCALE 1 : 1000 METRES
0 5 10 15 20 40 60 80 100 120
SURVEYORS ON SITE INC.

THE INTENDED PLOT SIZE OF THIS PLAN IS 609mm IN WIDTH BY 910mm IN HEIGHT WHEN PLOTTED AT A SCALE OF 1:1000.

LEGEND

- MONUMENT PLANTED
- MONUMENT FOUND
- ▣ STANDARDS IRON BAR
- IRON BAR
- WT WITNESS
- OU ORIGIN UNKNOWN
- NOT TO SCALE
- SC H. SUTCLIFFE LTD.

NOTES

DISTANCES AND COORDINATES SHOWN ON THIS PLAN ARE IN METRES AND CAN BE CONVERTED TO FEET BY DIVIDING BY 0.3048.

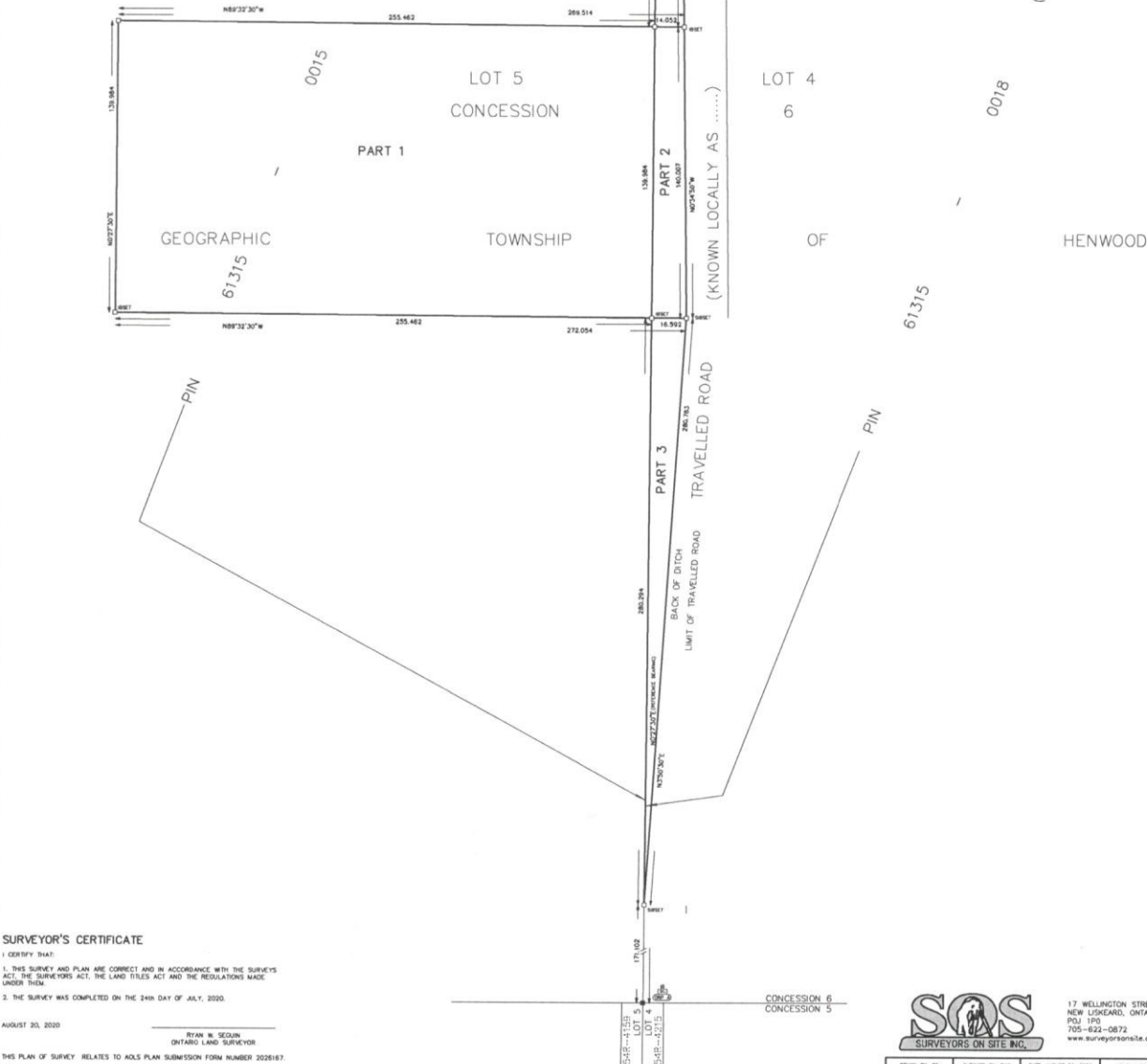
DISTANCES ON THIS PLAN ARE HORIZONTAL GROUND DISTANCES AND CAN BE CONVERTED TO GRID DISTANCES BY MULTIPLYING BY THE AVERAGE COMBINED SCALE FACTOR OF 0.99999546.

BEARINGS ARE UTM GRID, AND ARE DERIVED FROM SCP# 00586 MONUMENTS H000089970342 & H000089970343 AND ARE REFERRED TO THE CENTRAL MERIDIAN OF UTM ZONE 17 (84° WEST LONGITUDE) NAD83(CRS) (2010).

INTEGRATION COORDINATE TABLES		
SPECIFIED CONTROL POINTS (SCP#)		
MONUMENT	NORTHING	EASTING
00819970342	5278643.72	580235.58
00819970343	5278647.33	581878.98
UTM ZONE 17, NAD83(CRS) (2010)		
OBSERVED REFERENCE POINTS (ORP#) ARE DERIVED FROM RTM MEASUREMENTS ON SCP# AND ARE REFERRED TO UTM ZONE 17, NAD83(CRS) (2010)		
COORDINATES SHOWN HEREON HAVE A RELATIVE ACCURACY TO MEET THE REQUIREMENTS OF AN URBAN AREA AT A 95% CONFIDENCE LEVEL AS PER SEC. 14(2) OF O REG. 218/75 UNDER THE SURVEY ACT		
POINT ID	NORTHING	EASTING
ORP A	5278281.01	580215.56
ORP B	5278251.41	580228.58
COORDINATES CANNOT, IN THEMSELVES, BE USED TO RE-ESTABLISH CORNERS OR BOUNDARIES SHOWN ON THIS PLAN.		

SCHEDULE				
PART	LOT	CONCESSION	PIN	AREA (HA)
1	PART OF LOT 5		PIN 61315-0014 (LT)	3.5760
2			PIN 61315-0017 (LT)	0.2144
3	PART OF LOT 4	6	PIN 61315-0018 (LT)	0.2323
4				0.2850

GEOGRAPHIC TOWNSHIP OF HENWOOD
PART 1 COMPRISES PART OF PIN 61315-0015 (LT).
PARTS 2 TO 4 (INCLUSIVE) COMPRISE PART OF PIN 61315-0018 (LT).



SURVEYOR'S CERTIFICATE

- I CERTIFY THAT
- THIS SURVEY AND PLAN ARE CORRECT AND IN ACCORDANCE WITH THE SURVEY ACT, THE SURVEYORS ACT, THE LAND TITLES ACT AND THE REGULATIONS MADE UNDER THEM.
- THE SURVEY WAS COMPLETED ON THE 24th DAY OF JULY, 2020.

AUGUST 20, 2020
RYAN W. SEGUIN
ONTARIO LAND SURVEYOR
THIS PLAN OF SURVEY RELATES TO ADS PLAN SUBMISSION FORM NUMBER 2020167.

SOS
SURVEYORS ON SITE INC.

17 WELLINGTON STREET
NEW LONDON, ONTARIO
POJ 1P0
705-622-0872
www.surveyson-site.com

DRAWN BY: RS CHECKED BY: RWS DATE: AUGUST 31, 2020 FILE: M2020-015 RSW