

Figure 1: Proposed Land Use Amendment #2014-005

Re-designation of portions of G2625 Rural Areas and G2622 Spruce-Current to Amethyst Highlands Enhanced Management Area E2260w

Scale: 1:62,500

Other Land Use Designations and Features

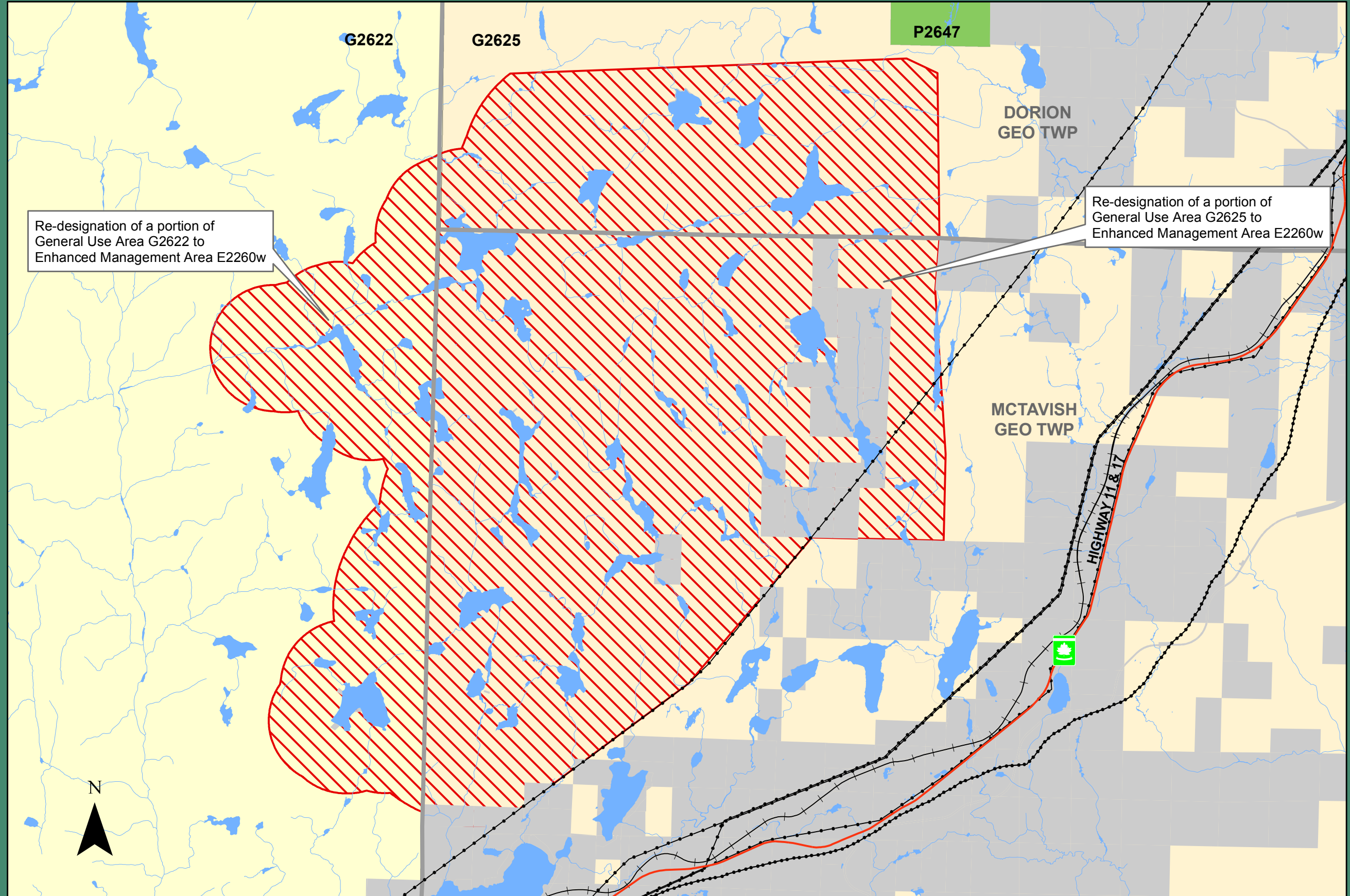
- Road
- Railroad
- Utility Line
- Lake \ River
- Geographic Township
- Private \ Patent Land

Land Use Amendment

- Re-designation

Crown Land Use Designations

- General Use Area G2622
- General Use Area G2625
- Existing Provincial Park



Re-designation of a portion of General Use Area G2622 to Enhanced Management Area E2260w

Re-designation of a portion of General Use Area G2625 to Enhanced Management Area E2260w



Land use mapping current as of 2018-06-28

