

Legend

- Diamond Lake is now identified as an At-Capacity Lake through this decision.
- Lands changed to Mineral Aggregate through this decision.
- Lands changed to Agriculture through this decision.
- Lands previously identified as non-decision areas in the March 22nd decision, where the Ministry's final decision is to approve the repeal of the previous designation and the County's adoption of a new designation as per Bylaw No. 49-18.

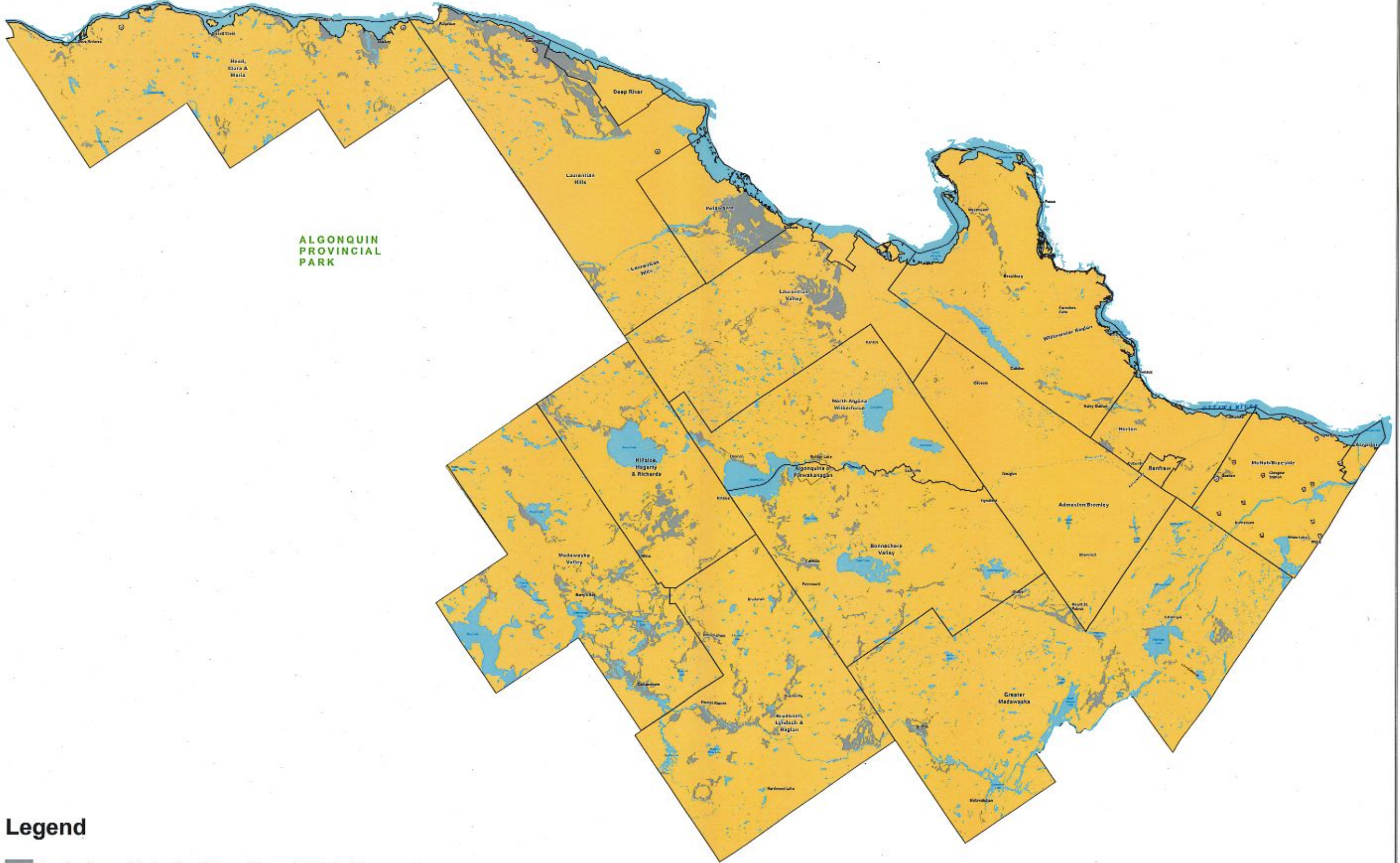


Appendix 1 - December 20, 2019

The information displayed on this map has been compiled from various sources. While every effort has been made to accurately depict the information, this map should not be relied on as being a precise indicator of locations of features or roads nor as a guide to navigation.

Produced by: GIS Unit - Advanced Analysis & Data Visualization, Data Collection and Desktop Support Solutions Branch, Community Services 4811 Centre St. © 2019, Queen's Printer for Ontario.

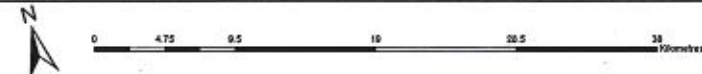
Source: Base Data: With Data supplied under Licence by Members of the Ontario Municipal Association & County of Windsor. Projection: UTM NAD83 Zone 18.



**ALGONQUIN
PROVINCIAL
PARK**

Legend

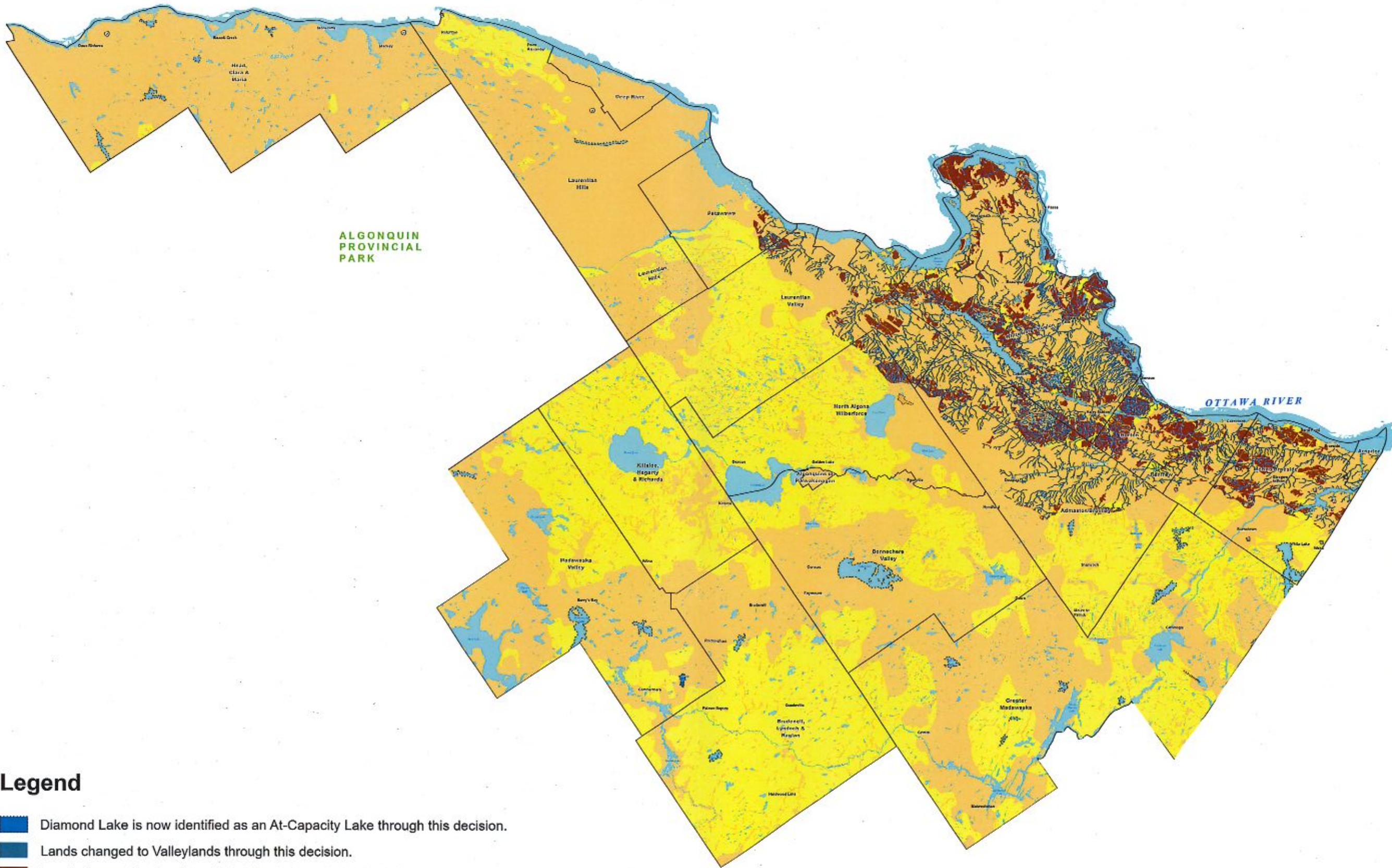
■ Lands changed to Sand and Gravel through this decision.



The information displayed on this map has been compiled from various sources. While every effort has been made to accurately depict the information, this map should not be relied on as being a precise indicator of location of features or roads nor as a guide to navigation.

Produced by: GIS Unit - Advanced Analytics & Data Visualization, Data Collection and Analysis Support Services Branch, Community Services I&T Cluster, © 2019, Queen's Printer for Ontario.

Source: Base Data: With Data supplied under license by Ministers of the Ontario Geospatial Data Exchange & County of Frontenac. Projection: UTM NAD83 Zone 18



**ALGONQUIN
PROVINCIAL
PARK**

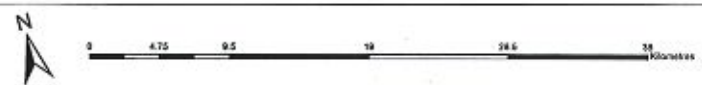
OTTAWA RIVER

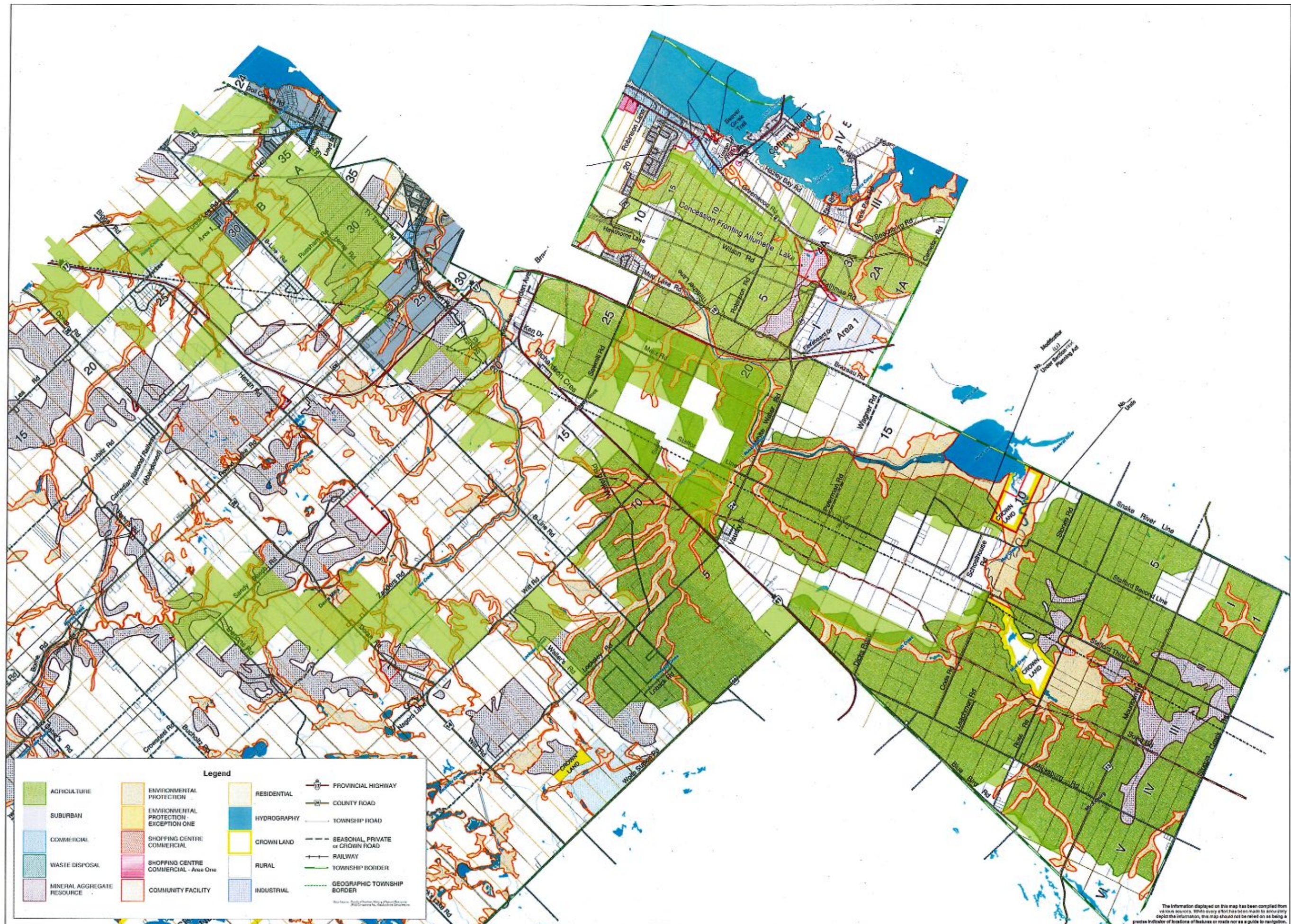
Legend

- Diamond Lake is now identified as an At-Capacity Lake through this decision.
- Lands changed to Valleylands through this decision.
- Lands changed to Significant Woodlands through this decision.
- Lands changed to Significant Wildlife Habitat (Deer Wintering Area) through this decision.

The information displayed on this map has been compiled from various sources. While every effort has been made to accurately depict the information, this map should not be relied on as being a precise indicator of locations of features or roads nor as a guide to navigation.

Produced by: GIS Unit - Advanced Analytics & Data Visualization, Data Collection and Decision Support Solutions Branch, Community Services, I&T Centre © 2019, Ontario, Province of Ontario. Source: Base Data: Web Data supplied under License by Members of the Ontario Geospatial Data Exchange & County of Brantwell. Projection: UTM NAD83 Zone 18





County of Renfrew - Map 5 Schedule B: Township of Laurentian Valley, Prime Agricultural Areas - December 20, 2019

The information displayed on this map has been compiled from various sources. While every effort has been made to accurately depict the information, this map should not be relied on as being a precise indicator of locations of features or roads nor as a guide to navigation.

Produced by: GIS Unit - Advanced Analysis & Data Visualization, Data Collection and Geospatial Support Solutions Branch, Community Services Unit, County of Renfrew, © 2019, Queen's Printer for Ontario.

Source: Base Data: With Data supplied under License by Members of the Ontario Geospatial Data Exchange & County of Renfrew. Projected: UTM NAD83 Zone 18