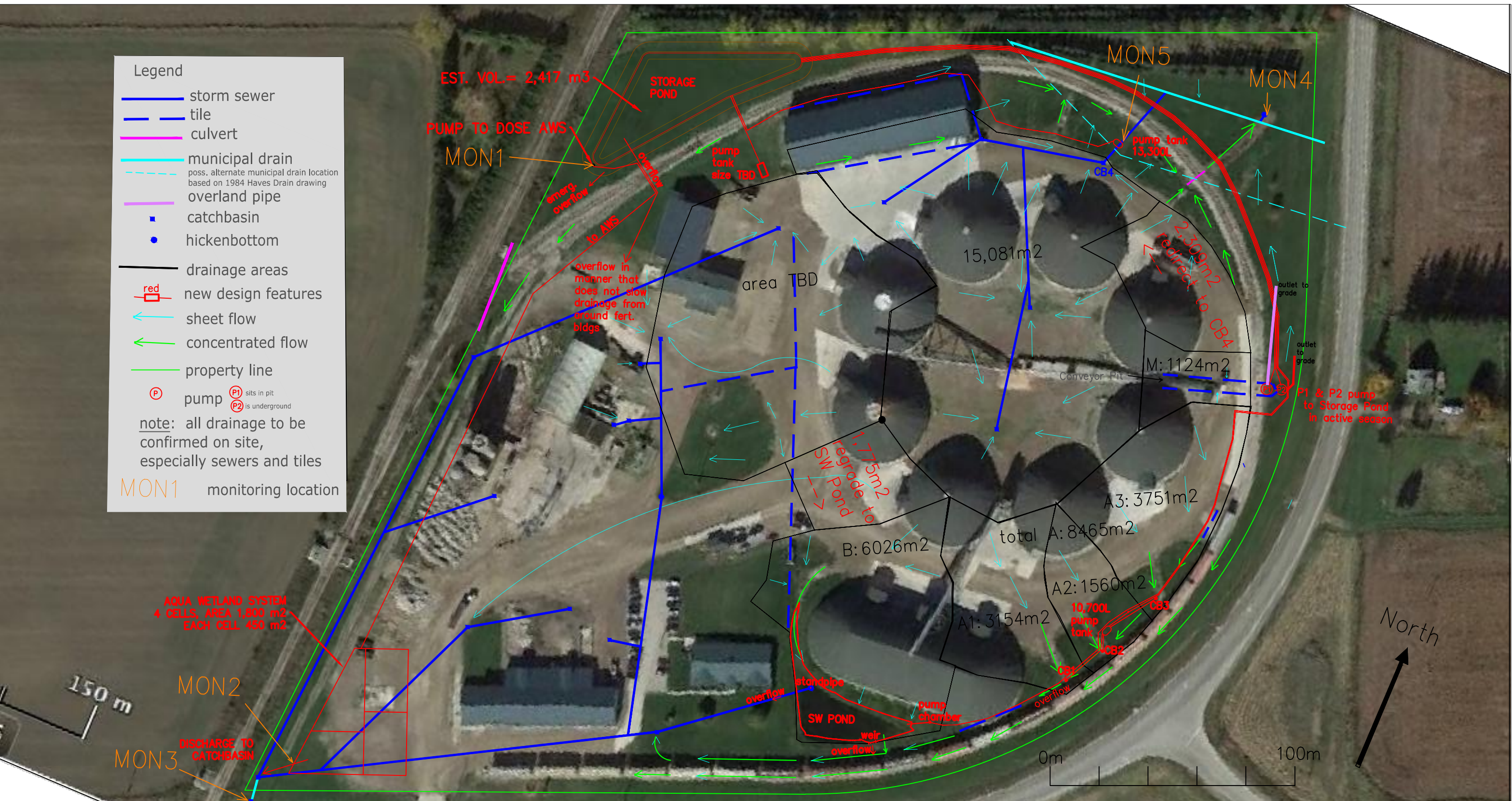


Legend

- storm sewer
- - - tile
- culvert
- municipal drain
- - - poss. alternate municipal drain location based on 1984 Haves Drain drawing
- overland pipe
- catchbasin
- hickenbottom
- drainage areas
- new design features
- ← sheet flow
- ← concentrated flow
- property line
- Ⓟ pump Ⓟ₁ sits in pit Ⓟ₂ is underground

note: all drainage to be confirmed on site, especially sewers and tiles

MON1 monitoring location



Rivercourt Engineering Inc.
4 Beechwood Crescent
Toronto ON M4K 2K8
Tel. 647-479-4104
www.rivercourt.ca

TREATMENT TECHNOLOGIES
THE AQUA WETLAND SYSTEM
AQUA Treatment Technologies Inc.
4250 Fly Rd. Campden ON L0R 1G0
905-327-4571
www.aqua-tt.com

Project Name:
Agromart Belton
Stormwater Treatment

Project Address:
17554 Plover Mills Rd.
Thorndale, Ontario
N0M 2P0

Date:
Feb. 25, 2020

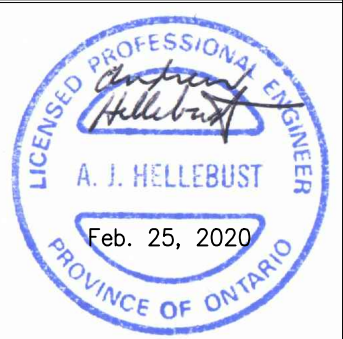
Drawing Title:
Site Plan with
Monitoring
Locations shown

Drawing Number:
2 revised

Drawn By:
MU

Checked By:
AH

Scale:
see scale



MONITORING LOCATIONS:

MON1 – pump basin pumping to AWS
 MON2 – discharge from AWS
 MON3 – SW stormwater discharge point
 MON4 – NE stormwater discharge point at Hickenbottom outlet
 MON5 – NE stormwater discharge point at overflow from NE tank