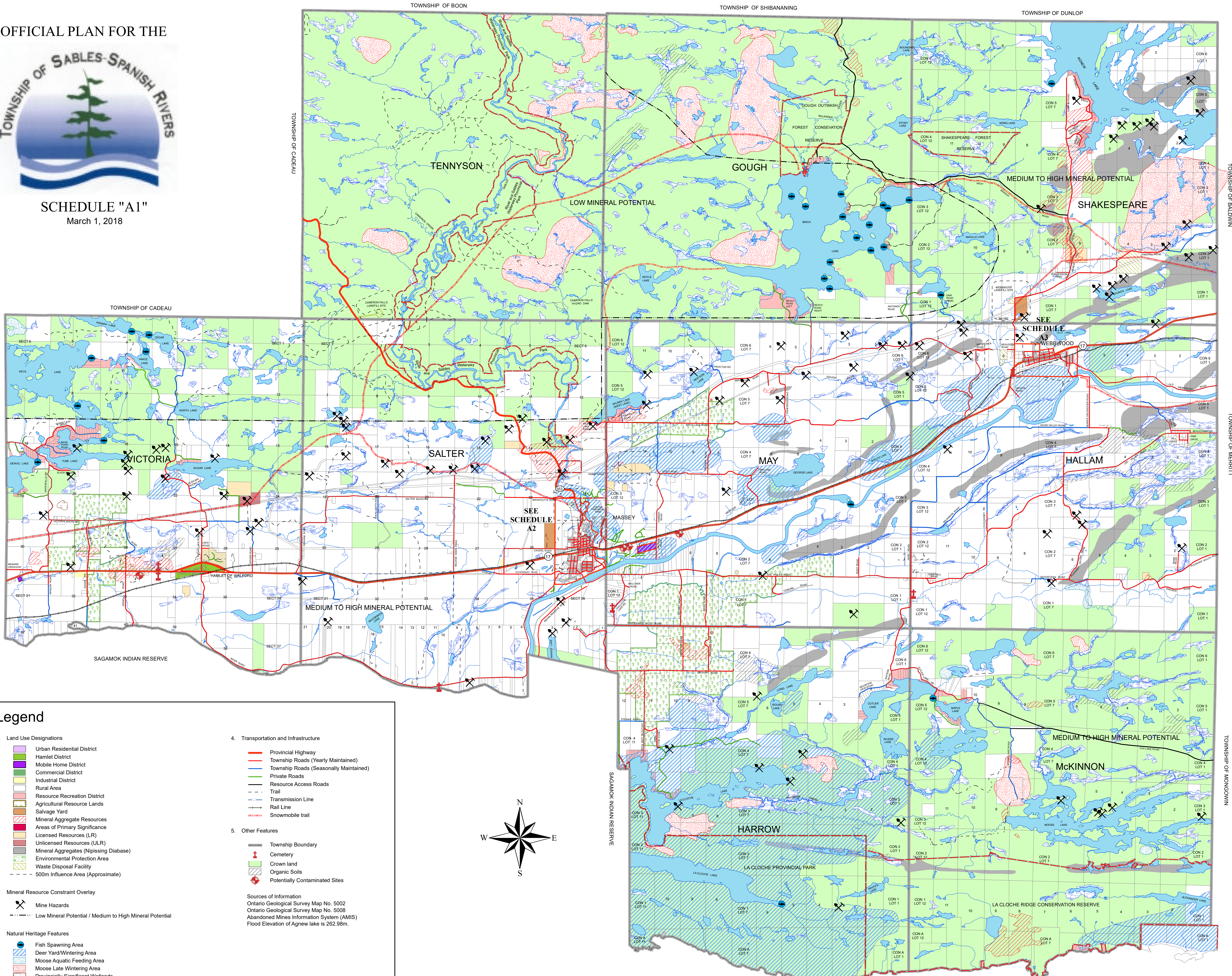


OFFICIAL PLAN FOR THE



SCHEDULE "A1"

March 1, 2018



Legend

- Land Use Designations**
 - Urban Residential District
 - Hamlet District
 - Mobile Home District
 - Commercial District
 - Industrial District
 - Rural Area
 - Resource Recreation District
 - Agricultural Resource Lands
 - Salvage Yard
 - Mineral Aggregate Resources
 - Areas of Primary Significance
 - Licensed Resources (LR)
 - Unlicensed Resources (ULR)
 - Mineral Aggregates (Nipissing Database)
 - Environmental Protection Area
 - Waste Disposal Facility
 - 500m Influence Area (Approximate)
- Mineral Resource Constraint Overlay**
 - Mine Hazards
 - Low Mineral Potential / Medium to High Mineral Potential
- Natural Heritage Features**
 - Fish Spawning Area
 - Deer Yard/Wintering Area
 - Moose Aquatic Feeding Area
 - Moose Late Wintering Area
 - Provincially Significant Wetlands
 - Provincial Park and Conservation Area
- Transportation and Infrastructure**
 - Provincial Highway
 - Township Roads (Yearly Maintained)
 - Township Roads (Seasonally Maintained)
 - Private Roads
 - Resource Access Roads
 - Trail
 - Transmission Line
 - Rail Line
 - Snowmobile trail
- Other Features**
 - Township Boundary
 - Cemetery
 - Crown land
 - Organic Soils
 - Potentially Contaminated Sites

Sources of Information
 Ontario Geological Survey Map No. 5002
 Ontario Geological Survey Map No. 5008
 Abandoned Mines Information System (AMIS)
 Flood Elevation of Agnew lake is 262.98m.

