

58-c-195676

REGISTERED UNDER THE LAND TITLES ACT		RECEIVED AND DEPOSITED	
DATE <b>Nov 23, 2017</b>	DATE <b>November 21, 2017</b>	BY <b>Doug Jordis</b> PROPRIETARY FOR THE LAND TITLES DIVISION OF THUNDER BAY	
PARTS SCHEDULE			
PART	MATERIAL CLAIM	PN	AREA
1			10 805 ha
2	PART OF TB 3813	PART OF 62505-0080	0 218 ha
3			2 882 ha
4			0 182 ha
5			11 188 ha
6	PART OF TB 3831	PART OF 62505-0081	0 343 ha
7			1 733 ha
8			2 153 ha

**PLAN OF SURVEY OF  
PART OF MINING CLAIMS  
TB 3813 AND TB 3831  
UNSURVEYED TERRITORY  
DISTRICT OF THUNDER BAY**

SCALE - 1:1000  
0 25 50m

**NOTES**  
BEARINGS ARE GRID, DERIVED FROM OBSERVED REFERENCE POINTS A AND B, HAVING A BEARING OF 107°51'30"E BY REAL TIME DYNAMIC (RTK) OBSERVATIONS, UTM ZONE 15, HIGGS (CSRS) (1997) 0. FOR BEARING COMPARISONS, A ROTATION OF 1°34'30" COUNTER-CLOCKWISE WAS APPLIED TO BEARINGS ON P1, P2 AND P3. DISTANCES ARE GROUND AND CAN BE CONVERTED TO GRID BY MULTIPLYING BY THE COMBINED SCALE FACTOR OF 0.99998128.

**COORDINATES BELOW ARE DERIVED FROM GPS OBSERVATIONS MADE AT THE ABOVE POINT POSITIONS AND ARE REFERRED TO UTM ZONE 15, HIGGS (CSRS) (1997)**

POINT ID	NORTHING	EASTING
A	551847.37	658322.18
B	551872.87	658320.15
C	551906.23	658320.48

COORDINATES CANNOT, IN THEMSELVES, BE USED TO RE-ESTABLISH CORNERS OR BOUNDARIES SHOWN ON THIS PLAN.

- LEGEND**
- DENOTES A PLANTED SURVEY MONUMENT
  - DENOTES A FOUND SURVEY MONUMENT
  - S/B DENOTES STAKES FROM BURN
  - S/B DENOTES SLOTTED IRON BAR
  - S/B DENOTES POINT BARRIAGE IRON BAR
  - S/B DENOTES ROCK FLUG
  - F/P DENOTES IRON POST
  - M/P DENOTES WOOD POST
  - W/P DENOTES METEORITE
  - W/T DENOTES WOOD TIE
  - 407 DENOTES E.P.A. PHENOLIC O.I.S.
  - E.P. DENOTES E.P.A. GEOMATICS I.C.
  - T.B. DENOTES THE SURVEYORS INC.
  - T.B. DENOTES AMENDED PLAN OF MINING CLAIM TB 3831
  - P1 DENOTES PHENOLIC O.I.S. DATED AUGUST 18, 1926
  - P2 DENOTES PLAN OF MINING CLAIM TB 3813 BY E.P.A. PHENOLIC O.I.S. DATED AUGUST 18, 1921
  - P3 DENOTES PLAN 55R-1151
  - P4 DENOTES REGISTERED PLAN 55M-638
  - P5 DENOTES PLAN 55R-14282 (REGISTERED AS PA143)
  - P6 DENOTES PLAN NO. 2
  - PN DENOTES PROPERTY IDENTIFICATION NUMBER
  - SRO DENOTES SURFACE RIGHTS ONLY

**METRIC**  
DISTANCES AND COORDINATES SHOWN ON THIS PLAN ARE IN METRES AND CAN BE CONVERTED TO FEET BY DIVIDING BY 0.3048  
AREAS SHOWN ON THIS PLAN ARE IN HECTARES AND CAN BE CONVERTED TO ACRES BY MULTIPLYING BY 2.471

**SURVEYOR'S CERTIFICATE**  
I CERTIFY THAT:  
1. THIS SURVEY AND PLAN ARE CORRECT AND IN ACCORDANCE WITH THE SURVEY ACT AND THE SURVEYORS ACT AND THE LAND TITLES ACT AND THE REGULATIONS MADE UNDER THEM.  
2. THE SURVEY WAS COMPLETED ON THE 17th DAY OF OCTOBER, 2017.

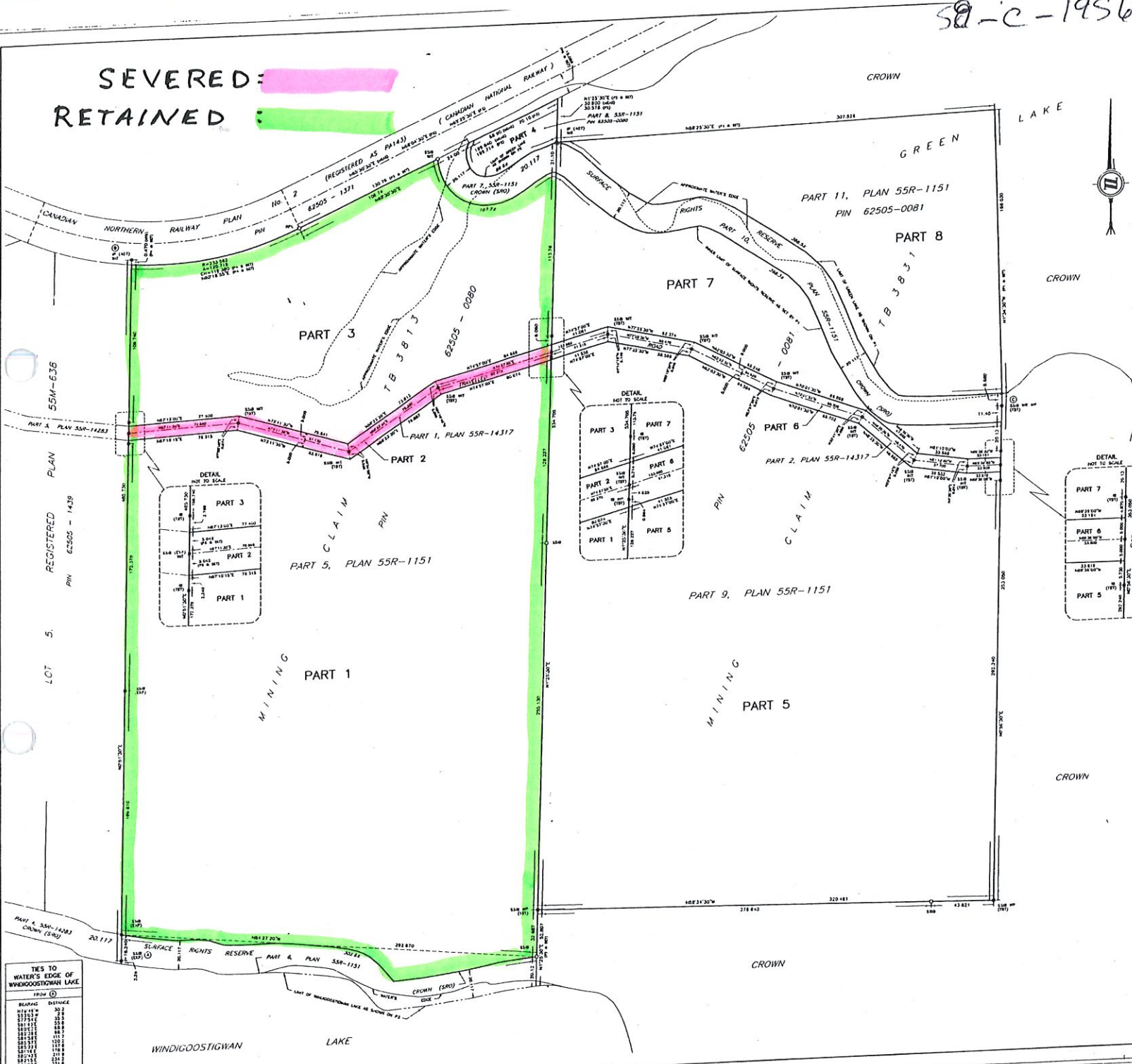
**Nov 23, 2017**  
DATE  
*Doug Jordis*  
DOUG JORDIS  
ON-TASK LAND SURVEYOR

**TBT ENGINEERING**  
CONSULTING GROUP  
TBT SURVEYORS INC. - A WHOLLY OWNED SUBSIDIARY OF TBT ENGINEERING LIMITED

56 KING STREET, DRUIDEN, ON P8H 1B5  
T: (807) 223-5974 F: (807) 624-5161 e: info@tbt.ca

DRAWN BY: B.F. CHECKED BY: D.J. DATE: 22/11/17  
ENG. REG. NO.: 5279 (P. 1987-1991) REG. NO.: 260 (P. 1992-1995) REG. NO.: 260 (P. 1996-1999) REG. NO.: 260 (P. 2000-2003) REG. NO.: 260 (P. 2004-2007) REG. NO.: 260 (P. 2008-2011) REG. NO.: 260 (P. 2012-2015) REG. NO.: 260 (P. 2016-2019)

**SEVERED:**  
**RETAINED:**



**TIES TO WATER'S EDGE OF WINDIGOOSTIGWAN LAKE**

FROM	DISTANCE
10130.75	3.0
10130.75	1.0
10130.75	1.5
10130.75	2.0
10130.75	2.5
10130.75	3.0
10130.75	3.5
10130.75	4.0
10130.75	4.5
10130.75	5.0
10130.75	5.5
10130.75	6.0
10130.75	6.5
10130.75	7.0
10130.75	7.5
10130.75	8.0
10130.75	8.5
10130.75	9.0
10130.75	9.5
10130.75	10.0
10130.75	10.5
10130.75	11.0
10130.75	11.5
10130.75	12.0
10130.75	12.5
10130.75	13.0
10130.75	13.5
10130.75	14.0
10130.75	14.5
10130.75	15.0
10130.75	15.5
10130.75	16.0
10130.75	16.5
10130.75	17.0
10130.75	17.5
10130.75	18.0
10130.75	18.5
10130.75	19.0
10130.75	19.5
10130.75	20.0
10130.75	20.5
10130.75	21.0
10130.75	21.5
10130.75	22.0
10130.75	22.5
10130.75	23.0
10130.75	23.5
10130.75	24.0
10130.75	24.5
10130.75	25.0
10130.75	25.5
10130.75	26.0
10130.75	26.5
10130.75	27.0
10130.75	27.5
10130.75	28.0
10130.75	28.5
10130.75	29.0
10130.75	29.5
10130.75	30.0
10130.75	30.5
10130.75	31.0
10130.75	31.5
10130.75	32.0
10130.75	32.5
10130.75	33.0
10130.75	33.5
10130.75	34.0
10130.75	34.5
10130.75	35.0
10130.75	35.5
10130.75	36.0
10130.75	36.5
10130.75	37.0
10130.75	37.5
10130.75	38.0
10130.75	38.5
10130.75	39.0
10130.75	39.5
10130.75	40.0
10130.75	40.5
10130.75	41.0
10130.75	41.5
10130.75	42.0
10130.75	42.5
10130.75	43.0
10130.75	43.5
10130.75	44.0
10130.75	44.5
10130.75	45.0
10130.75	45.5
10130.75	46.0
10130.75	46.5
10130.75	47.0
10130.75	47.5
10130.75	48.0
10130.75	48.5
10130.75	49.0
10130.75	49.5
10130.75	50.0
10130.75	50.5
10130.75	51.0
10130.75	51.5
10130.75	52.0
10130.75	52.5
10130.75	53.0
10130.75	53.5
10130.75	54.0
10130.75	54.5
10130.75	55.0
10130.75	55.5
10130.75	56.0
10130.75	56.5
10130.75	57.0
10130.75	57.5
10130.75	58.0
10130.75	58.5
10130.75	59.0
10130.75	59.5
10130.75	60.0