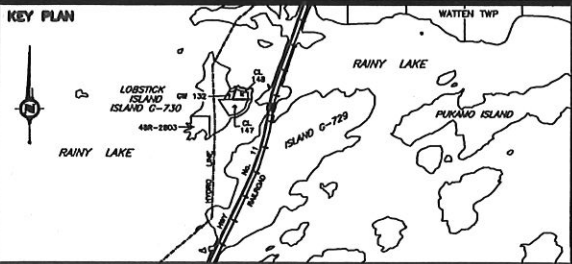
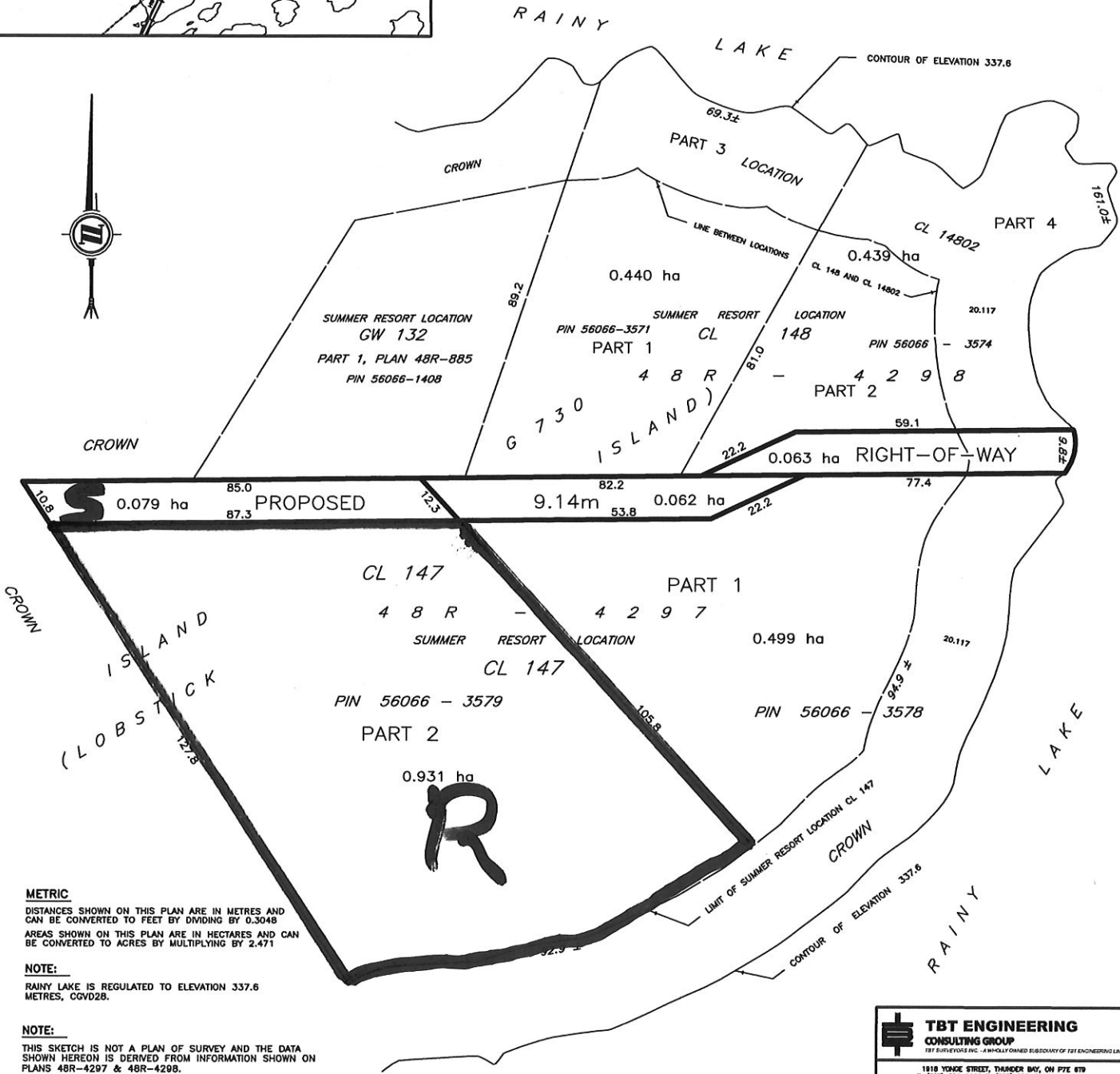


59-C-185458



SKETCH FOR SEVERANCE APPLICATION OF  
**PROPOSED 9.14m RIGHT-OF-WAY**  
**LOBSTICK ISLAND**  
**UNSURVEYED TERRITORY**  
**DISTRICT OF RAINY RIVER**

SCALE - 1:1250  
 5m 0 10 20m



**METRIC**

DISTANCES SHOWN ON THIS PLAN ARE IN METRES AND CAN BE CONVERTED TO FEET BY DIVIDING BY 0.3048  
 AREAS SHOWN ON THIS PLAN ARE IN HECTARES AND CAN BE CONVERTED TO ACRES BY MULTIPLYING BY 2.471

**NOTE:**

RAINY LAKE IS REGULATED TO ELEVATION 337.6 METRES, CGVD28.

**NOTE:**

THIS SKETCH IS NOT A PLAN OF SURVEY AND THE DATA SHOWN HEREON IS DERIVED FROM INFORMATION SHOWN ON PLANS 48R-4297 & 48R-4298.

**TBT ENGINEERING CONSULTING GROUP**  
 TBT SURVEYS INC. - A WHOLLY OWNED SUBSIDIARY OF TBT ENGINEERING LIMITED  
 1818 YONGE STREET, THUNDER BAY, ON P7E 6T9  
 T: (807) 624-5180 F: (807) 624-5181 www.tbt.ca  
 DRAWN BY: PD CHECKED BY: PSH DATED: 2018/11/28  
 DWG No.: TBT/2018/11/28/18-000-00000-00000-00000-00000

