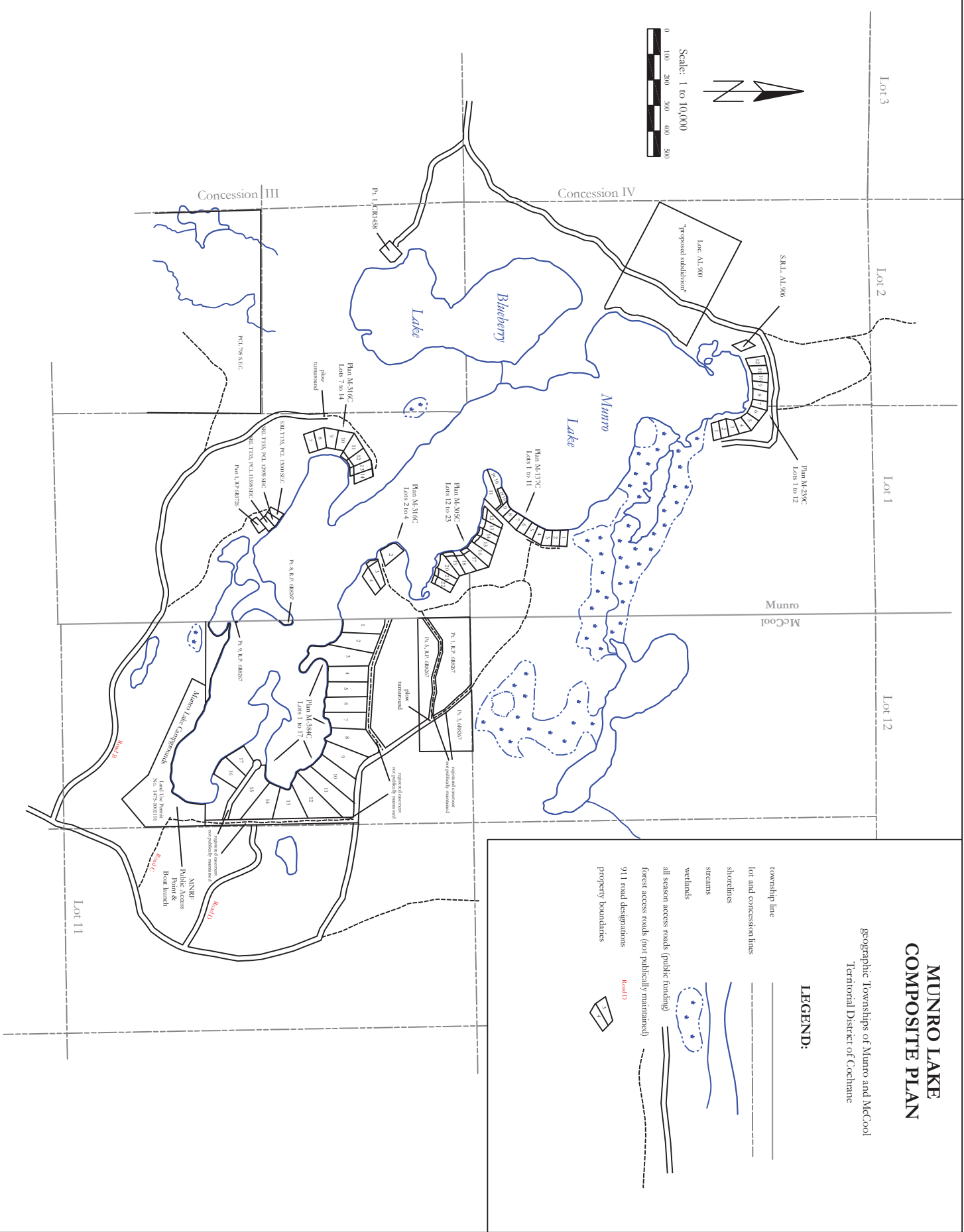
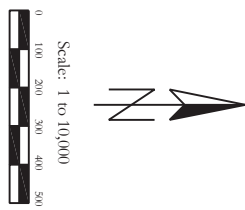


# MUNRO LAKE COMPOSITE PLAN

geographic Townships of Munro and McCool  
Territorial District of Cochrane

## LEGEND:

- township line
- lot and concession lines
- shorelines
- streams
- wetlands
- all season access roads (public funding)
- forest access roads (not publicly maintained)
- 911 road designations
- property boundaries



# Draft Plan of Subdivision

Munro Lake Recreational Cottage Lots  
 Location AL900, Part 1 of Plan 6R-2498  
 being Part of Lot 2, Concession IV  
 geographic Township of Munro  
 Territorial District of Cochrane  
 37.2 acres (15.05 ha) ±

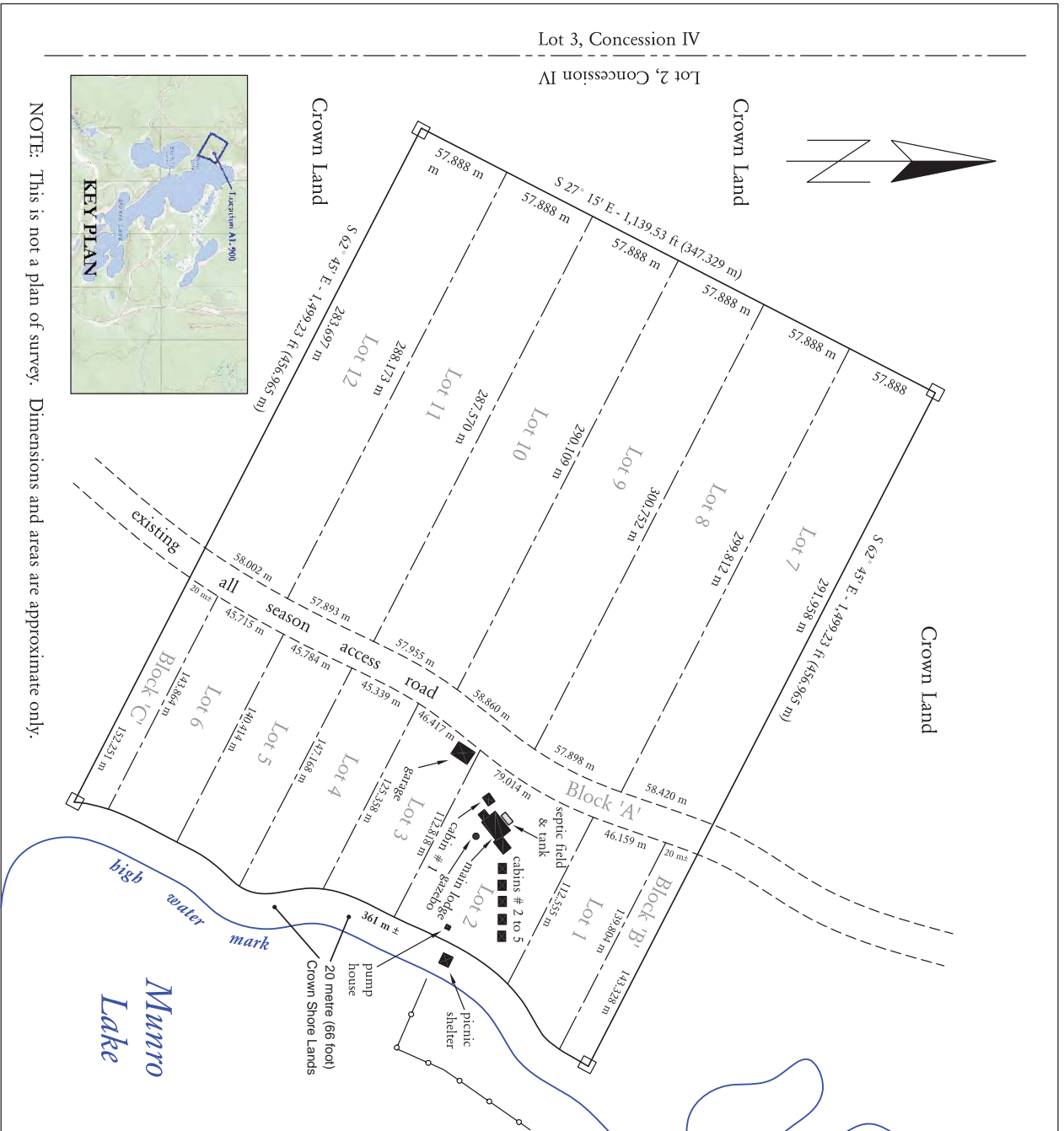
## Legend

- surveyed boundary lines
- survey posts (standard iron bar 1 in sq. x 4 ft long)
- 20 metre (66 foot) road right-of-way
- proposed cottage lot boundaries
- existing buildings/improvements (to scale)
- Lot and Concession Lines
- Submarine Hydro Cable

## Lots/Blocks Area Table

Location	Area [ha]	Location	Area [ha]
Lot 1	0.56	Lot 9	1.70
Lot 2	0.84	Lot 10	1.66
Lot 3	0.53	Lot 11	1.65
Lot 4	0.60	Lot 12	1.64
Lot 5	0.61	Blk "A" access road	0.70
Lot 6	0.62	Blk "B" lake access	0.27
Lot 7	1.70	Blk "C" lake access	0.24
Lot 8	1.73	<b>Total Area</b>	<b>15.05</b>

Scale: 1 to 3,000



NOTE: This is not a plan of survey. Dimensions and areas are approximate only.