

14
21

SKETCH

60-C-193577

C R O W N

C R O W N
172.95

C R O W N
292.10

47.91 47.91 50.08 48.53 45.98

Lot 1 Retained Lot 2 Lot 3 Lot 4 Lot 5

LOCATION N G - 1503

PIN 42150-1016

cabin (S1)
9.75 x 14.3

(S3)
5.5 x 6.1

S1
7.3 x 12.2
S2
3.6 x 4.8
S3
7.3 x 4.8

HAY
3:04 ac
1.23 ha

BRECHT
3:00 ac
1.22 ha

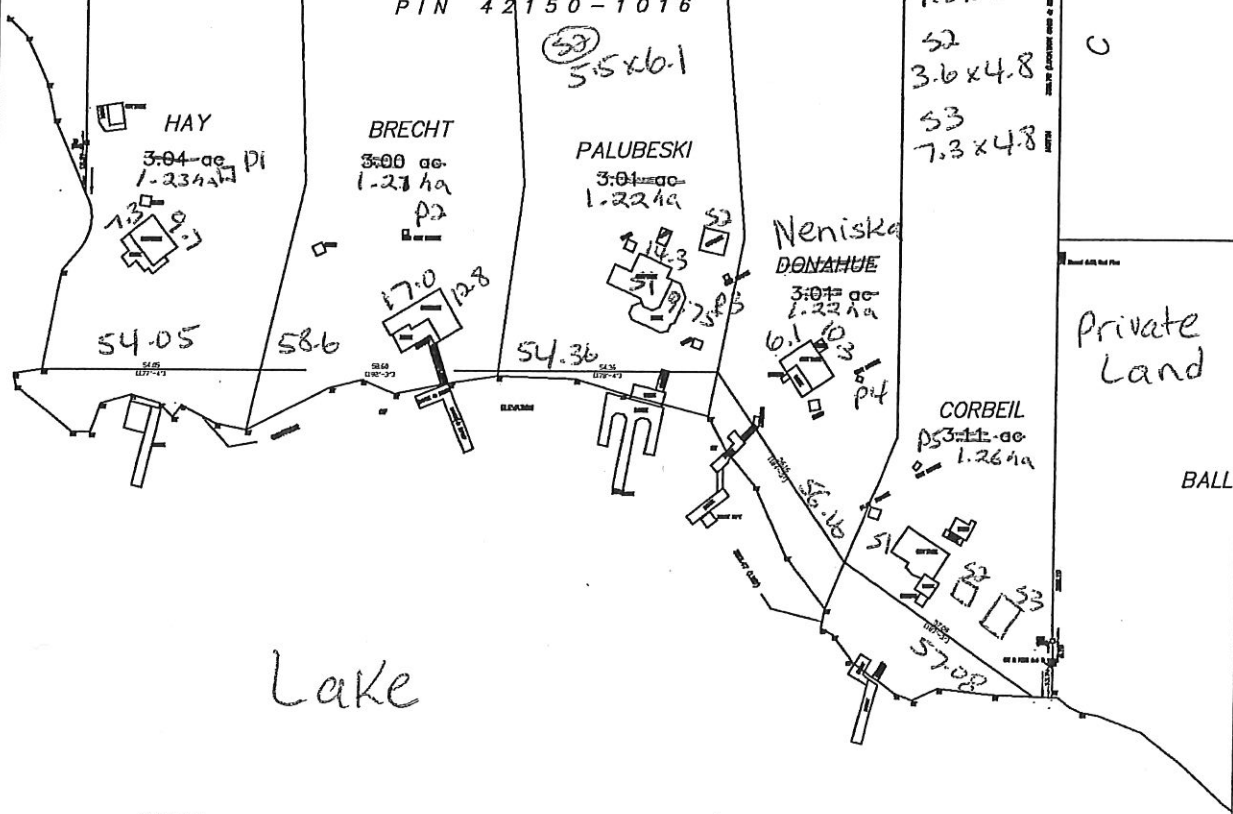
PALUBESKI
3:04 ac
1.22 ha

Neniska
DONAHUE
3:04 ac
1.22 ha

CORBEIL
P53-11-00
1.26 ha

Private Land

BALL



PLAN OF
LOCATION G - 1503
HAY ISLAND
LAKE OF THE WOODS
DISTRICT OF KENORA
LATITUDE 49° 38' N LONGITUDE 94° 25' W



SCALE - 1:500
0 10 20 METERS

PROPOSED SUBDIVISION - G-1503

DISTANCES SHOWN ON THIS PLAN ARE
IN METERS AND CAN BE CONVERTED
TO FEET BY DIVIDING BY 0.3048

- LEGEND:
- : Dashed Round Survey Measurements
 - : Dashed Squared Survey Measurements
 - : Dashed Standard Iron Bar
 - : Dashed Pen Bar